



... developing high purity flake for new technologies

AGM Presentation

28 November 2013



LAMBOO
RESOURCES

... developing high purity flake for new technologies

Investment in Lamboo Resources Limited ("Lamboo") is subject to investment risk, including possible loss of income and capital invested. Neither Lamboo, nor any other member company of the Lamboo Group, nor any officer or employee guarantees any particular rate of return or performance, nor do they guarantee the repayment of capital.

The presentation may contain forward-looking statements regarding the potential of the Company's revenues, projects, interests and the development potential of the Company's business. Any statement describing a goal, expectation, intention or belief of the Company is a forward-looking statement and should be considered an at-risk statement. Given these risks, readers are cautioned not to rely on forward-looking statements. Actual results could differ materially from those anticipated in these forward-looking statements due to many important factors, risks and uncertainties including, without limitation, risk associated with product sales, development and manufacture, risks inherent in the business, future capital needs, general economic uncertainty and other risks detailed from time to time in the Company's announcements to the ASX.

Competent Persons Statements

Information in this "Company Presentation" relating to Exploration Results and geological data at the McIntosh Project has been compiled by the Technical Director of Lamboo Resources Ltd, Dr Craig S. Rugless who is a Member of the Australasian Institute of Mining and Metallurgy and a Member of the Australian Institute Geoscientists. He has sufficient experience that is relevant to the types of deposits being explored for and qualifies as a Competent Person as defined by the JORC Code 2012. He consents to the inclusion of this information in the form and context in which it appears in this report.

The information relating to the Mineral Resources at the McIntosh Project is extracted from the ASX Announcement as follows:

- ASX Announcement titled Quarterly Activities Report dated 31 July 2013

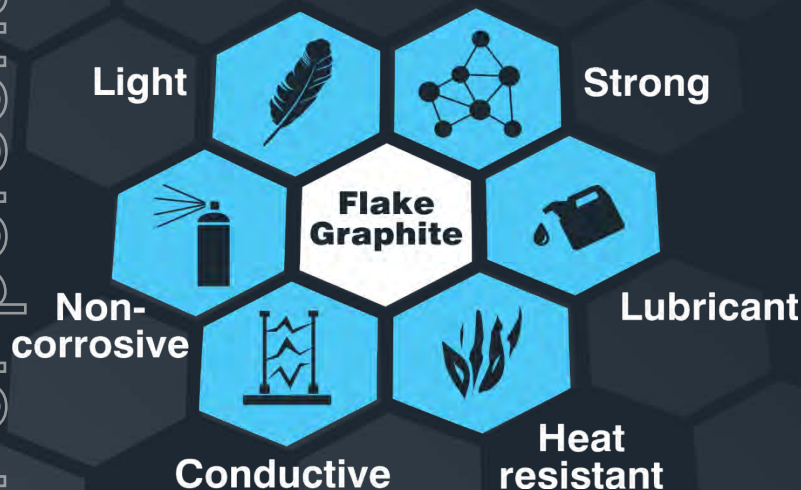
The information relating to Inferred Mineral Resources and Exploration Data associated with the Company's projects in South Korea is extracted from the ASX Announcements as follows:

- ASX announcement titled Two Additional Mining Rights Granted over the South Korean - Geumam Graphite Project dated 13 June 2013 and
- ASX Announcement titled Quarterly Activities Report dated 31 July 2013

Both reports are available to view on the Lamboo Resources website www.lambooresources.com. The reports were issued in accordance with the 2012 Edition of the JORC Australasian Code for Reporting of Exploration Results, Mineral Resources and Ore Reserves. The company confirms that it is not aware of any new information or data that materially affects the information included in the original market announcement and, in the case of estimates of Mineral Resources or Ore Reserves, that all material assumptions and technical parameters underpinning the estimates in the relevant market announcement continue to apply and have not materially changed. The company confirms that the form and context in which the Competent Person's findings are presented have not been materially modified from the original market announcement.

GRAPHITE FACTS

FLAKE GRAPHITE PROPERTIES



WORLDWIDE DEMAND TO
INCREASE
80% IN SEVEN
YEARS

New **Green Technologies**
driving demand



Lithium Ion Batteries



Pebble Bed
Nuclear Reactors



Graphene



Supercapacitors

GRAPHICS FACTS

Types of Graphite



LUMP



AMORPHOUS



FLAKE

1. 

Low purity flake graphite **cannot be used** in the production of most **new technologies**

2.



HIGH PURITY
CRYSTAL
FLAKE
GRAPHITE

HIGH PURITY FLAKE GRAPHITE IS IN
VERY **LIMITED** SUPPLY

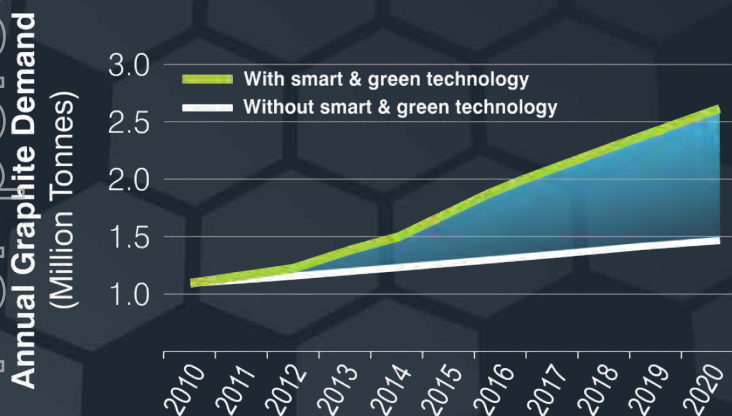
LAMBOO'S GRAPHITE RESERVES ARE
HIGH PURITY FLAKE

ONLY HIGH PURITY FLAKE
CAN BE USED IN THE PRODUCTION
OF THESE **NEW TECHNOLOGIES**

For personal use only

GRAPHITE DEMAND A \$12 BILLION MARKET

GLOBAL GRAPHITE DEMAND



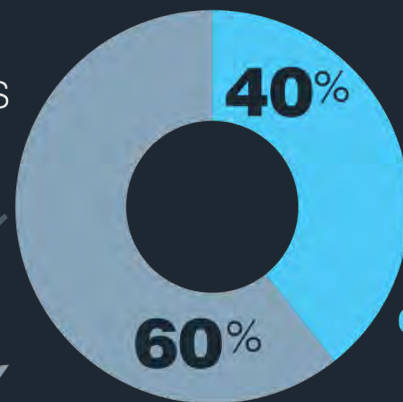
DEMAND FOR
FLAKE GRAPHITE
TO INCREASE BY

11%
pa

DRIVEN BY
SMART & GREEN
TECHNOLOGY

SUPPLY

AMORPHOUS
GRAPHITE



FLAKE
GRAPHITE

CHINA CURRENTLY
PRODUCES ABOUT
90% OF THE
WORLD'S
GRAPHITE

- Low-carbon amorphous
- Diminishing flake reserves
- Declining production

\$

LOWEST SUPPLY
HIGHEST PRICE

**LAMBOO
RESOURCES**

&

TECHNOLOGY

LAMBOO'S AIM IS TO ACHIEVE
LONG TERM FLAKE GRAPHITE PRODUCTION



Lithium Ion Batteries



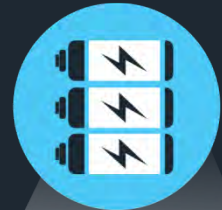
**Pebble Bed
Nuclear Reactors**



Graphene

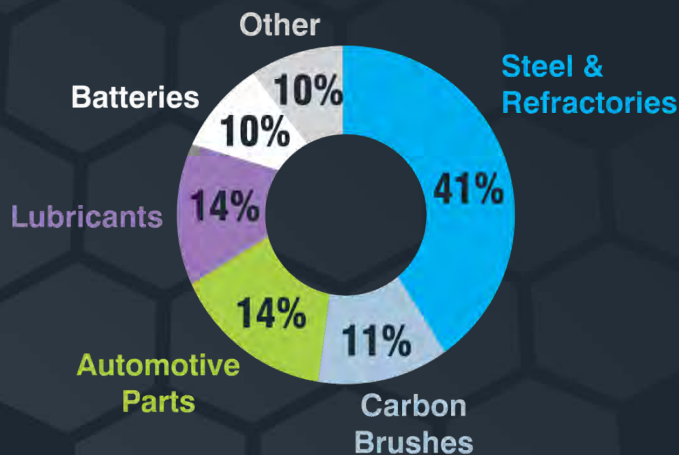


Supercapacitors



GRAPHITE USES

CURRENT GRAPHITE USAGE



**SYNTHETIC
FLAKE
GRAPHITE**

VS

**NATURAL
FLAKE
GRAPHITE**

COST

**\$20,000 -
\$160,000/t**

**\$1,600 -
\$5,000/t**

CONDUCTIVITY

**LESS
CONDUCTIVE**

**MORE
CONDUCTIVE**

SMART & GREEN TECHNOLOGY USE

Lithium Ion Batteries



10-20 TIMES MORE
GRAPHITE THAN
LITHIUM USED



Pebble Bed Nuclear Reactors



A **1 GW** PEBBLE BED REACTOR **NEEDS**
3000 tonnes OF FLAKE GRAPHITE TO START UP
1000 tonnes OF FLAKE GRAPHITE TO OPERATE PER YEAR

Graphene



75% OF FLAKE GRAPHITE
WASTED IN CONVERSION
PROCESS

Supercapacitor Fuel Cells



80 kg OF FLAKE GRAPHITE USED
THE AVERAGE FUEL CELL
VEHICLE

LOW COST MODEL

Australia Operations

EXCELLENT **LOW COST** INFRASTRUCTURE



TRUCK TO
DEEP WATER
PORT

2.5 hours



STRONG DEMAND



RIGHT PRODUCT



WELL POSITIONED



LOW COST PRODUCER



\$\$\$\$\$\$

South Korea Operations

EXCELLENT **LOW COST** INFRASTRUCTURE



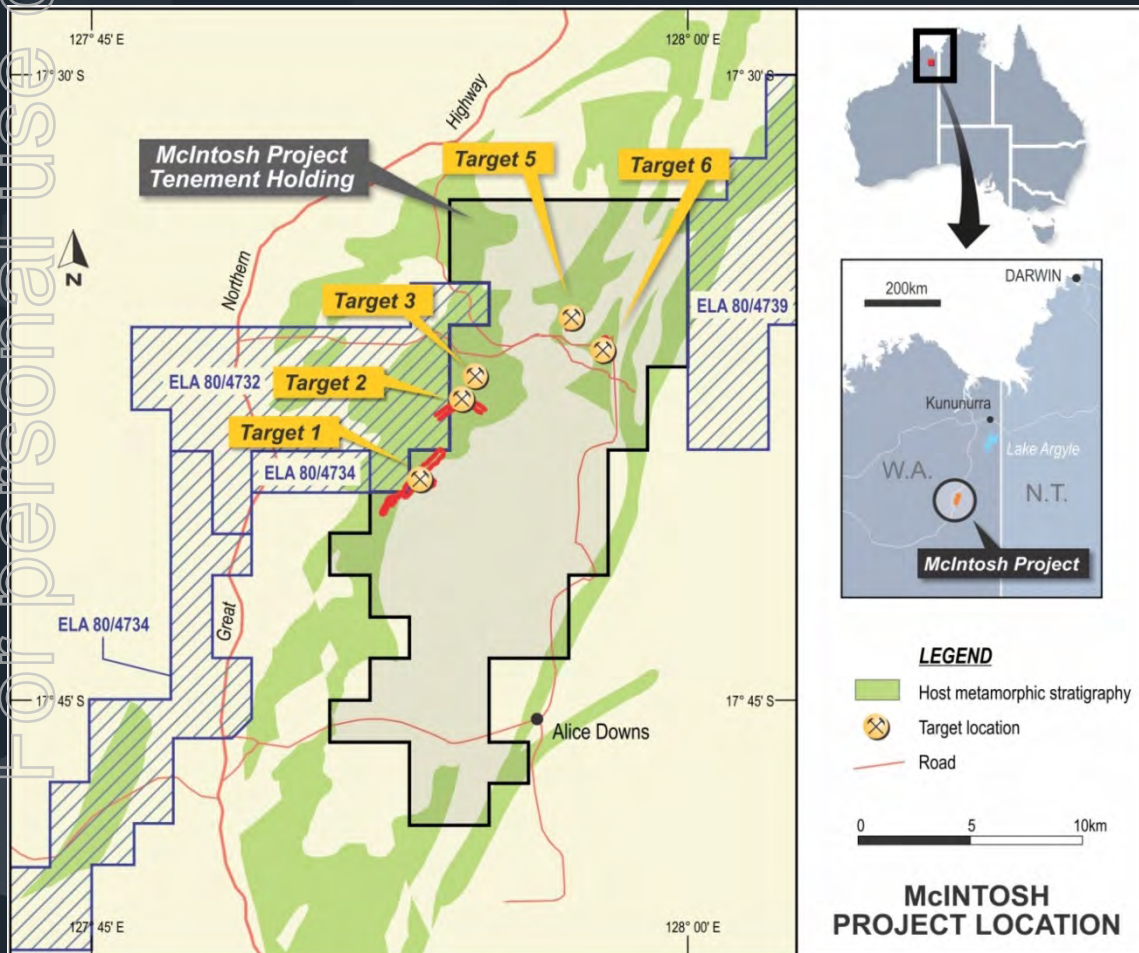
TRUCK TO
WORLD'S
LARGEST PORT

9 km

CLOSE PROXIMITY TO
BIGGEST BUYERS
IN THE WORLD



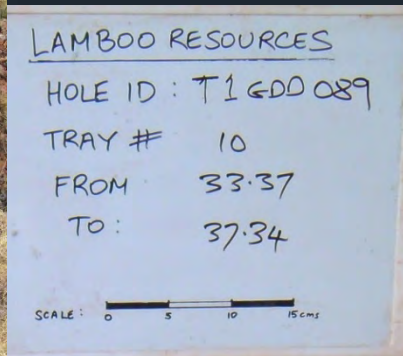
McIntosh Graphite



- McIntosh graphite project showing the 5 main targets.
- Drilling and mapping have lead to a preliminary JORC resource at Target 1 with a 2000m extension, plus upside in other targets
- Excellent project logistics – haul road access to Highway One (Great Northern Highway) and the port of Wyndham.

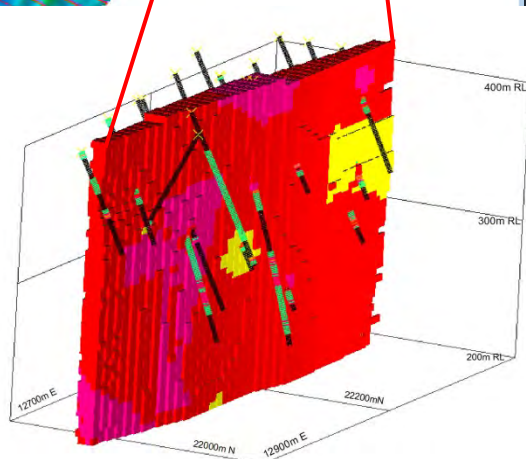
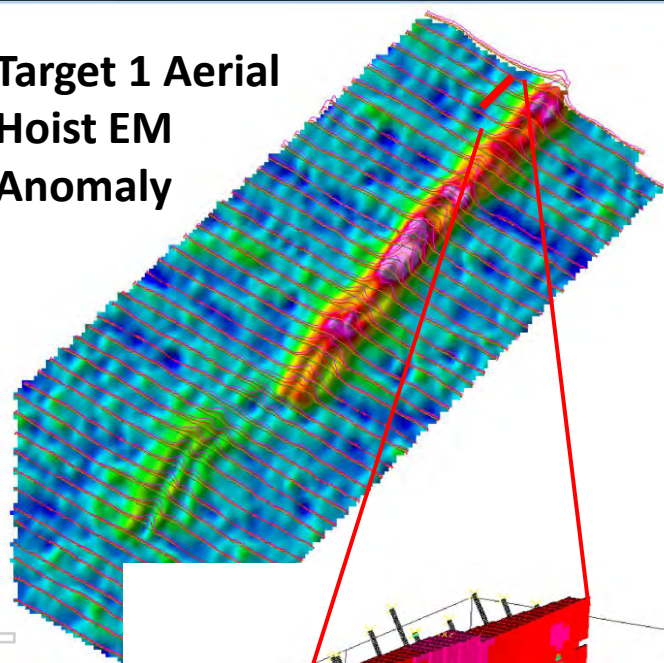
TARGET 1 - Favourable Location

For personal use only



TARGET 1 - Resource

**Target 1 Aerial
Hoist EM
Anomaly**



Cell Grades TC%

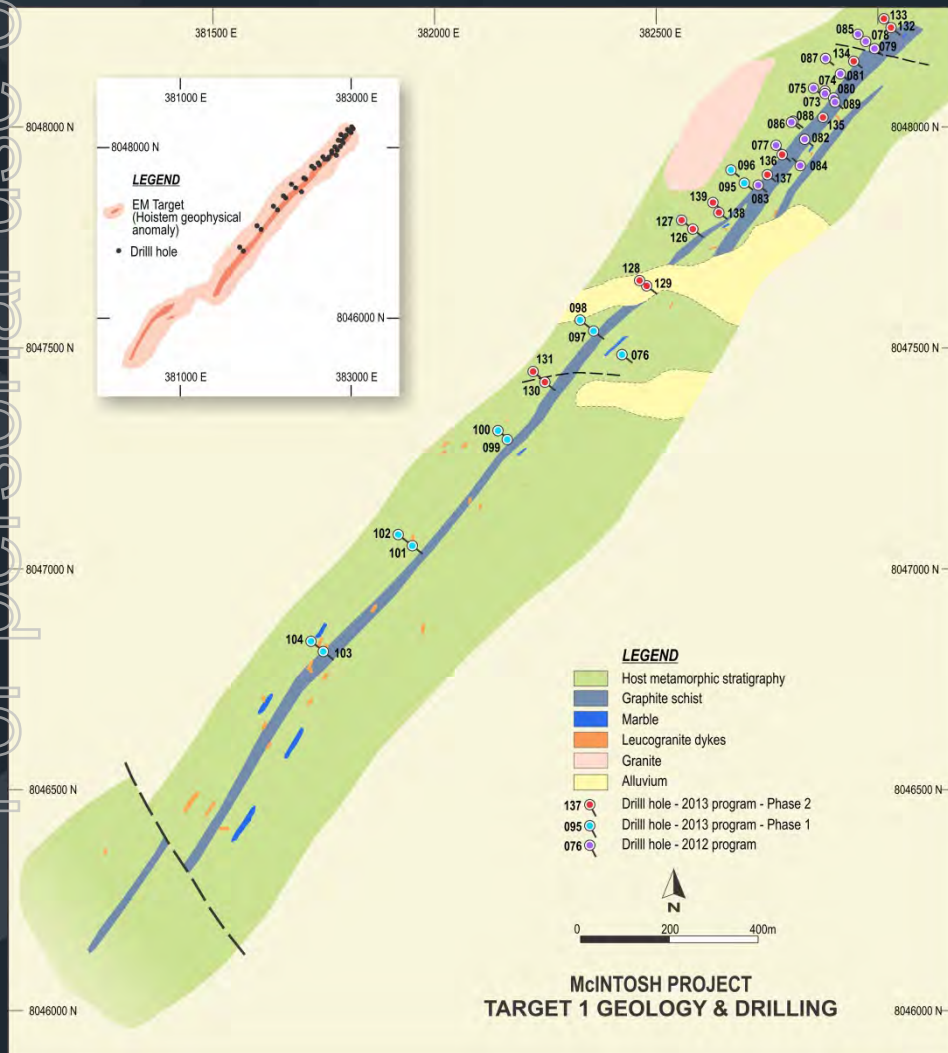
- 6 - 10% TC
- 4 - 6% TC
- 2 - 4% TC

TARGET 1 - ESTIMATED INDICATED AND INFERRED JORC RESOURCE –

**5,323,000 tonnes grading 4.91 TGC%
(5.06 TC%) over a strike length of 400 m
and depth of 200 m RL for 262,000
tonnes of contained graphite**

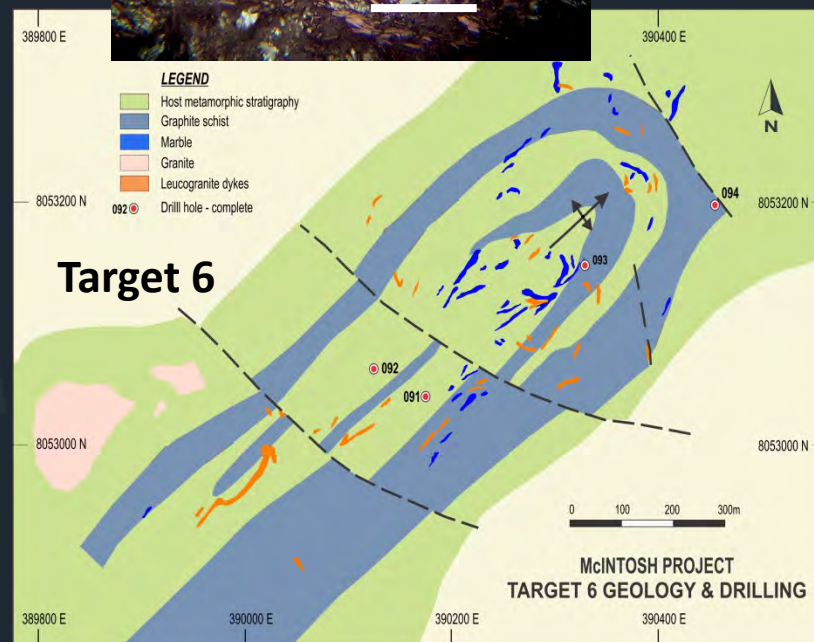
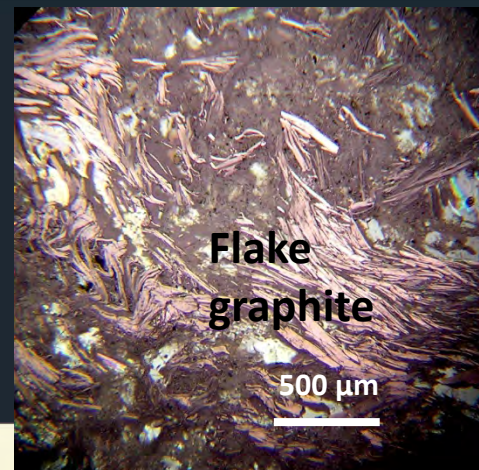
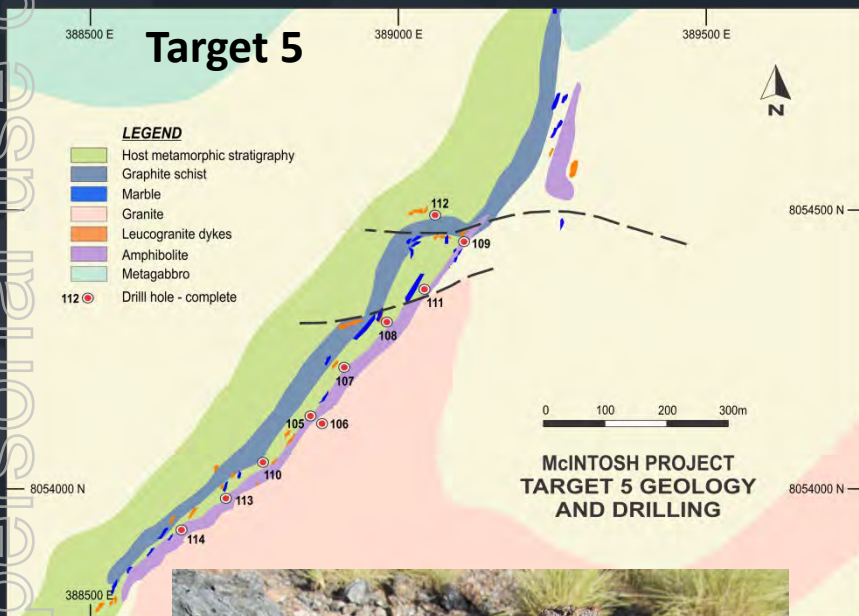
Project Area	Ore Type	Resource Classification	Tonnes	Graphite (%TGC)	Contained graphite (tonnes)
Target 1 Graphite	Primary	Indicated	3,615,000	4.89	177,800
	Oxide	Inferred	350,000	5.03	17,600
	Primary	Inferred	1,359,000	4.93	67,000
	Oxide + primary	Total Resource	5,323,000	4.91	262,400

TARGET 1 - Potential

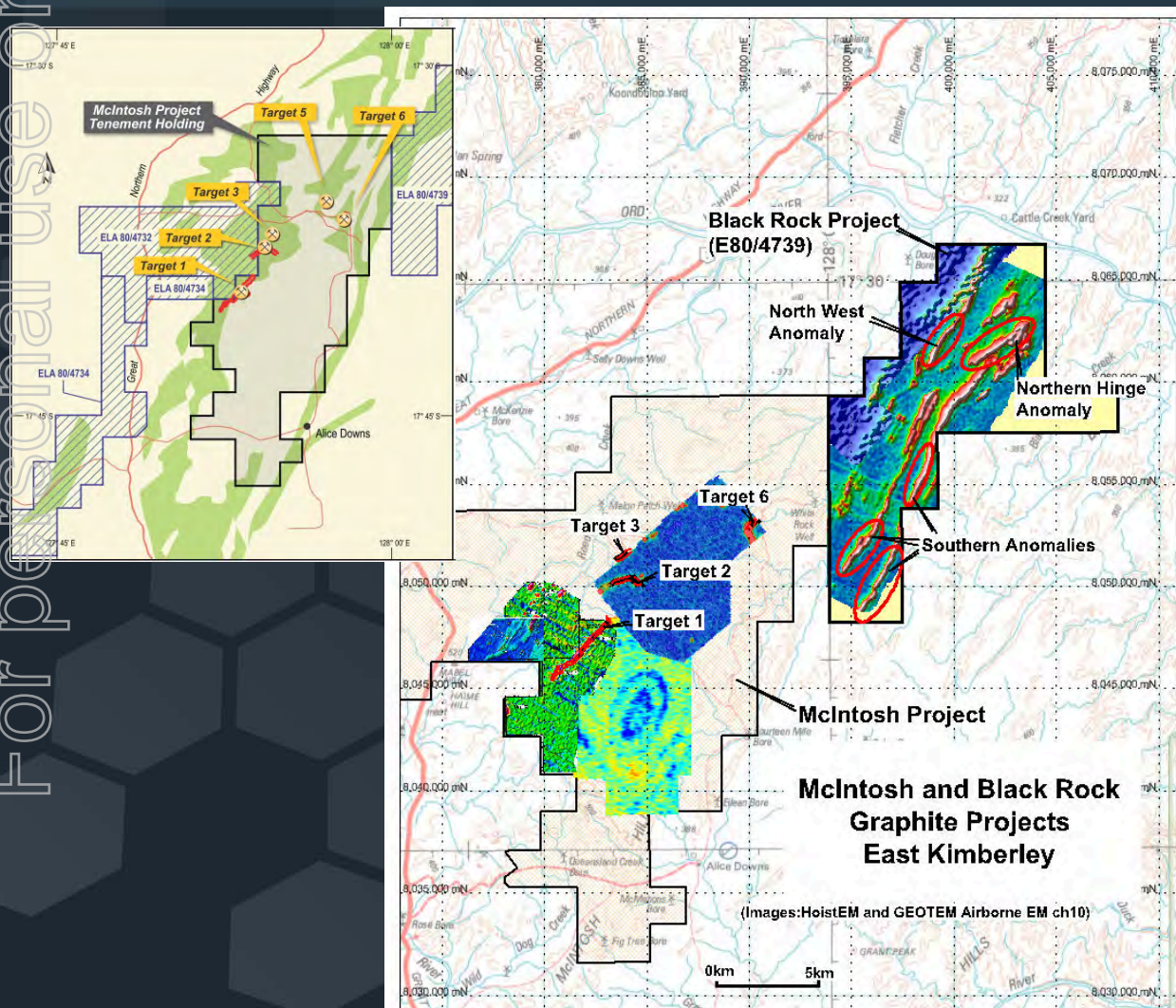


Latest drilling confirms extension of flake graphite horizon by 2000m with potential to add significantly to Maiden JORC resource

TARGETS 5 & 6 - Potential

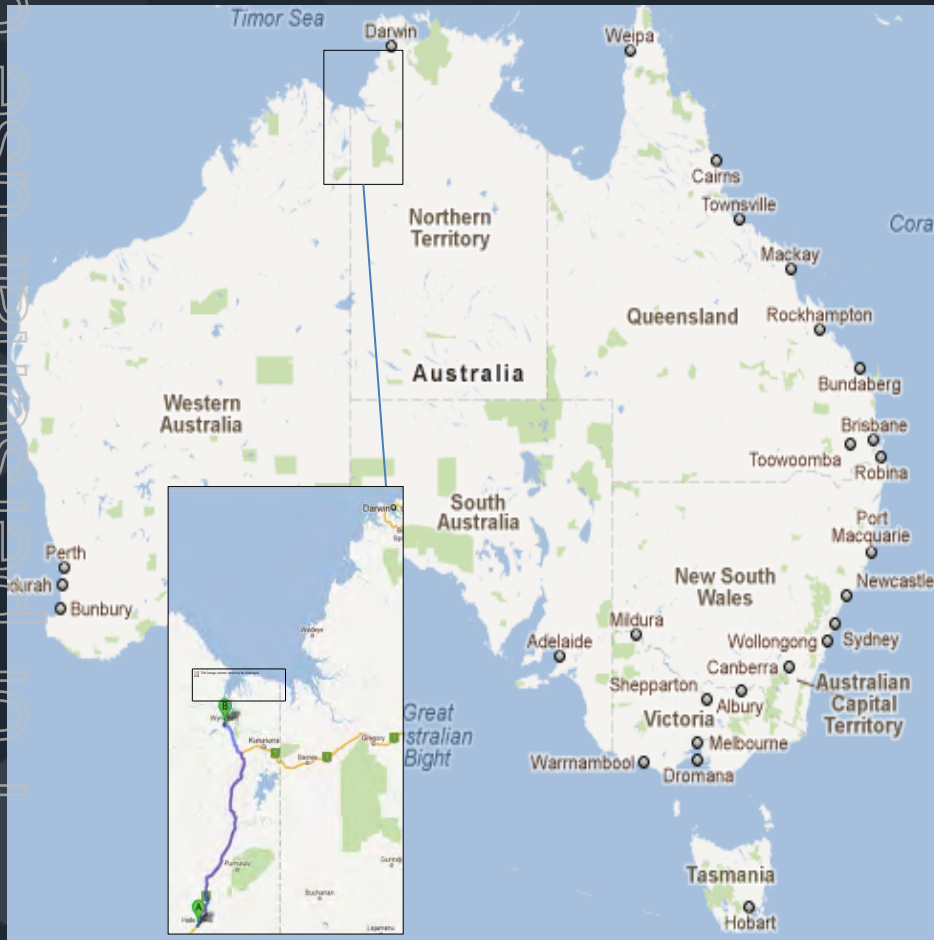


McINTOSH – So much potential



- Additional EM anomalies at Black Rock project indicate an additional 15 km of strong EM anomalies requiring exploration.
- Total strike length potential for flake graphite now in excess of 25 km.

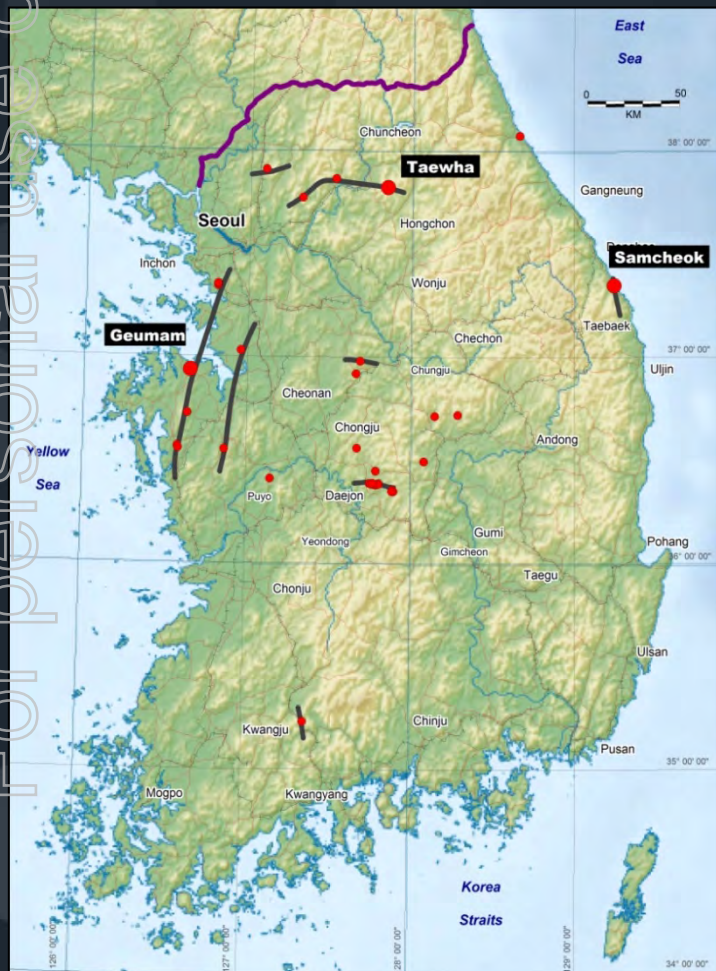
McINTOSH - Infrastructure



- Port Wyndham is the only deep water port between Broome and Darwin and lies 280km from the McIntosh Project via the Great Northern Highway and has available capacity.



SOUTH KOREA - Projects



Geumam

- Inferred JORC-code compliant resource of 200,000 tonnes @ 10% Cg.
- Diamond drilling has commenced - no assays available.

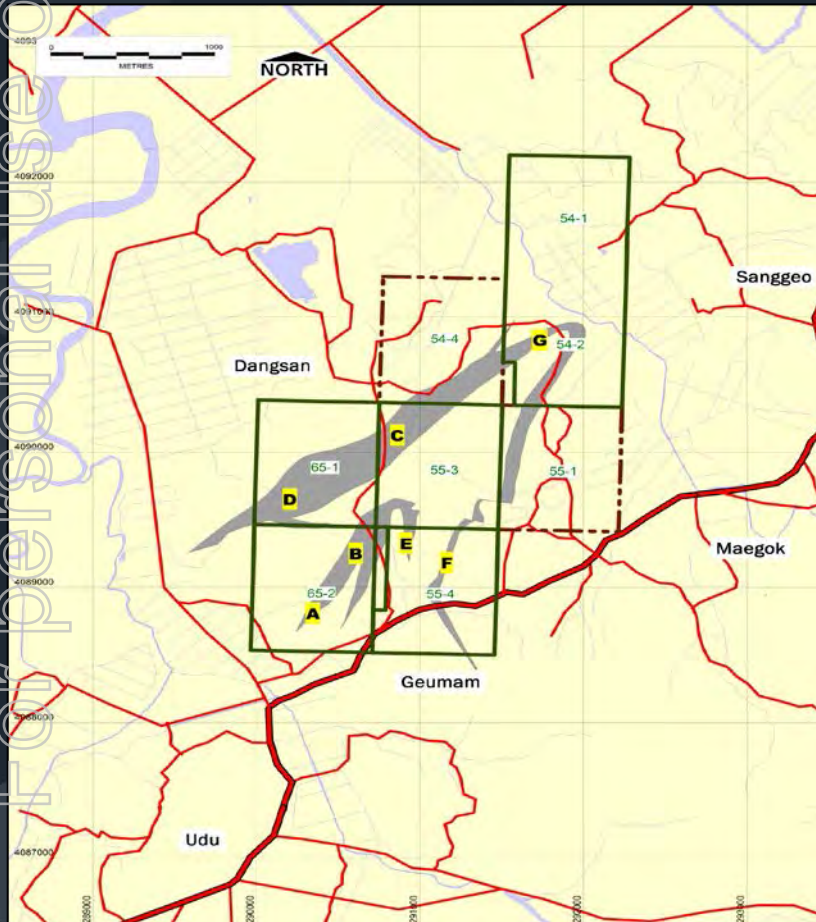
Taewha

- Inferred JORC-code compliant resource of 170,000 tonnes @ 6.8% Cg.

Samchoek

- Inferred JORC-code compliant resource of 200,000 tonnes @ 4.8% Cg.

SOUTH KOREA - Projects



Geumam Project offers:

- Close proximity to the largest markets for graphite in North Asia (China, Japan and South Korea).
- South Korea has a significant geopolitical advantage in the North Asian region, where it acts as a “middleman” to overcome cultural and historical differences.
- Minimal transportation freight costs.
- A premium is placed on new mines in stable, safe countries with low sovereign risk for investment.
- Demand for flake graphite is expected to grow in North Asia at a higher rate than any other region over the next 5 years.
- *Samsung* is funding leading research into graphene and commercialising its applications.

LAMBOO GRAPHITE SUMMARY

- ❑ Maiden JORC Resource for Target 1 flake graphite WA project at McIntosh. Further drilling confirms strike extension to Target 1 with potential for significant resource upgrade. Targets 5 and 6 contain coarse flake graphite.
- ❑ South Korean graphite projects ex graphite producing mines with significant resource growth upside. These projects give Lamboo direct access to the worlds largest flake graphite end user market complimented by superior and established infrastructure
- ❑ Metallurgy confirms potential to produce high quality pure flake graphite.
- ❑ Goal for Australian and/or South Korean projects to be in production by late 2014-early 2015

LAMBOO CONTACTS



Managing Director and CEO

Richard Trevillion

0412 307 807

richard@lambooresources.com.au

Technical Director

Dr Craig Rugless

(08) 9301 1047

craig@lambooresources.com.au

Investor Relations

Ken Banks

0402079999

kbanks@bigpond.net.au