



... developing high purity flake for new technologies

Company Presentation

March 2014



LAMBOO
RESOURCES

... developing high purity flake for new technologies

Investment in Lamboo Resources Limited ("Lamboo") is subject to investment risk, including possible loss of income and capital invested. Neither Lamboo, nor any other member company of the Lamboo Group, nor any officer or employee guarantees any particular rate of return or performance, nor do they guarantee the repayment of capital.

The presentation may contain forward-looking statements regarding the potential of the Company's revenues, projects, interests and the development potential of the Company's business. Any statement describing a goal, expectation, intention or belief of the Company is a forward-looking statement and should be considered an at-risk statement. Given these risks, readers are cautioned not to rely on forward-looking statements. Actual results could differ materially from those anticipated in these forward-looking statements due to many important factors, risks and uncertainties including, without limitation, risk associated with product sales, development and manufacture, risks inherent in the business, future capital needs, general economic uncertainty and other risks detailed from time to time in the Company's announcements to the ASX.



LAMBOO
RESOURCES

... developing high purity flake for new technologies

Competent Persons Statements

Information in this "Company Presentation" relating to Exploration Results and geological data at the McIntosh Project has been compiled by the Technical Director of Lamboo Resources Ltd, Dr Craig S. Rugless who is a Member of the Australasian Institute of Mining and Metallurgy and a Member of the Australian Institute Geoscientists. He has sufficient experience that is relevant to the types of deposits being explored for and qualifies as a Competent Person as defined by the JORC Code 2012. He consents to the inclusion of this information in the form and context in which it appears in this report.

The information relating to the Mineral Resources at the McIntosh Project is extracted from the ASX Announcement as follows:

- ASX Announcement titled 'Significant Flake Graphite JORC Resource Increase at McIntosh Target 1' dated 20 January 2014.

The information relating to Inferred Mineral Resources and Exploration Data associated with the Company's projects in South Korea is extracted from the ASX Announcements as follows:

- ASX Announcement titled 'Significant Flake Graphite Intersection Assay Results from Phase 1 Resource Drilling Program, Geumam Graphite Project, South Korea' dated 27 February 2014.
- ASX announcement titled 'Two Additional Mining Rights Granted over the South Korean - Geumam Graphite Project' dated 13 June 2013 and
- ASX Announcement titled 'Quarterly Activities Report dated 31 July 2013'

The reports are available to view on the Lamboo Resources website www.lambooresources.com. The reports were issued in accordance with the 2012 Edition of the JORC Australasian Code for Reporting of Exploration Results, Mineral Resources and Ore Reserves. The company confirms that it is not aware of any new information or data that materially affects the information included in the original market announcement and, in the case of estimates of Mineral Resources or Ore Reserves, that all material assumptions and technical parameters underpinning the estimates in the relevant market announcement continue to apply and have not materially changed. The company confirms that the form and context in which the Competent Person's findings are presented have not been materially modified from the original market announcement.

Corporate Snapshot

Directors / Management

Mr Richard Trevillion – CEO

- Formerly a director at CloseBrothers (M&A/ECM/Corporate Finance), London
- Formerly a solicitor at Simmons & Simmons, London
- Founder with considerable ASX experience

Dr Bruce Preston – Non-Executive Chairman

- A founding director of Rey Resources
- Formerly an investment banking analyst focusing on resources

Mr Greg Baynton – Non-Executive Director

- Founder and MD of Orbit Capital a boutique advisory business
- NED of NEXTDC and Asia Pacific Data Center
- Former Director of Coalbank

Dr Craig Rugless – Executive Technical Director

- Geologist with 40+ years experience in exploration and project development
- Co-founder of two ASX companies and has significant ASX experience

Mr Rod Williams – Non-Executive Director

- Geologist with 40+ years experience in exploration, evaluation, project development and mining
- Founding director of Xanadu Mines Ltd
- Significant mining and exploration experience

Capital Structure (ASX: LMB)

Shares on Issue	118,447,163
Share Price (21/03/14)	73.5c
Market Capitalisation	\$87.1 million
High/Low (12mths)	\$0.75 / \$0.04
Options on Issue 15c - 15/8/15	6,952,502
Performance Rights (shares to be issued on completion of a JORC compliant Inferred Resource of 100,000 tonnes and a successful pre-feasibility study .)	22,500,000
Total Shareholders	1,071

Top Shareholders

Top 20	59.8%
--------	-------

GRAPHITE FACTS

Types of Graphite



LUMP



AMORPHOUS



FLAKE



Low purity flake graphite **cannot be used** in the production of most **new technologies**



HIGH PURITY
CRYSTAL
FLAKE
GRAPHITE

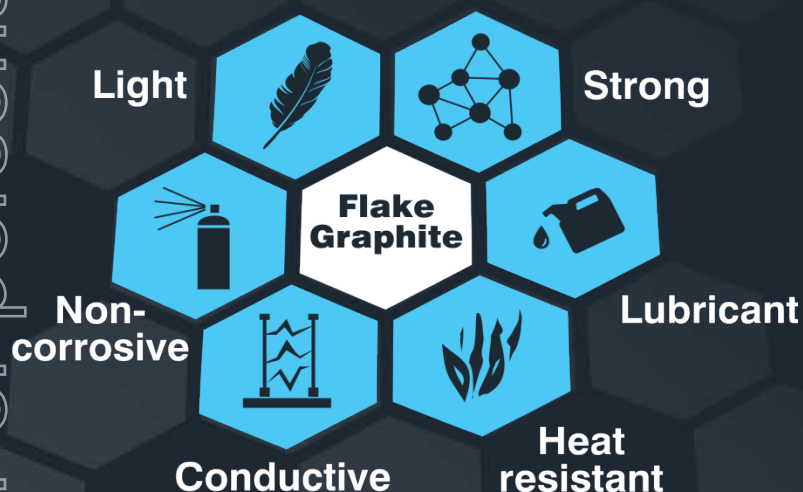
HIGH PURITY FLAKE GRAPHITE IS IN
VERY **LIMITED** SUPPLY

LAMBOO'S GRAPHITE RESERVES ARE
HIGH PURITY FLAKE

ONLY HIGH PURITY FLAKE
CAN BE USED IN THE PRODUCTION
OF THESE **NEW TECHNOLOGIES**

GRAPHITE FACTS

FLAKE GRAPHITE PROPERTIES



WORLDWIDE DEMAND TO
INCREASE
80% IN SEVEN
YEARS

New **Green Technologies**
driving demand



Lithium Ion Batteries



Pebble Bed
Nuclear Reactors



Graphene

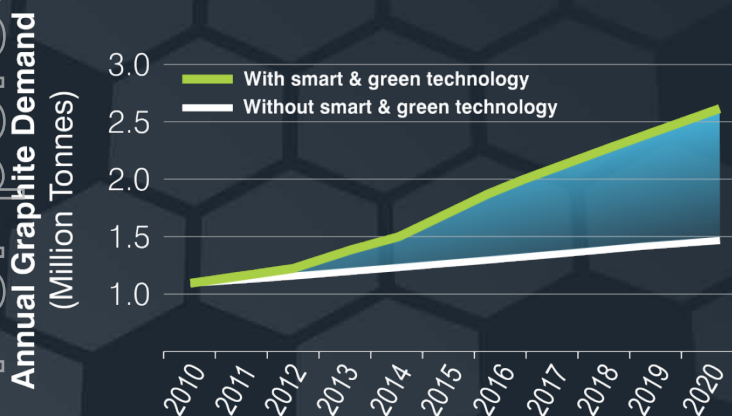


Supercapacitors

GRAPHITE MARKET

GRAPHITE DEMAND A
\$12 BILLION
MARKET

GLOBAL GRAPHITE DEMAND



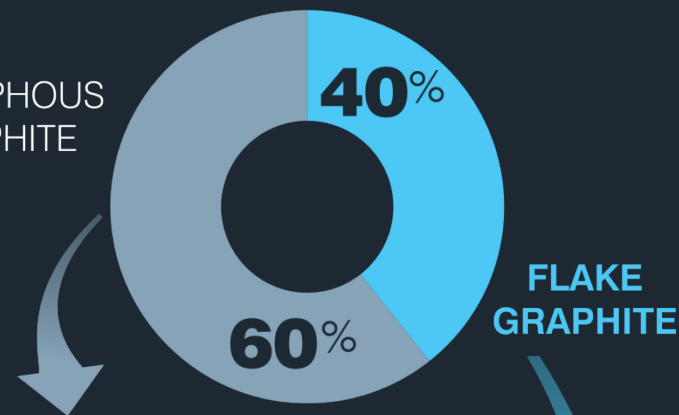
DEMAND FOR
FLAKE GRAPHITE
TO INCREASE BY

11%
pa

DRIVEN BY
SMART & GREEN
TECHNOLOGY

SUPPLY

AMORPHOUS
GRAPHITE



FLAKE
GRAPHITE

CHINA CURRENTLY
PRODUCES ABOUT
90% OF THE
WORLD'S
GRAPHITE

- Low-carbon amorphous
- Diminishing flake reserves
- Declining production

\$

LOWEST SUPPLY
HIGHEST PRICE

LAMBOO
RESOURCES

&

TECHNOLOGY

LAMBOO'S AIM IS TO ACHIEVE
LONG TERM FLAKE GRAPHITE PRODUCTION



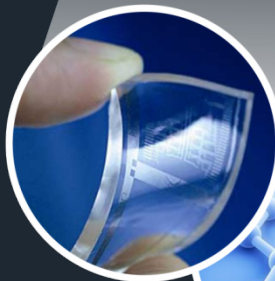
Lithium Ion Batteries



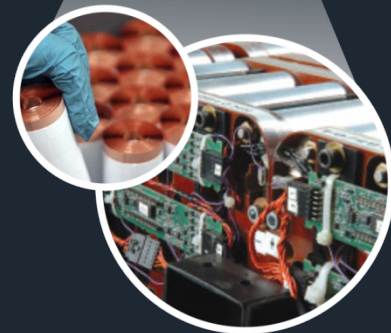
Pebble Bed
Nuclear Reactors



Graphene

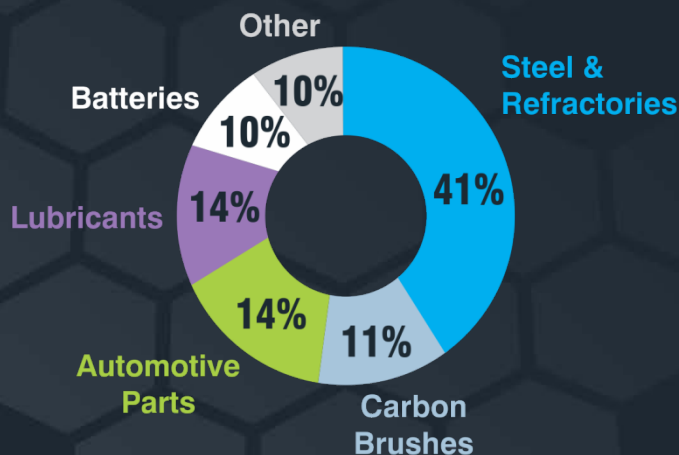


Supercapacitors



GRAPHITE USES

CURRENT GRAPHITE USAGE



SYNTHETIC
FLAKE
GRAPHITE

VS

NATURAL
FLAKE
GRAPHITE

COST

\$20,000 -
\$160,000/t

\$1,600 -
\$5,000/t

CONDUCTIVITY

LESS
CONDUCTIVE

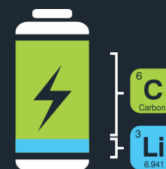
MORE
CONDUCTIVE

SMART & GREEN TECHNOLOGY USE

Lithium Ion Batteries



10-20 TIMES MORE
GRAPHITE THAN
LITHIUM USED



Pebble Bed Nuclear Reactors



A **1 GW** PEBBLE BED REACTOR **NEEDS**
3000 tonnes OF FLAKE GRAPHITE
TO START UP
1000 tonnes OF FLAKE GRAPHITE
TO OPERATE PER YEAR

Graphene



75% OF FLAKE GRAPHITE
WASTED IN CONVERSION
PROCESS

Supercapacitor Fuel Cells



80 kg OF FLAKE GRAPHITE USED
THE AVERAGE FUEL CELL
VEHICLE

LOW COST MODEL

Australia Operations

EXCELLENT **LOW COST** INFRASTRUCTURE



TRUCK TO
DEEP WATER
PORT

2.5 hours



STRONG DEMAND



RIGHT PRODUCT



WELL POSITIONED



LOW COST PRODUCER



\$\$\$\$\$\$

South Korea Operations

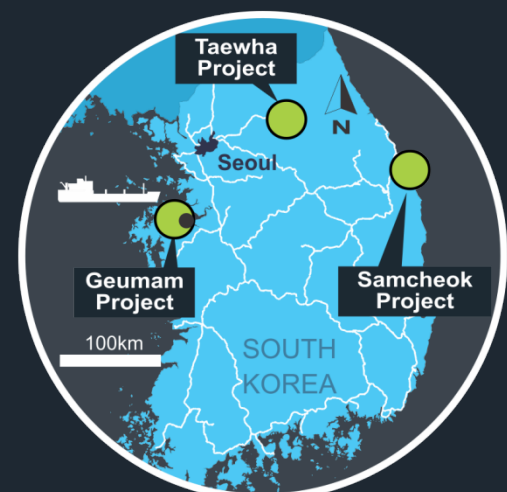
EXCELLENT **LOW COST** INFRASTRUCTURE



TRUCK TO
WORLD'S
LARGEST PORT

9 km

CLOSE PROXIMITY TO
BIGGEST BUYERS
IN THE WORLD



McIntosh Graphite Project - Highlights

- JORC resource of 7.1M tonnes @ circa 5% TGC representing 20% of T1
- MOU with China Hengda (CSHGC) for supply and processing – one of the only named deals on the ASX
- RC drilling and mapping confirms extensive flake graphite at targets 5 and 6
- New Black Rock EL at McIntosh has the potential for an additional 25 km strike length of graphitic schist horizons
- Metallurgy produces concentrate up to 99.9% with high purity free of deleterious elements independently verified to be of Li battery quality throughout strike
- Flake size mainly coarse throughout
- Scoping study underway

McIntosh Graphite Project - Highlights

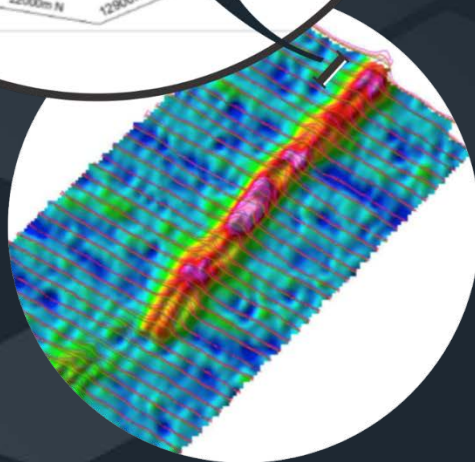
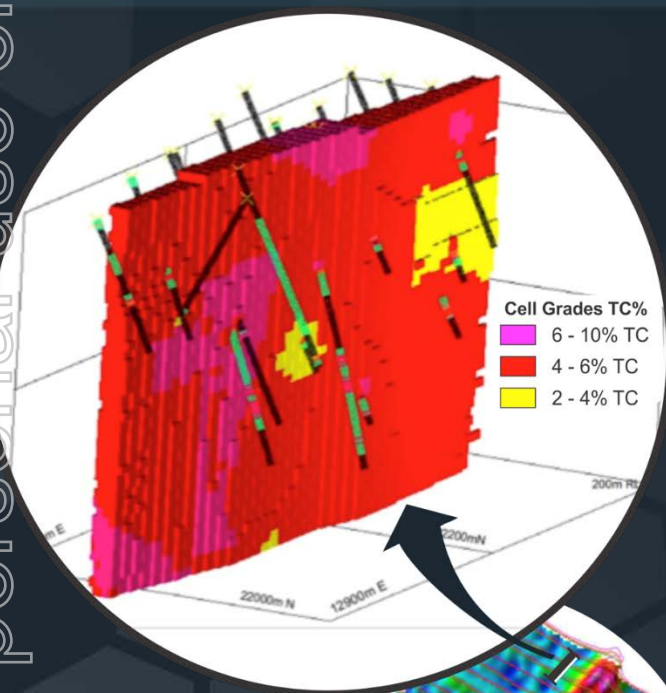
- LMB's CSHGC MOU is one of small number of global graphite juniors with a commercial deal
- CSHGC is one of the world's largest pure high quality flake graphite businesses
- Supply arrangements 'marked to market' contract prices for high purity tech quality flake
- Processing and purification of future McIntosh output to be conducted by CSHGC
- Collaboration on development work

Target 1 Resource

TARGET 1

ESTIMATED INDICATED & INFERRED JORC RESOURCE

7.1m tonnes grading circa 5 TC%



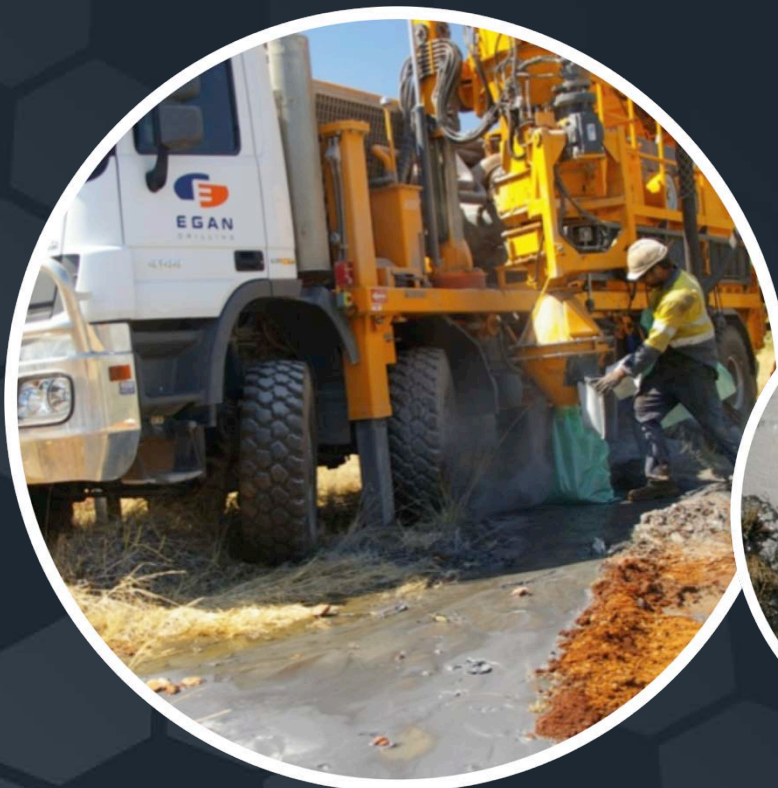
Project Area	Ore Type	Resource Classification	Tonnes	Graphite (%TGC)	Contained graphite (tonnes**)
Target 1 Resource	Primary	Indicated	4,470,000	4.71	210,350
Upgrade	Oxide	Inferred	540,000	4.51	24,350
	Primary	Inferred	2,125,000	4.84	103,000
	Oxide + primary	Upgraded Resource	7,135,000	4.73	337,700
Target 1 Maiden Resource	Primary	Indicated	3,615,000	4.89	176,770
(ASX:LMB Ancmt April 2013)	Oxide	Inferred	350,000	5.03	17,600
	Primary	Inferred	1,359,000	4.93	67,000
	Oxide + primary	Initial Resource	5,323,000	4.91	261,370

* Resource modelling was undertaken with IMS mining software by Mr R.E Williams from Norvale Pty Ltd.

** Rounding of figures occurs during resource modelling under JORC.

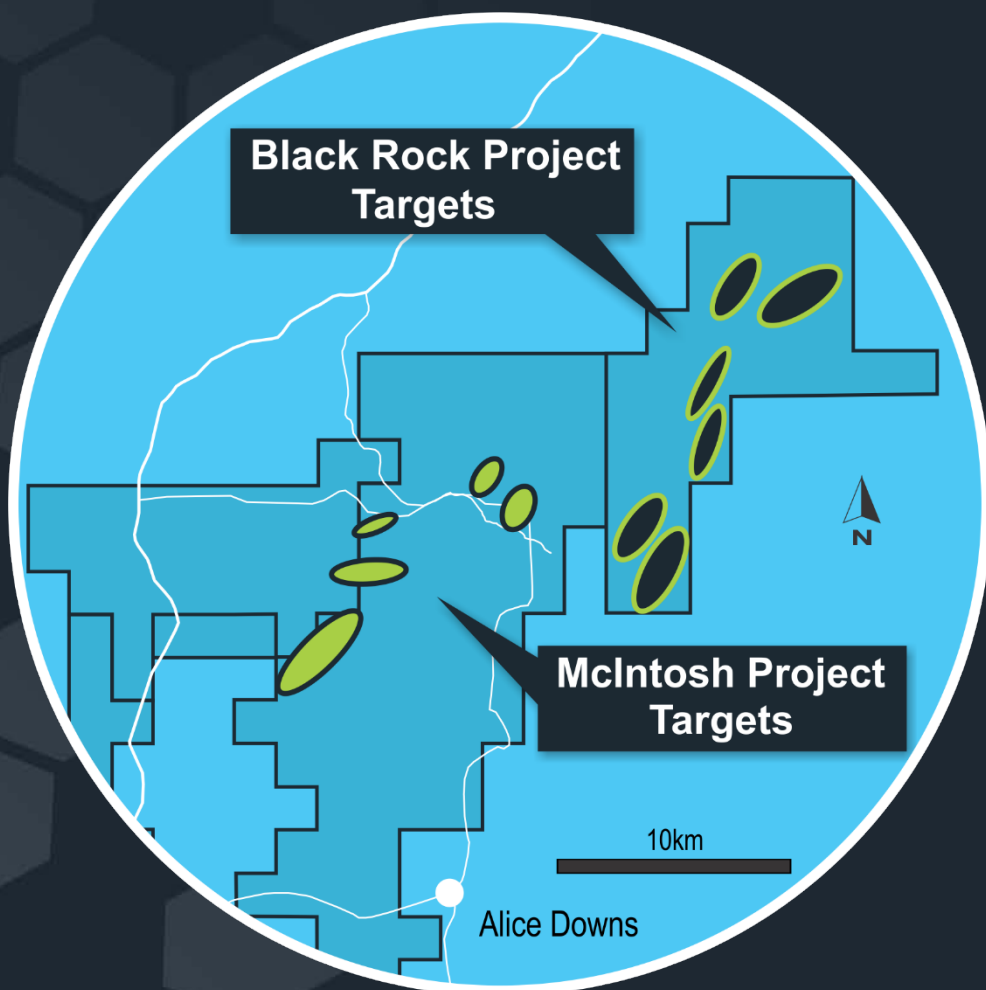
McIntosh Flake Graphite: Separation Evidence

RC drilling at *Targets 1, 2 & 3* reveal a schistose flake graphite that will respond to standard metallurgical extraction techniques.



Ease of separation from host rock shown by flake graphite floating from water produced during drilling.

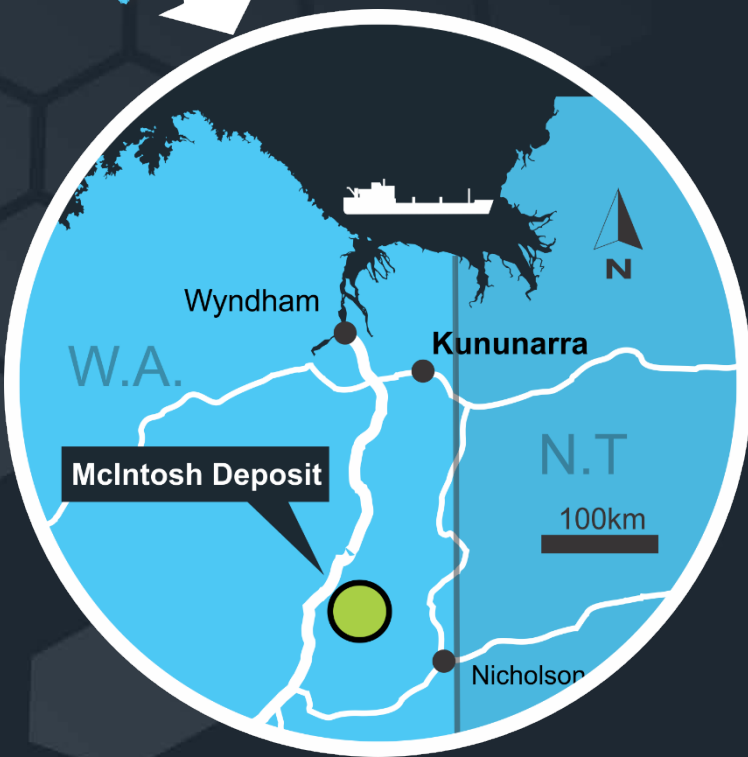
Target Potential



- Additional EM anomalies at Black Rock project indicate an additional 15 km of strong EM anomalies requiring exploration.
- Total strike length potential for flake graphite now in excess of 25 km.

Infrastructure

- Port Wyndham is the only deep water port between Broome and Darwin and lies 280km from the McIntosh Project via the Great Northern Highway and has available capacity.



Metallurgy confirms high grade & purity

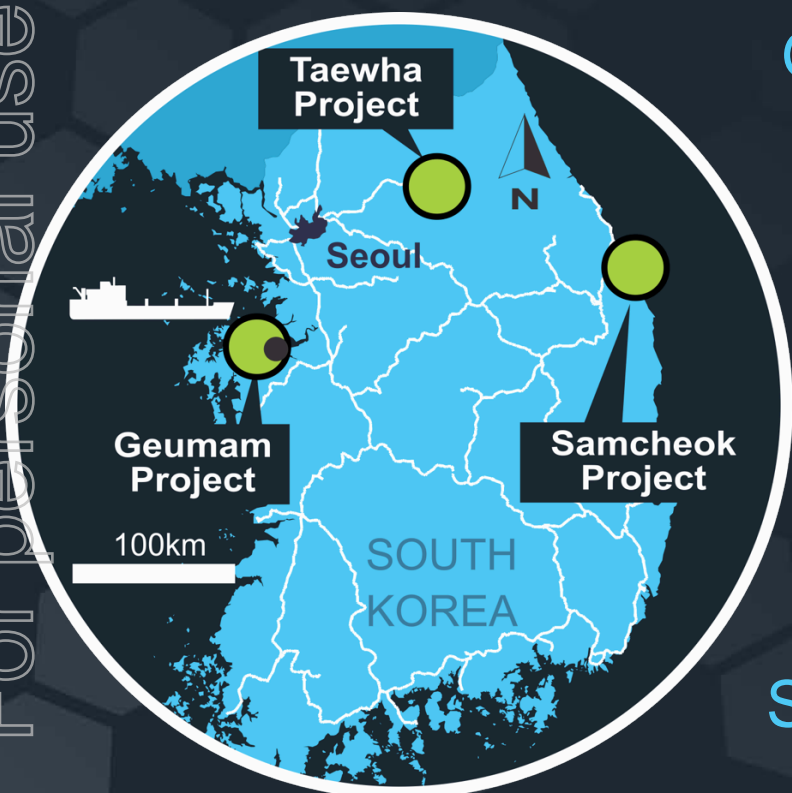
- All large to coarse flake
- High Concentrate grades up to 96.1% with XRD analysis confirming up to 99% crystalline graphite
- High purity free of deleterious elements
- Purity to the standard of Li batteries independently verified

South Korea Graphite - Highlights

- Outstanding intercepts at Geumam project of 54m, 44 and 35m at 10%TGC on average
- Second phase drilling to substantially increase existing resource
- Quality high purity flake graphite suitable for high end user market
- Lamboo joins prestigious Korean Institute of Carbon Convergence Council
- Excellent infrastructure
- Established route to market
- Low cost mining and processing expected

South Korea Graphite - Projects

For personal use only



Geumam

- Initial Inferred JORC-code compliant resource of 200,000 tonnes @ 10% Cg

Taewha

- Initial Inferred JORC-code compliant resource of 170,000 tonnes @ 6.8% Cg

Samchoek

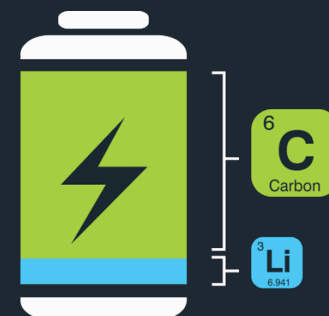
- Initial Inferred JORC-code compliant resource of 200,000 tonnes @ 4.8% Cg

LAMBOO FLAKE and Li-Ion Batteries

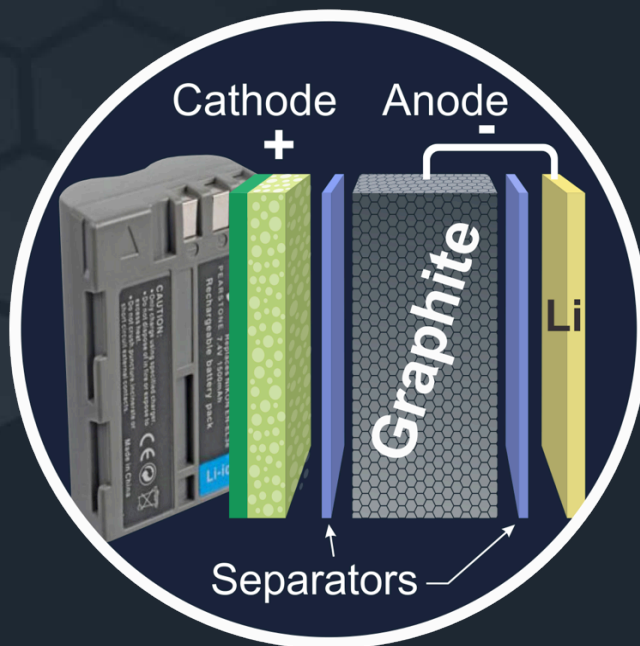


10-20

TIMES MORE
GRAPHITE
THAN LITHIUM
IN A LI BATTERY



LAMBOO'S
**HIGH PURITY
FLAKE GRAPHITE**



PROVEN COMPATIBLE IN



**LITHIUM-ION
BATTERY PRODUCTION**

Lamboo Graphite Summary

- JORC Resource for Target 1 flake graphite WA project at McIntosh. Further drilling confirms potential for continued significant resource upgrade. Targets 5 and 6 contain coarse flake graphite
- South Korean graphite projects are all former graphite producing mines with significant resource growth upside. These projects give Lamboo direct access to the world's largest flake graphite end user market complimented by superior and established infrastructure
- Metallurgy confirms potential to produce high quality pure flake graphite
- Goal for Australian and/or South Korean projects targeting pilot production by late 2014 - 2015

Advanced Particle Group

- Lamboo establishes commercial arm 'Advanced Particle Group' (APG) to exploit new technology applications of flake graphite within the fields of graphene, pebble bed technology and lithium ion batteries
- APG partnering with Monash University using their materials science expertise
- Potential grant funding of up to \$5 million from sources including Singapore government based organisations
- Further collaboration arrangements in negotiation internationally

Lamboo Contacts

CEO

Richard Trevillion

0412 307 807

richard@lambooresources.com.au

Technical Director

Dr Craig Rugless

(08) 9301 1047

craig@lambooresources.com.au

Investor Relations

Ken Banks

0402 079 999

kbanks@bigpond.net.au