

## ASX ANNOUNCEMENT

*Lamboo Resources is an Australian company  
focusing on substantial flake graphite assets  
located in the East Kimberley and South Korea*



Lamboo Resources Limited  
ABN 27 099 098 192

ASX: LMB

Operations Office  
Unit 2, 7 Packard Street  
Joondalup WA 6027  
Telephone: +61 8 9301 1047

Registered Office  
Level 5, 10 Market Street  
Brisbane QLD 4000  
Telephone: +61 7 3212 6203  
Facsimile: +61 7 3212 6250

### Contact

Craig Rugless - Technical Director  
craig@lambooresources.com.au  
0427 900 061  
Richard Trevillion - CEO and  
Managing Director  
richard@lambooresources.com.au  
0412 307 087

### Website

[www.lambooresources.com.au](http://www.lambooresources.com.au)

16 October 2013

### **Resource Drilling Program at South Korean - Geumam Graphite Project**

#### Highlights

##### ➤ **Confirmatory drilling program commences at Geumam.**

Lamboo Resources (Lamboo or the "Company"), is pleased to announce that a Drilling Permit was issued by the Dangjin City County Government for the Geumam graphite project, in South Korea. Prior to this, Lamboo completed the required access agreements with local surface rights holders,

Lamboo has signed a drilling contract with a local drilling company to supply 3 drill rigs to drill 21 holes, for a total of 2,250 metres of HQ triple tube diamond drill core. The objective of the drilling programme is to substantially increase the current resource base at Geumam.

Richard Trevillion; CEO and Lamboo's Korean Country Manager Kim, Wan-Joong, said: "With all required approvals now in place, drilling rigs have already started at our Geumam flake graphite project. This is an important step in looking to grow our resource base and to progress Lamboo from exploration to becoming a flake graphite producer."

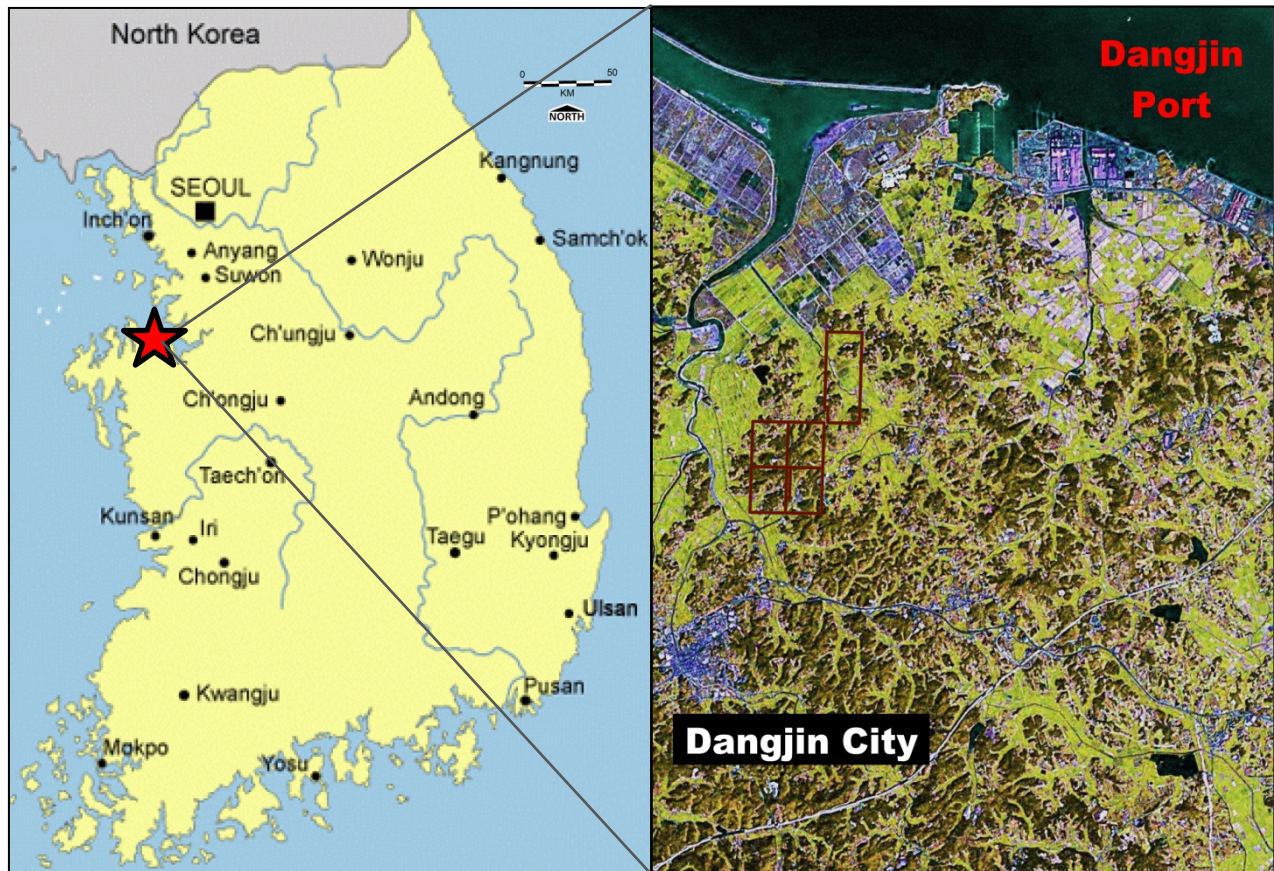


Figure 1: Geumam Graphite Project – Location and Major Infrastructure.

### Geumam Project Background

#### **Location**

The Geumam graphite project is located 67km southwest of Seoul on the western coast of South Korea, situated about 4km north of Dangjin City (Figure 1).

The project is located in a rural setting surrounded by world class infrastructure, including the major Ports of Dangjin and Pyeongtaek, the largest cluster of domestic steel mills (*Hyundai Steel*, *Dongbu Steel*, and *Dongkuk Steel*), the Dangjin power station (2,400MW capacity) and numerous other industries, including pharmaceuticals and refractories.

Dangjin City and surrounding Chungnam Province lie within the designated “Yellow Sea Free Economic Zone”, business-orientated region that is actively seeking and attracting investors and industries, including foreign-owned enterprises. A potential graphite mineral processing plant would be ideally suited to, and is compatible with, the industries planned and designated for the *Seongmum* or *Hapdeok Industrial Complexes*, currently under development.

#### **Tenure**

Lamboo Resources Limited subsidiary *Won Kwang Mines Inc* holds five (5) granted Mining Rights over Geumam (Registered No’s 80077/Dangjin 55-3; 80014/Dangjin 65-1, 78355/Dangjin 65-2, 200268/Dangjin 54-2 & 200269/Dangjin 55-4). These granted Mining Rights cover a total area of 403ha. Additional applications for 2 Mining Rights (numbers Dangjin 54-4 & 55-1) are currently being processed by the Central Mining Registry office of MOTIE. The tenements for the Geumam project are indicated on Figure 2.



## **Geumam Project Description**

Geumam was a historical graphite mining operation from 1985-1992. The project has potentially significant areas of flake graphite mapped in outcrop at areas A, B, C, D, E, F and G (Figure 2).

### ***Geology***

The geology of the Geumam area consists of biotite gneiss, schist and quartzite of the Precambrian Gyeonggi Gneiss Complex and granite gneiss of the Sobaegsan Gneiss Complex. The metamorphic fabric of the biotite gneiss and schist is predominantly northeast-southwest striking, dipping gently-moderately to the southeast.

Graphite flakes average about 85µm in size (AMDEL, 2012), hosted in graphite schist, accompanied by quartz, biotite, sericite, chlorite and muscovite. The graphite schist is interpreted to originally have been carbonaceous, feldspathic quartz sandstone. Thin calc silicate marble bed (originally a limestone) underlies the graphite mineralization in several places.

### ***Resource Estimate***

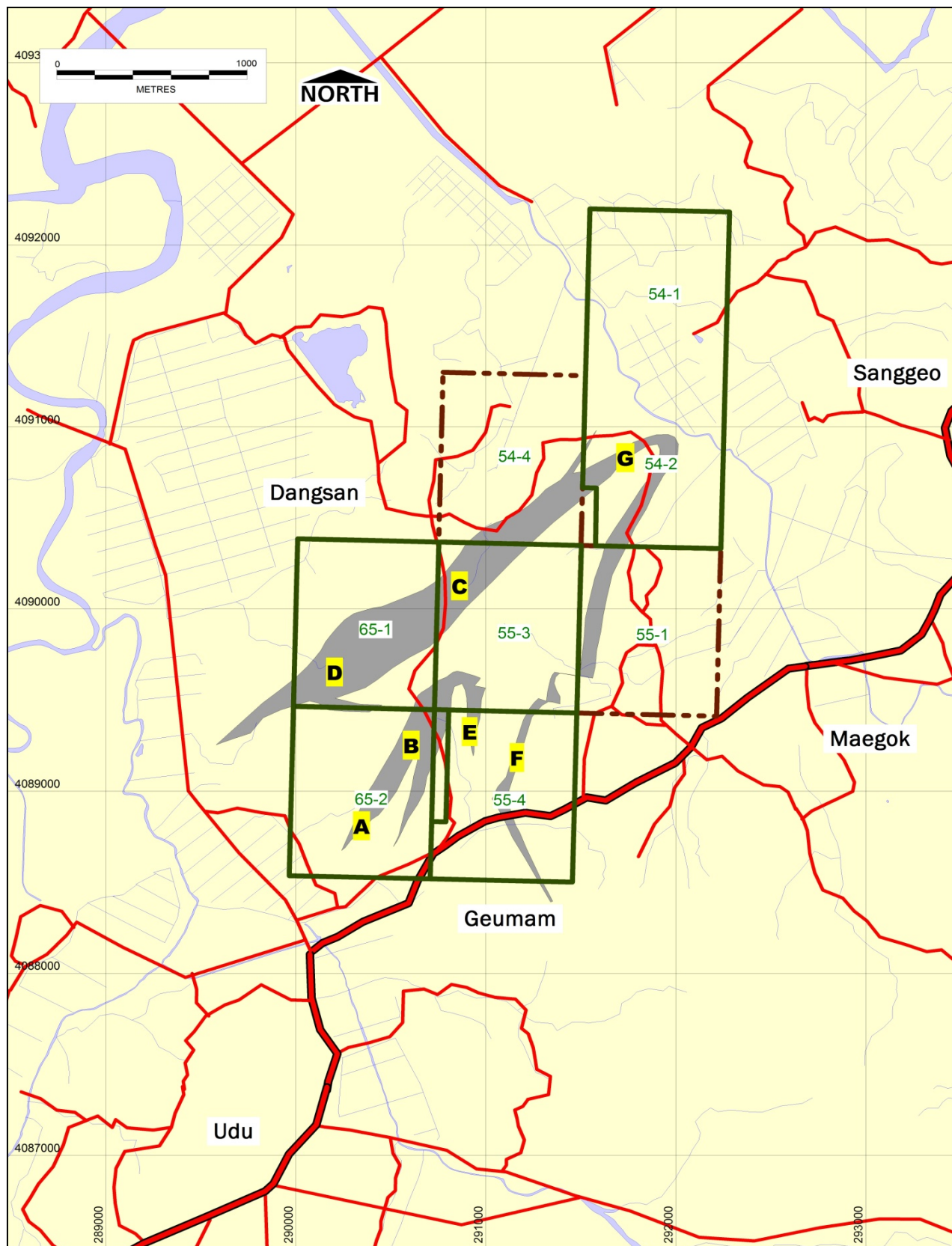
Independent Geologist *Veronica Webster Pty Ltd* (2012) has previously reported an inferred mineral resource of 200,000 tonnes @ 10% Cg\* at Geumam, prepared under the 2004 JORC CODE Guidelines (*Peninsula Graphite Limited* Prospectus dated 6 September 2012; *Lamboo Resources Limited*-ASX Announcement-dated 6 May 2013).

**\* Cautionary Statement:** This “inferred mineral resource” estimate was based on check rock chip sampling conducted by *Senlac Geological Services Pty Ltd* (2012) and historical outcrop, trench and pit rock chip sampling undertaken by the *Korean Mining Promotion Corporation* (KMPC, 1980a, 1980b & 1989) of the surficial weathered zone of Areas B and C. It is uncertain if further exploration will produce a resource.

### ***Historical Mining Operation***

A mining operation and flotation processing plant was established at Area B at Geumam in 1986, consisting of a run-of-mine stockpile, conveyor, feed hopper, ball mill, two flotation cells (Rougher and cleaner cells), and a regrind ball mill. The plant was capable of producing 6tpd fine flake graphite flotation concentrate (>85% Cg), which it sold to export markets in Japan and Europe.

The mill was subsequently upgraded with an alkaline-leach plant to produce high-grade fine flake graphite concentrate (93-97% Cg) in July 1987 (KMPC, 1988), which it sold to domestic markets for micronizing into superfine graphite powders. The mine probably ceased operations in about 1992.



**Figure 2: Geumam graphite project Tenure Map.** The granted Mining Rights with respect to the mapped graphite schist beds and prospect Areas A, B, C, D, E, F and G are indicated. Applications for Mining Rights are indicated by the dark red dashed line.

### **Proposed Exploration Programme**

Previous exploration by Lamboo Resources has identified previously reported an Exploration Target\* at Areas A, B, C, D, E, F and G, as illustrated in Figure 2 and summarised in Table 1 below.

**Table 1. Summary of Exploration Targets at the Geumam Graphite Project.**

<b>Prospect Area</b>	<b>Length (m)</b>	<b>Width (m)</b>	<b>Depth (m)</b>	<b>Est SG (g/cc)</b>	<b>Tonnes (t)</b>	<b>Grade (% Cg)</b>	<b>Contained Graphite (Mt)</b>
<b>A</b>	120	45	100	2.3	1-2Mt	8-15%	0.08-0.30
<b>B West</b>	300	35	100	2.3	2-3Mt	2-8%	0.04-0.24
<b>B East</b>	250	30	100	2.3	2-3Mt	2-8%	0.04-0.24
<b>C</b>	600	50	100	2.3	5-8Mt	8-15%	0.40-1.20
<b>D</b>	80	50	100	2.3	1Mt	2-8%	0.02-0.08
<b>E</b>	300	25	100	2.3	1-2Mt	2-8%	0.02-0.08
<b>F</b>	850	25	100	2.3	3-6Mt	5-15%	0.15-0.90
<b>G</b>	400	25	100	2.3	2-3Mt	5-15%	0.10-0.45
<b>TOTALS</b>				<b>2.3</b>	<b>17-28Mt</b>	<b>5-15%</b>	<b>0.9 to 3.6Mt</b>

**\* Cautionary Statement:** “Exploration Target” estimate was prepared by Mr Christopher M. Sennitt *MSc Economic Geology, BSc Applied Geology, FAIG, SEG* based on geological mapping completed in 2012 by *Senlac Geological Services Pty Ltd* and historical mapping and sampling undertaken by the *Korean Mining Promotion Corporation* (1980a, 1980b & 1980c). The estimate is conceptual in nature, as there is insufficient exploration to define a resource. It is uncertain if further exploration will produce a resource.

Lamboo is aiming to drill test Areas B, C and E with the initial Phase I drilling program at Geumam. A total of 21 drill holes for a total of 2,250 metres of HQ triple tube drill core is initially proposed for Phase I. The drill collars for this drilling program are identified in Figures 3 and 4. The drilling programme is designed to substantially increase the current resource base at Geumam.

The Phase I drilling program is expected to take 2 months to complete, using the 3 diamond drill rigs contracted to be mobilised to site.

### **Competent Person Statement**

Information in this “ASX Announcement” relating to Inferred Mineral Resources, Exploration Targets and Exploration Data associated with the Company’s Geuman project in South Korea was compiled by Mr Christopher Sennitt who is the principal of *Senlac Geological Services Pty Ltd*. Mr Sennitt is a Fellow of the *Australian Institute of Geoscientists* and a Member of the *Society of Economic Geologists*. *Senlac Geological Services Pty Ltd* is a shareholder of *Lamboo Resources Ltd* and holds further interests in share issues related to specific inferred resources targets. Mr Sennitt has sufficient experience that is relevant to the style of mineralisation and type of deposit under consideration and to the activity being undertaken to qualify as a Competent Person as defined in the 2012 Edition of the “*Australasian Code for Reporting of Exploration Results, Mineral Resources and Ore Reserves*” (JORC Code 2012 Edition). Mr Sennitt consents to the inclusion in this ASX Announcement of the matters based on his information in the form and context in which it appears.





LAMBOO  
RESOURCES

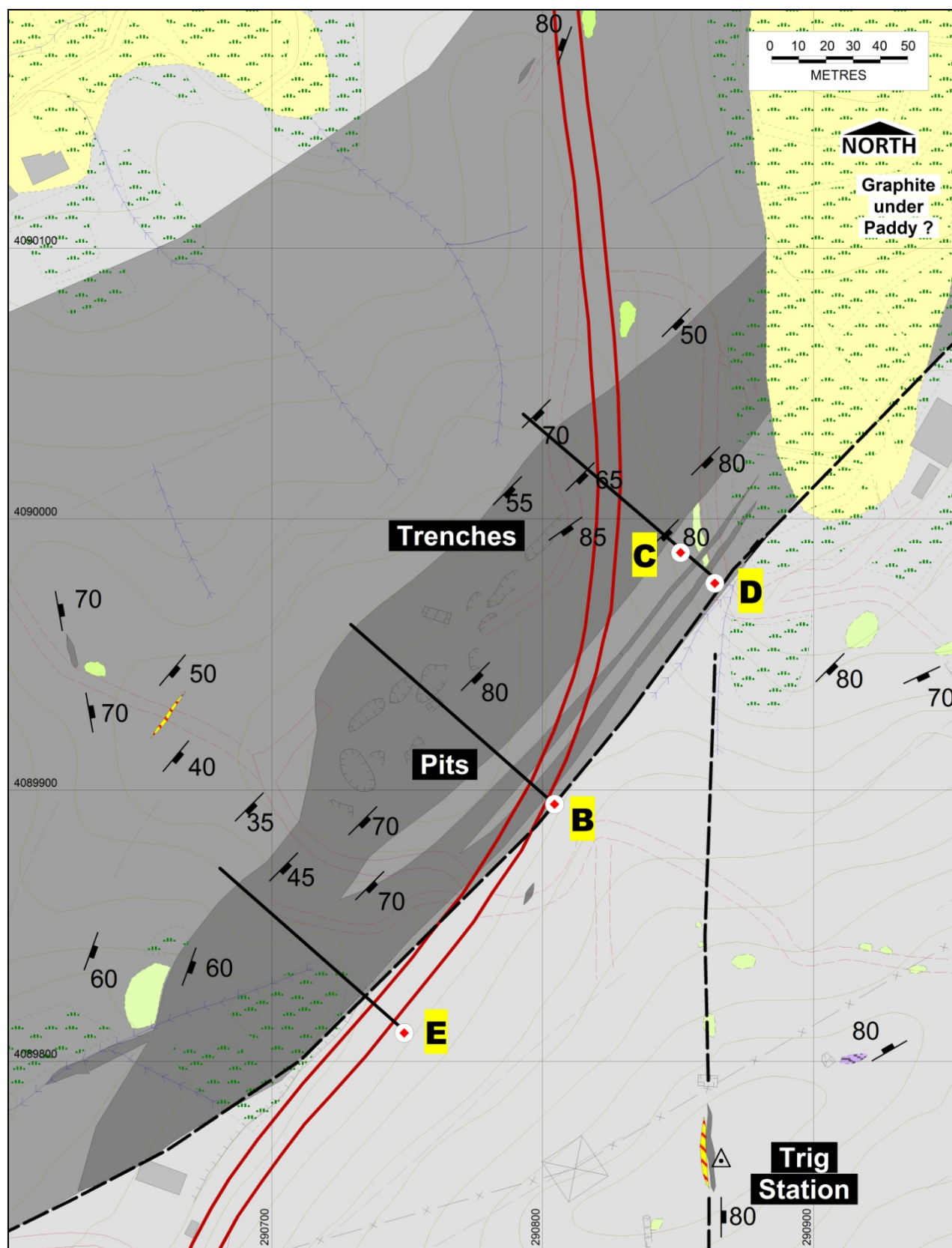


Figure 3. Proposed Drilling Program at Area C, with drill pads indicated.





LAMBOO  
RESOURCES

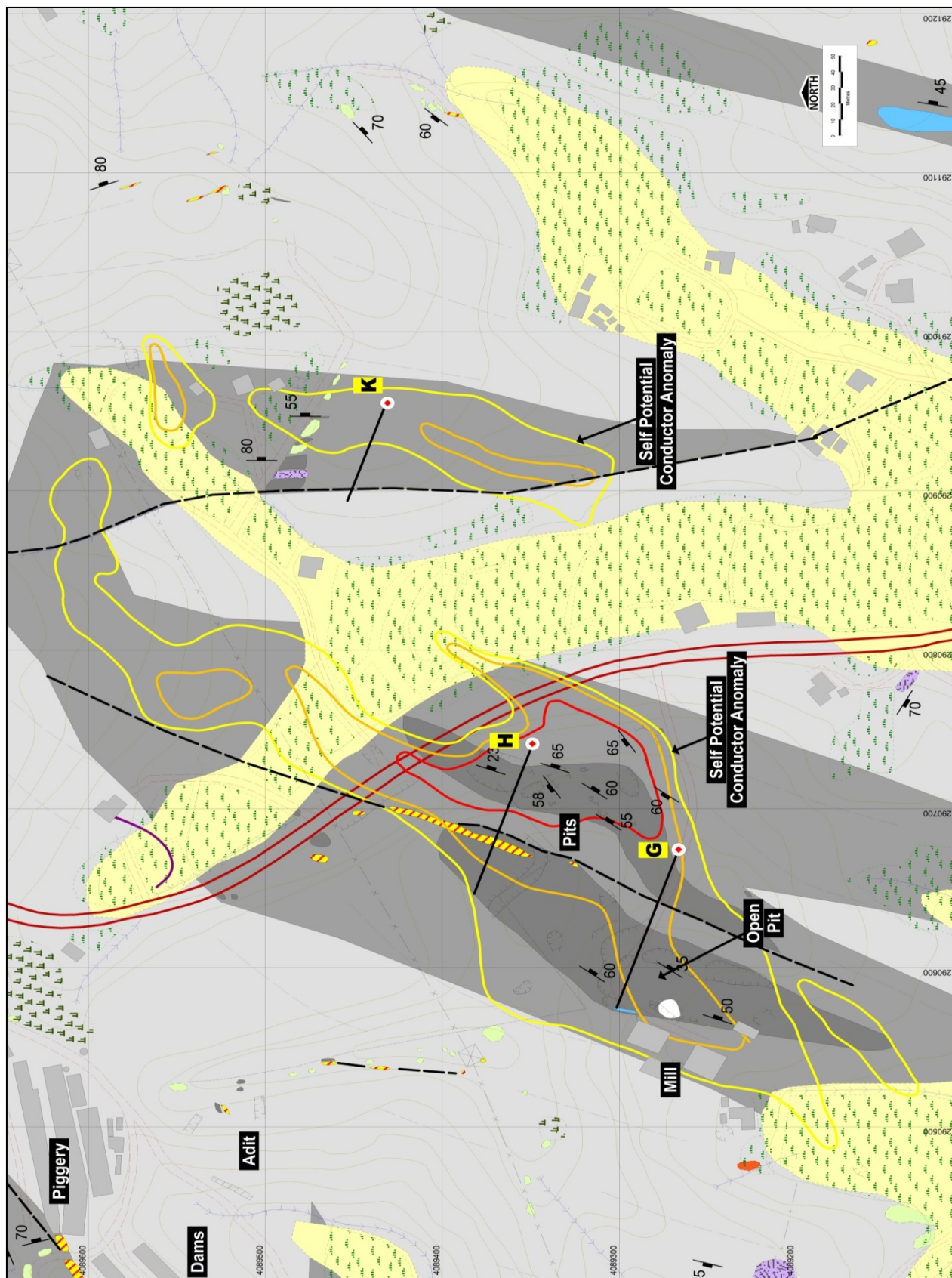


Figure 4. Proposed Drilling Program at Area B and Area E, with drill pads indicated.





**Figure 5. Traditional Pigs Head Ritual of “Blessing the Drilling Program” Ceremony performed by company and drilling personnel at Collar B, Area C at Geumam.**