



... developing high purity flake for new technologies

February 2014 Update Presentation



. . . developing high purity flake for new technologies

Investment in Lamboo Resources Limited ("Lamboo") is subject to investment risk, including possible loss of income and capital invested. Neither Lamboo, nor any other member company of the Lamboo Group, nor any officer or employee guarantees any particular rate of return or performance, nor do they guarantee the repayment of capital.

The presentation may contain forward-looking statements regarding the potential of the Company's revenues, projects, interests and the development potential of the Company's business. Any statement describing a goal, expectation, intention or belief of the Company is a forward-looking statement and should be considered an at-risk statement. Given these risks, readers are cautioned not to rely on forward-looking statements. Actual results could differ materially from those anticipated in these forward-looking statements due to many important factors, risks and uncertainties including, without limitation, risk associated with product sales, development and manufacture, risks inherent in the business, future capital needs, general economic uncertainty and other risks detailed from time to time in the Company's announcements to the ASX.



... developing high purity flake for new technologies

Competent Persons Statements

Information in this "Company Presentation" relating to Exploration Results and geological data at the McIntosh Project has been compiled by the Technical Director of Lamboo Resources Ltd, Dr Craig S. Rugless who is a Member of the Australasian Institute of Mining and Metallurgy and a Member of the Australian Institute Geoscientists. He has sufficient experience that is relevant to the types of deposits being explored for and qualifies as a Competent Person as defined by the JORC Code 2012. He consents to the inclusion of this information in the form and context in which it appears in this report.

The information relating to the Mineral Resources at the McIntosh Project is extracted from the ASX Announcement as follows:

- ASX Announcement titled 'Significant Flake Graphite JORC Resource Increase at McIntosh Target 1' dated 20 January 2014

The information relating to Inferred Mineral Resources, Exploration Targets and Exploration Data associated with the Company's projects in South Korea is extracted from the ASX Announcements as follows:

- ASX announcement titled 'Two Additional Mining Rights Granted over the South Korean - Geumam Graphite Project' dated 13 June 2013 and
- ASX Announcement titled 'Quarterly Activities Report dated 31 July 2013'

The reports are available to view on the Lamboo Resources website www.lambooresources.com. The reports were issued in accordance with the 2012 Edition of the JORC Australasian Code for Reporting of Exploration Results, Mineral Resources and Ore Reserves. The company confirms that it is not aware of any new information or data that materially affects the information included in the original market announcement and, in the case of estimates of Mineral Resources or Ore Reserves, that all material assumptions and technical parameters underpinning the estimates in the relevant market announcement continue to apply and have not materially changed. The company confirms that the form and context in which the Competent Person's findings are presented have not been materially modified from the original market announcement.

Corporate Snapshot

Directors/Management

Mr Richard Trevillion – MD and CEO

- Formerly a director at Close Brothers (M&A/ECM/Corporate Finance), London
- Formerly a solicitor at Simmons & Simmons, London
- Founder with considerable ASX experience

Dr Bruce Preston– Non exec Chairman

- A founding director of Rey Resources
- Formerly an investment banking analyst focusing on resources

Greg Baynton– Non exec

- Founder and MD of Orbit Capital a boutique advisory business
- NED of NEXTDC and Asia Pacific Data Center
- Former Director of Coalbank

Dr Craig Rugless – Executive Technical Director

- Geologist with 40+ years experience in exploration and project development
- Co-founder of two ASX companies and has significant ASX experience

Mr Rod Williams – Non exec

- Geologist with 40+ years experience in exploration, evaluation, project development and mining
- Founding director of Xanadu Mines Ltd
- Significant mining and exploration experience

Capital Structure (ASX: LMB)

Shares on Issue	97,394,555
Last Share Price (5/02/14)	30c
Market Capitalisation	\$29.2 million
High / Low (last 12 mths)	\$0.36 / \$0.04
Options on Issue 15c-15/8/15	7,253,331
Performance Rights <small>(shares to be issued on completion of a JORC compliant Inferred Resource of 100,000 tonnes and a successful pre- feasibility study.)</small>	22,500,000
Total Shareholders	900

Top Shareholders

National Nominees	13.4%
Pathfinder Exploration Pty Ltd (Director)	10.8%
Norvale Pty Ltd (Director)	7.2%
UBS Nominees	4.3%
Richard Trevillion (Director)	2.9%
Top 20	63.6%



GRAPHITE FACTS

Types of Graphite



LUMP



AMORPHOUS



FLAKE

1.  Low purity flake graphite **cannot be used** in the production of most **new technologies**

2.  **HIGH PURITY
CRYSTAL
FLAKE
GRAPHITE**

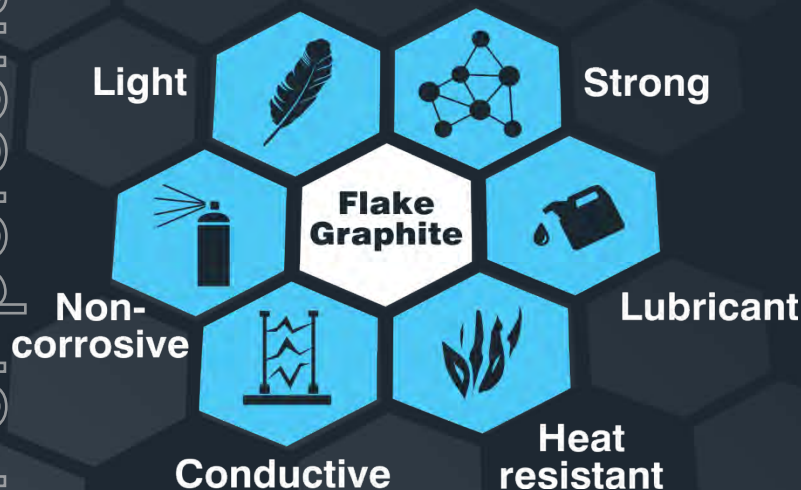
HIGH PURITY FLAKE GRAPHITE IS IN
VERY **LIMITED** SUPPLY

LAMBOO'S GRAPHITE RESERVES ARE
HIGH PURITY FLAKE

ONLY HIGH PURITY FLAKE
CAN BE USED IN THE PRODUCTION
OF THESE **NEW TECHNOLOGIES**

GRAPHITE FACTS

FLAKE GRAPHITE PROPERTIES



WORLDWIDE DEMAND TO
INCREASE
80% IN SEVEN
YEARS

New **Green Technologies**
driving demand



Lithium Ion Batteries



Pebble Bed
Nuclear Reactors



Graphene

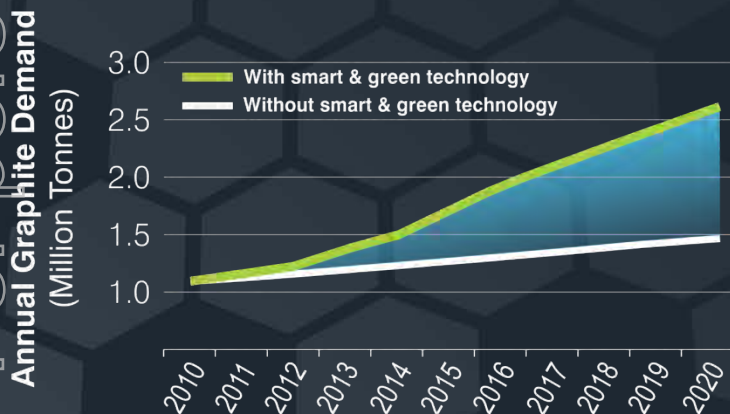


Supercapacitors

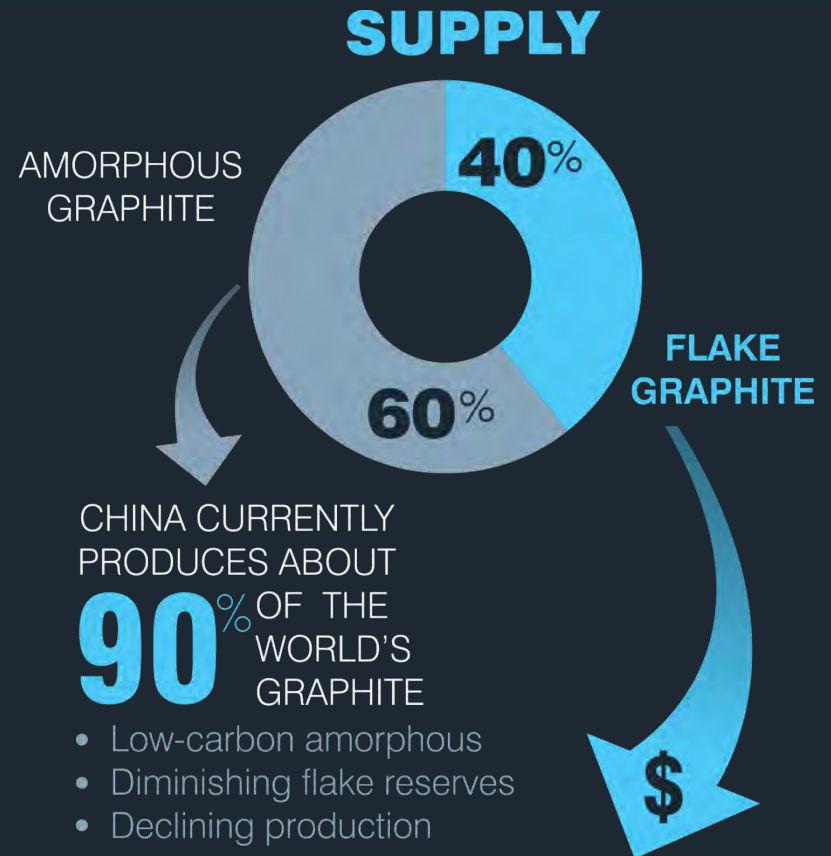
For personal use only

GRAPHITE DEMAND A **\$12 BILLION** MARKET

GLOBAL GRAPHITE DEMAND



DEMAND FOR
FLAKE GRAPHITE
TO INCREASE BY **11%** pa DRIVEN BY
SMART & GREEN TECHNOLOGY



LOWEST SUPPLY
HIGHEST PRICE

**LAMBOO
RESOURCES**

&

TECHNOLOGY

LAMBOO'S AIM IS TO ACHIEVE
LONG TERM FLAKE GRAPHITE PRODUCTION



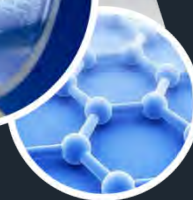
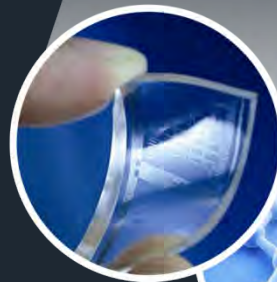
Lithium Ion Batteries



**Pebble Bed
Nuclear Reactors**



Graphene

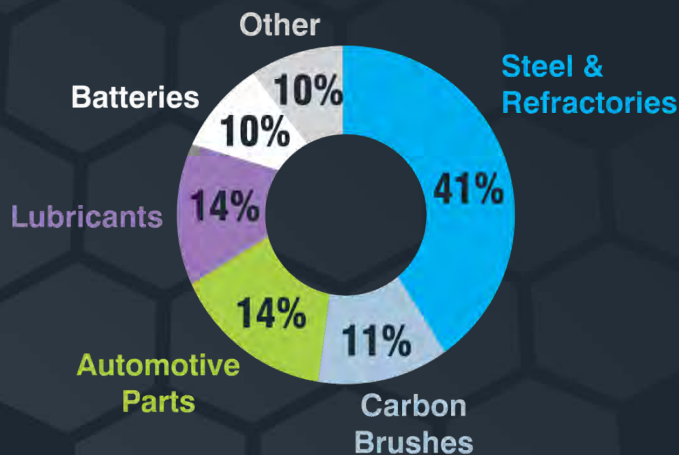


Supercapacitors



GRAPHITE USES

CURRENT GRAPHITE USEAGE



**SYNTHETIC
FLAKE
GRAPHITE**

VS

**NATURAL
FLAKE
GRAPHITE**

COST

**\$20,000 -
\$160,000/t**

**\$1,600 -
\$5,000/t**

CONDUCTIVITY

**LESS
CONDUCTIVE**

**MORE
CONDUCTIVE**

SMART & GREEN TECHNOLOGY USE

Lithium Ion Batteries



10-20 TIMES MORE
GRAPHITE THAN
LITHIUM USED



Pebble Bed Nuclear Reactors



A **1 GW** PEBBLE BED REACTOR **NEEDS**
3000 tonnes OF FLAKE GRAPHITE TO START UP
1000 tonnes OF FLAKE GRAPHITE TO OPERATE PER YEAR

Graphene



75% OF FLAKE GRAPHITE
WASTED IN CONVERSION
PROCESS

Supercapacitor Fuel Cells



80 kg OF FLAKE GRAPHITE USED
THE AVERAGE FUEL CELL
VEHICLE

LOW COST MODEL

Australia Operations

EXCELLENT **LOW COST** INFRASTRUCTURE



TRUCK TO
DEEP WATER
PORT

2.5 hours



STRONG DEMAND



RIGHT PRODUCT



WELL POSITIONED



LOW COST PRODUCER



\$\$\$\$\$\$

South Korea Operations

EXCELLENT **LOW COST** INFRASTRUCTURE



TRUCK TO
WORLD'S
LARGEST PORT

9 km

CLOSE PROXIMITY TO
BIGGEST BUYERS
IN THE WORLD



McIntosh Graphite Project Highlights

- ✓ JORC resource of 7.3M tonnes @ circa 5% TGC representing 20% of T1
- ✓ MOU with China Hengda for supply and processing – one of the only named deals on the ASX
- ✓ RC drilling and mapping confirms extensive flake graphite at targets 5 and 6
- ✓ New Black Rock EL at McIntosh has the potential for an additional 25 km strike length of graphitic schist horizons
- ✓ Metallurgy produces concentrate up to 99% with high purity free of deleterious elements independently verified to be of Li battery quality
- ✓ Scoping study underway



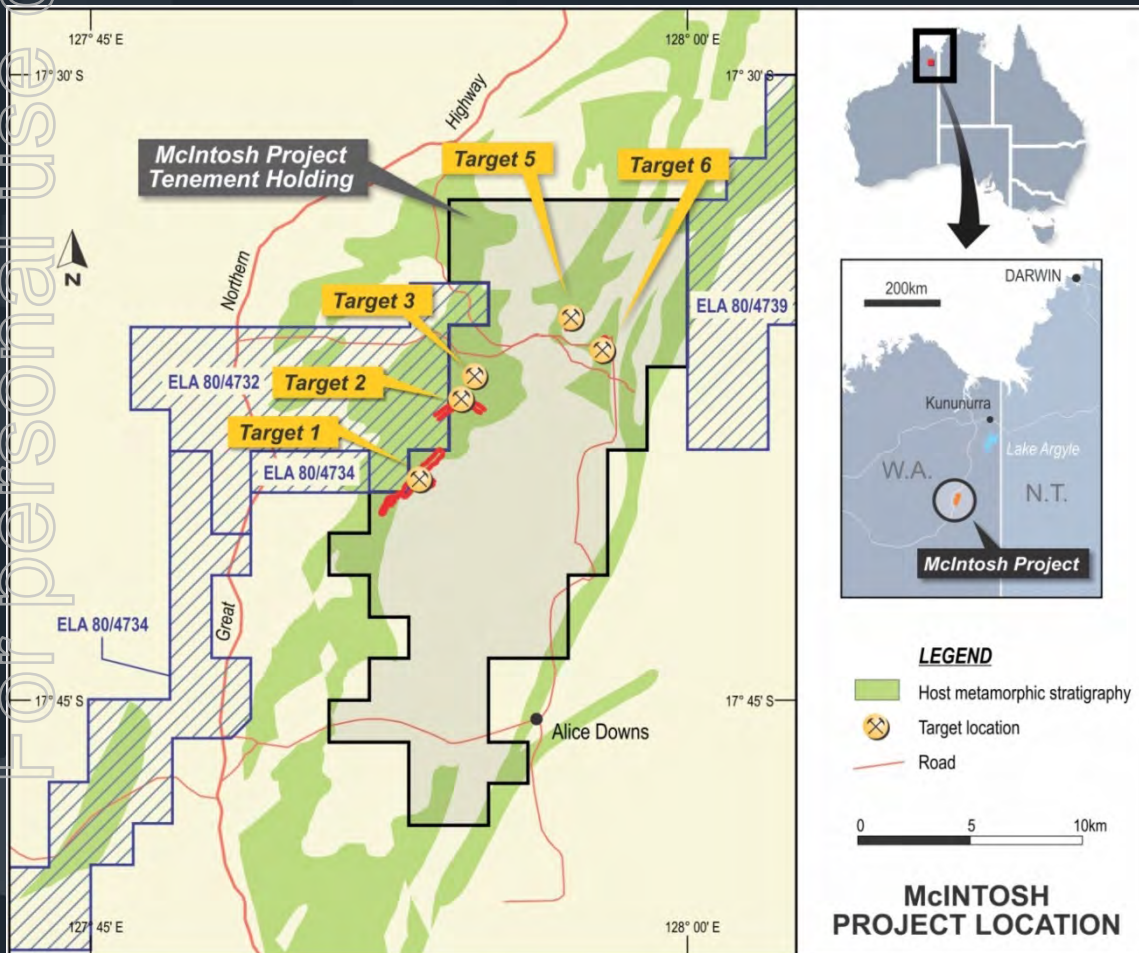


China Sciences Hengda Graphite Corp (CSHG)

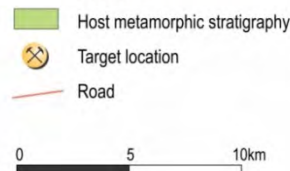
- ✓ LMB's MOU is one of small number of global graphite juniors with a commercial deal
- ✓ CSHGC is one of the world's largest pure high quality flake graphite businesses
- ✓ Supply arrangements 'marked to market' contract prices for high purity tech quality flake
- ✓ Processing and purification of future McIntosh output to be conducted by CSHG
- ✓ Collaboration on development work



McIntosh Graphite



LEGEND

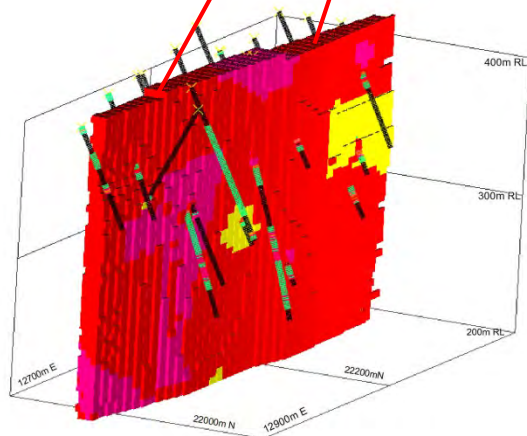
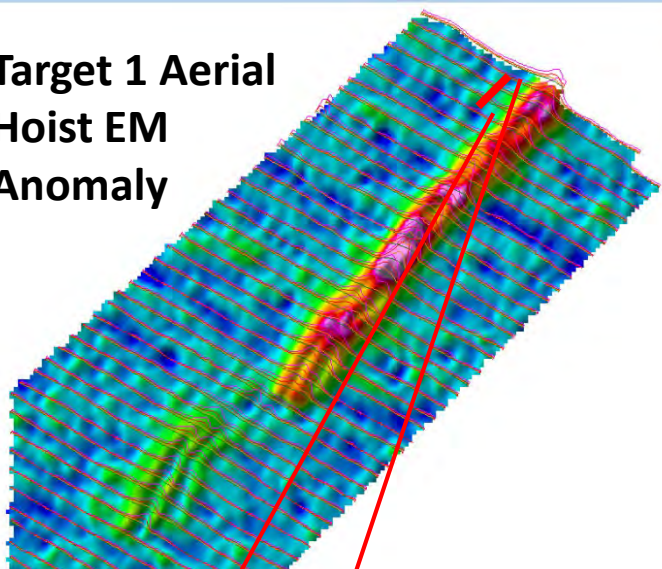


McINTOSH PROJECT LOCATION

- McIntosh graphite project showing the 5 main targets.
- Excellent project logistics – haul road access to Highway One (Great Northern Highway) and the port of Wyndham.

TARGET 1 - Resource

**Target 1 Aerial
Hoist EM
Anomaly**



Cell Grades TC%

- 6 - 10% TC
- 4 - 6% TC
- 2 - 4% TC

TARGET 1 - ESTIMATED INDICATED AND INFERRED JORC RESOURCE –

7.3m tonnes grading circa 5 TC%

Project Area	Ore Type	Resource Classification	Tonnes	Graphite (%TGC)	Contained graphite (tonnes**)
Target 1 Resource	Primary	Indicated	4,470,000	4.71	210,350
Upgrade	Oxide	Inferred	540,000	4.51	24,350
	Primary	Inferred	2,125,000	4.84	103,000
	Oxide + primary	Upgraded Resource	7,135,000	4.73	337,700
Target 1 Maiden Resource	Primary	Indicated	3,615,000	4.89	176,770
(ASX:LMB Ancmt April 2013)	Oxide	Inferred	350,000	5.03	17,600
	Primary	Inferred	1,359,000	4.93	67,000
	Oxide + primary	Initial Resource	5,323,000	4.91	261,370

* Resource modelling was undertaken with IMS mining software by Mr R.E Williams from Norvale Pty Ltd.

** Rounding of figures occurs during resource modelling under JORC.

McIntosh Flake Graphite: Near Surface Graphite Mineralisation at Target 1

For personal use only



LAMBOO RESOURCES

HOLE ID : T1 GDD 089

TRAY # 10

FROM 33.37

TO : 37.34

SCALE : 0 5 10 15 cms



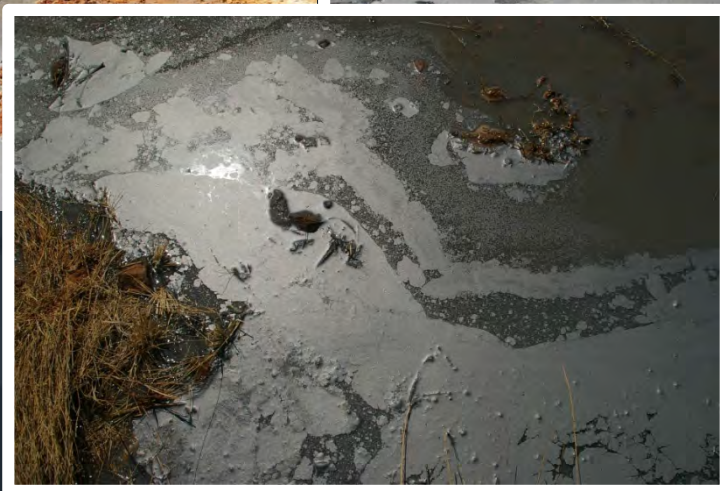
LAMBOO
RESOURCES

McIntosh Flake Graphite: Separation Evidence

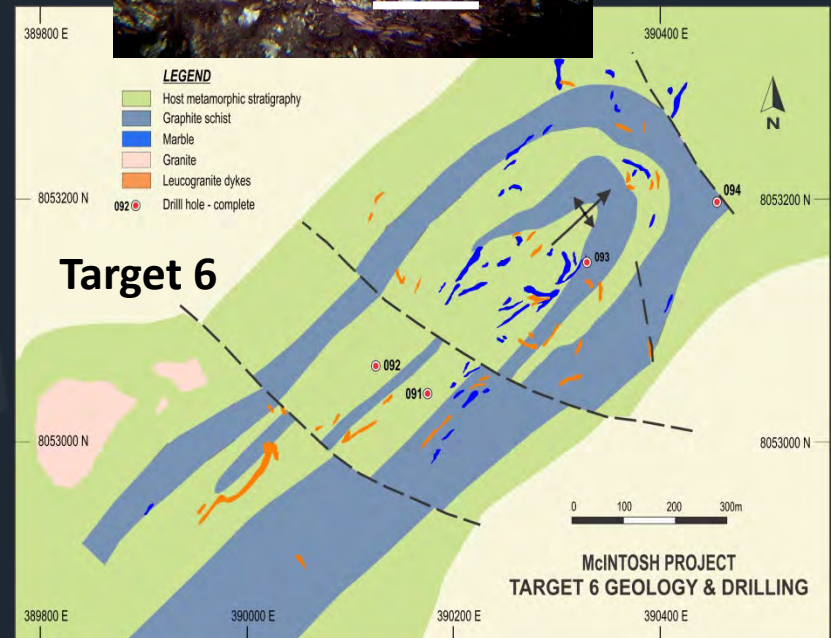
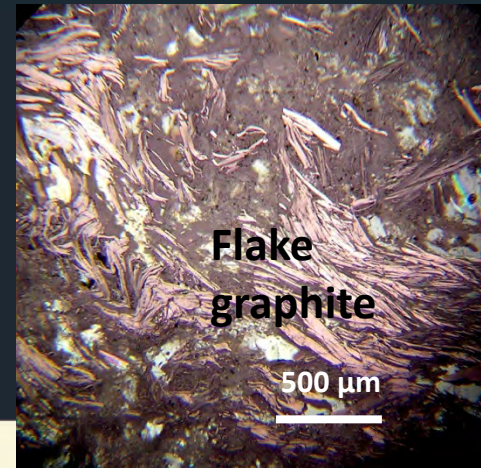
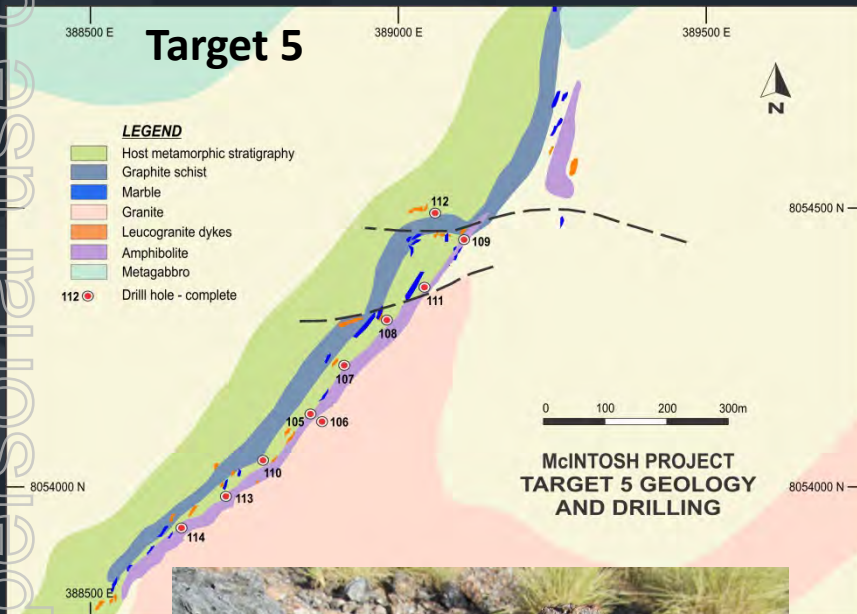


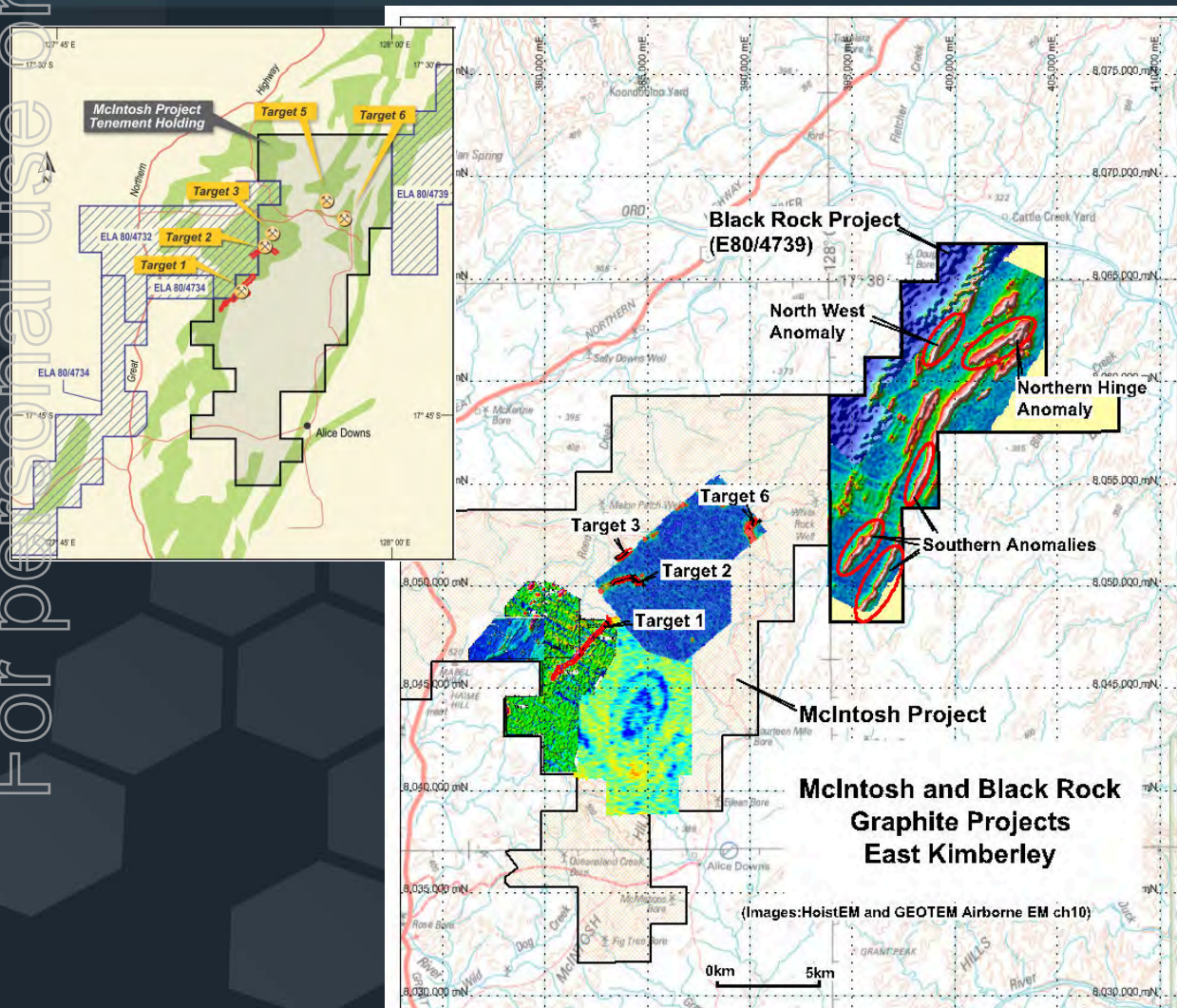
Ease of separation from host rock
shown by flake graphite floating
from water produced during drilling.

RC drilling at *Targets 1, 2 & 3* reveal
a schistose flake graphite that will
respond to standard metallurgical
extraction techniques.



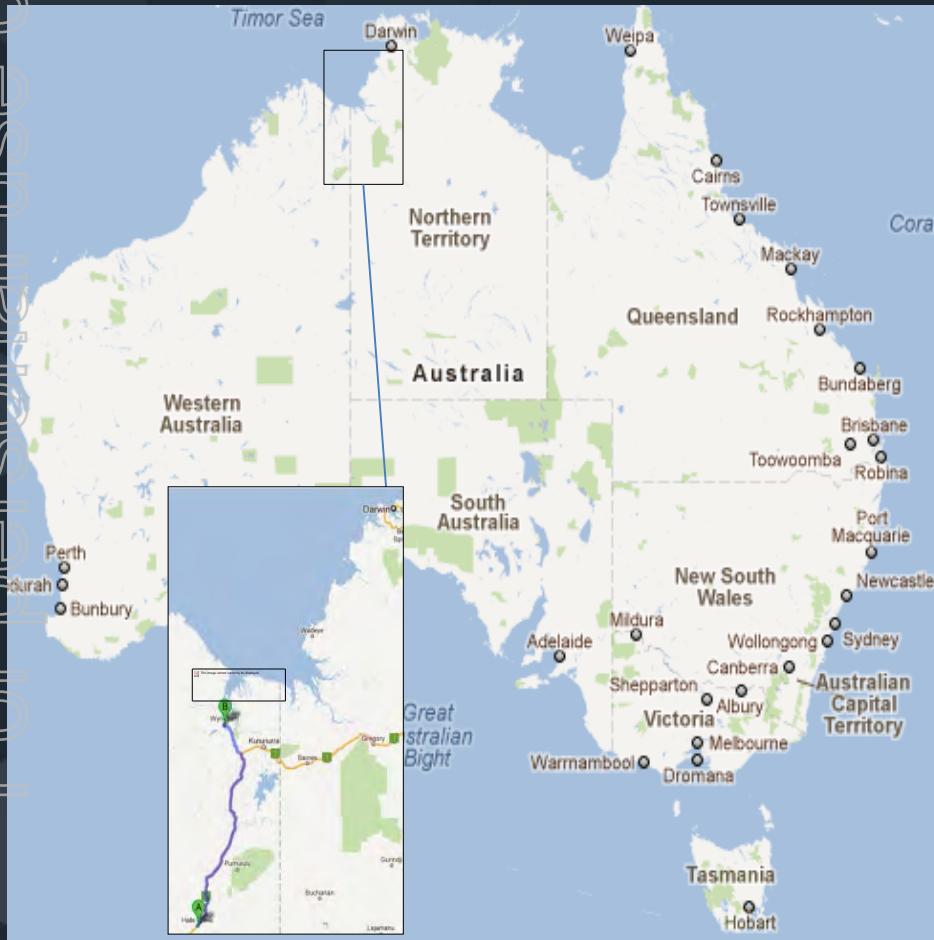
TARGETS 5 & 6 - Potential





- **Additional EM anomalies at Black Rock project indicate an additional 15 km of strong EM anomalies requiring exploration.**
- **Total strike length potential for flake graphite now in excess of 25 km.**

Infrastructure



- Port Wyndham is the only deep water port between Broome and Darwin and lies 280km from the McIntosh Project via the Great Northern Highway and has available capacity.





Metallurgy confirms high grade and purity

- ✓ All large to coarse flake
- ✓ High Concentrate grades up to 96.1% with XRD analysis confirming up to 99% crystalline graphite
- ✓ High purity free of deleterious elements
- ✓ Purity to the standard of Li batteries independently verified



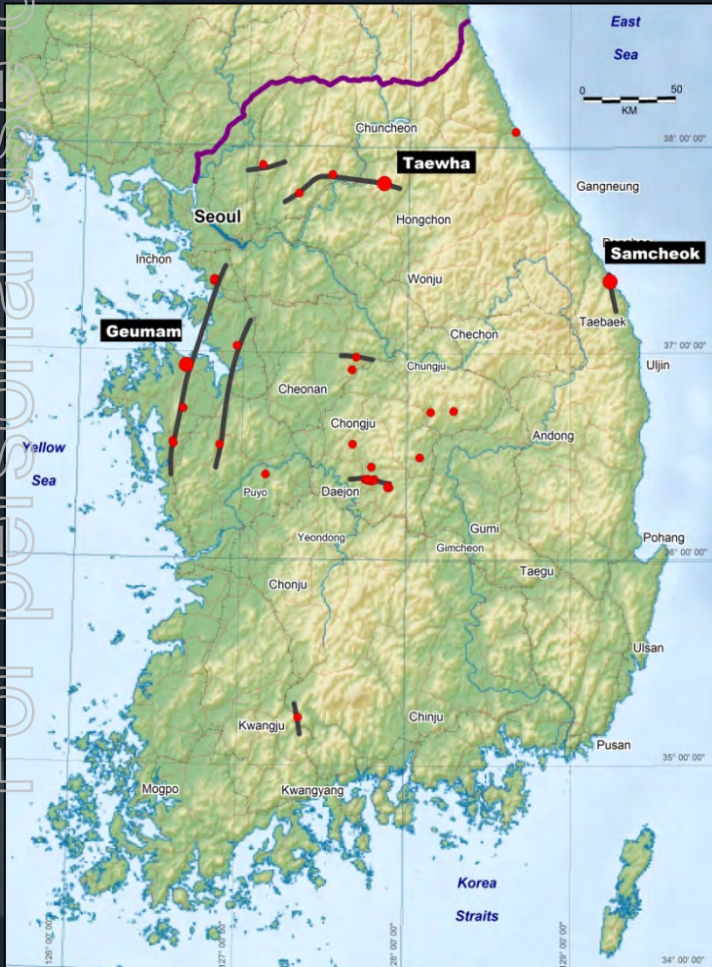


South Korea Graphite Highlights

- ✓ Existing inferred resource at Geumam Project with high grade surface channel samples up to 20m grading 18.9% TG. Aggregate exploration target – 17-28Mt grading 5 to 10%
- ✓ Outstanding intercepts of 54m, 44 and 35m
- ✓ Second phase drilling imminent to substantially increase existing resource
- ✓ Quality high purity flake graphite suitable for high end user market
- ✓ Lamboo joins prestigious Korean Institute of Carbon Convergence Council
- ✓ Excellent infrastructure
- ✓ Established route to market
- ✓ Low cost mining and processing expected



SOUTH KOREA - Projects



Geumam

- ✓ Initial Inferred JORC-code compliant resource of 200,000 tonnes @ 10% Cg
- ✓ Diamond drilling has commenced - now awaiting complete assays

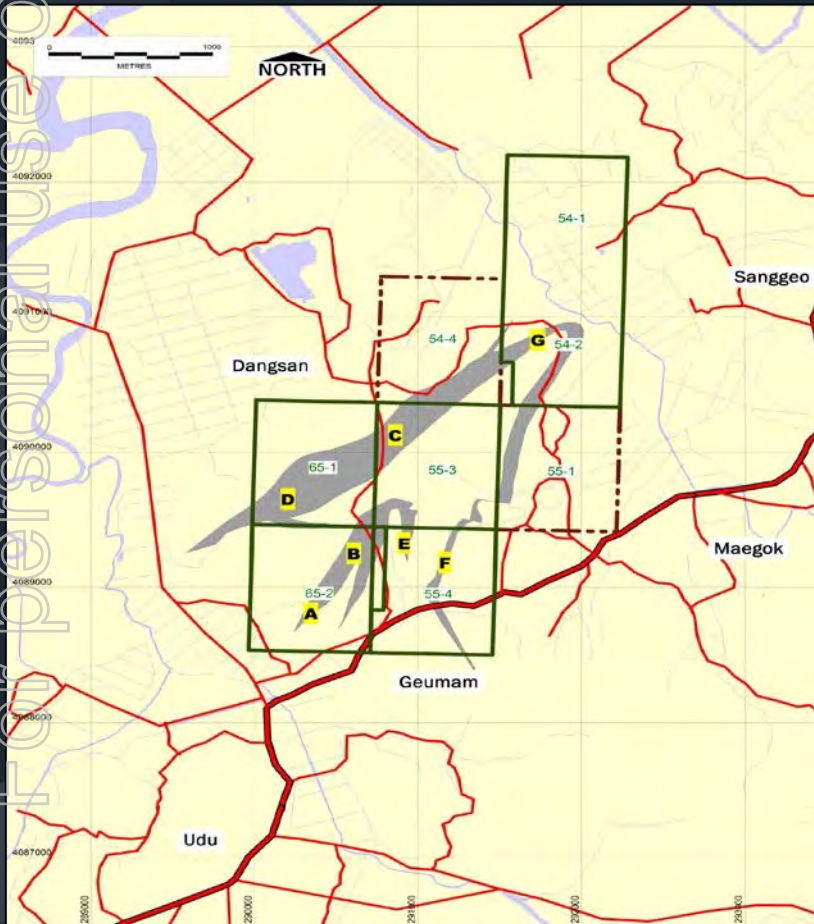
Taewha

- ✓ Initial Inferred JORC-code compliant resource of 170,000 tonnes @ 6.8% Cg

Samchoek

- ✓ Initial Inferred JORC-code compliant resource of 200,000 tonnes @ 4.8% Cg

SOUTH KOREA - Projects



Geumam Project offers:

- Close proximity to the largest markets for graphite in North Asia (China, Japan and South Korea).
- South Korea has a significant geopolitical advantage in the North Asian region, where it acts as a “middleman” to overcome cultural and historical differences.
- Minimal transportation freight costs.
- A premium is placed on new mines in stable, safe countries with low sovereign risk for investment.
- Demand for flake graphite is expected to grow in North Asia at a higher rate than any other region over the next 5 years.
- *Samsung* is funding leading research into graphene and commercialising its applications.

LAMBOO GRAPHITE SUMMARY

- ❑ JORC Resource for Target 1 flake graphite WA project at McIntosh. Further drilling confirms potential for continued significant resource upgrade. Targets 5 and 6 contain coarse flake graphite
- ❑ South Korean graphite projects are all former graphite producing mines with significant resource growth upside. These projects give Lamboo direct access to the world's largest flake graphite end user market complimented by superior and established infrastructure
- ❑ Metallurgy confirms potential to produce high quality pure flake graphite
- ❑ Goal for Australian and/or South Korean projects targeting pilot production by late 2014 - 2015

Advanced Particle Group

- ❑ Lamboo establishes commercial arm 'Advanced Particle Group' (APG) to exploit new technology applications of flake graphite within the fields of graphene, pebble bed technology and lithium ion batteries
- ❑ APG partnering with Monash University using their materials science expertise
- ❑ Potential grant funding of up to \$5 million from sources including Singapore government based organisations
- ❑ Further collaboration arrangements in negotiation internationally

LAMBOO CONTACTS



Managing Director and CEO

Richard Trevillion

0412 307 807

richard@lambooresources.com.au

Technical Director

Dr Craig Rugless

(08) 9301 1047

craig@lambooresources.com.au

Investor Relations

Ken Banks

0402079999

kbanks@bigpond.net.au