



. . . developing high purity flake for new technologies

Lamboo Resources Pathway to Production and Revenues

February 2015



. . . developing high purity flake for new technologies

Investment in Lamboo Resources Limited ("Lamboo" or the "Company") is subject to investment risk, including possible loss of income and capital invested. Neither Lamboo, nor any other member company of the Lamboo Group, nor any director, officer or employee guarantees any particular rate of return or performance, nor do they guarantee the repayment of capital.

The presentation may contain forward-looking statements regarding the potential of the Company's revenues, projects, interests and the development potential of the Company's business. Any statement describing a goal, expectation, intention or belief of the Company is a forward-looking statement and should be considered an at-risk statement. Given these risks, readers are cautioned not to rely on forward-looking statements. Actual results could differ materially from those anticipated in these forward-looking statements due to many important factors, risks and uncertainties including, without limitation, risk associated with product sales, development and manufacture, risks inherent in the business, future capital needs, general economic uncertainty and other risks detailed from time to time in the Company's announcements to the ASX.

Summary



DRIVEN BY CUSTOMER material requirements



LOGISTICS for market access **SUPERB**



ACCESS TO NICHE TECH markets which are not driven by price sensitivity but function

Corporate Snapshot

Directors

Neville Miles – Non-Executive Director / Interim Chairman

- COO Invicara
- Formerly Senior Manager at Siemens

Richard Trevillion – Managing Director / CEO

- Formerly a director at CloseBrothers (M&A/ECM/Corporate Finance), London
- Formerly a solicitor at Simmons & Simmons, London
- Founder with considerable ASX experience

Tony Cormack – Executive Director / Head of Operations

- Head of Operations
- Formerly Resource Development Manager at Atlas Iron Ltd

Alvars Lee – Non-Executive Director

- Former Investment Banker with Schroders and Daiwa
- Specialist in Asian Capital markets

Graphite Facts

Types of Graphite



LUMP



AMORPHOUS



FLAKE



Low purity flake graphite **cannot be used** in the production of most **new technologies**



HIGH PURITY
CRYSTAL
FLAKE
GRAPHITE

HIGH PURITY FLAKE GRAPHITE IS IN
VERY **LIMITED** SUPPLY

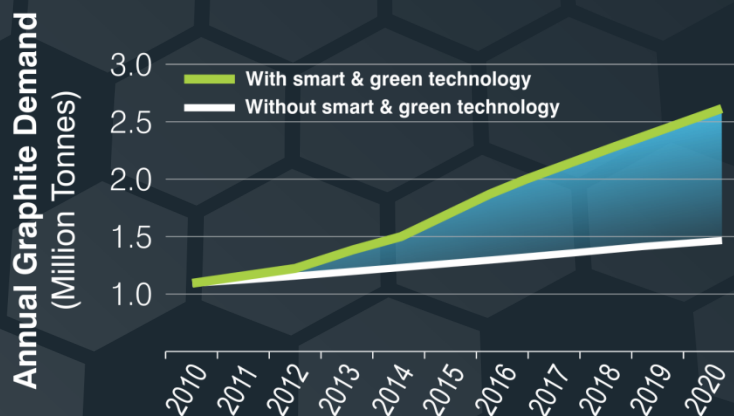
LAMBOO'S GRAPHITE CONFIRMED AS
HIGH PURITY FLAKE

ONLY HIGH PURITY FLAKE
CAN BE USED IN THE PRODUCTION
OF THESE **NEW TECHNOLOGIES**

Graphite Market

GRAPHITE DEMAND A
\$12 BILLION
MARKET

GLOBAL GRAPHITE DEMAND



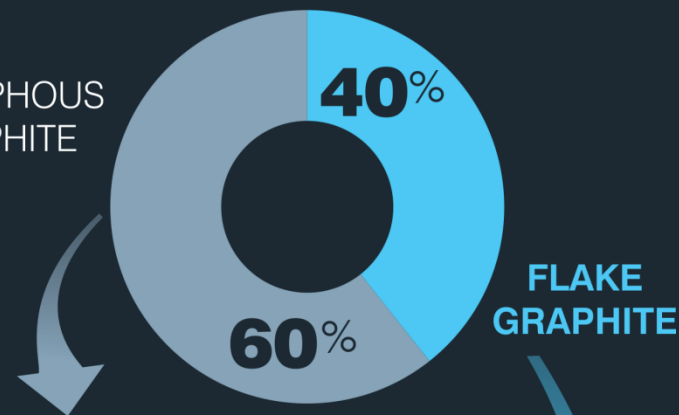
DEMAND FOR
FLAKE GRAPHITE
TO INCREASE BY

11%
pa

DRIVEN BY
SMART & GREEN
TECHNOLOGY

SUPPLY

AMORPHOUS
GRAPHITE



FLAKE
GRAPHITE

CHINA CURRENTLY
PRODUCES ABOUT
90% OF THE
WORLD'S
GRAPHITE

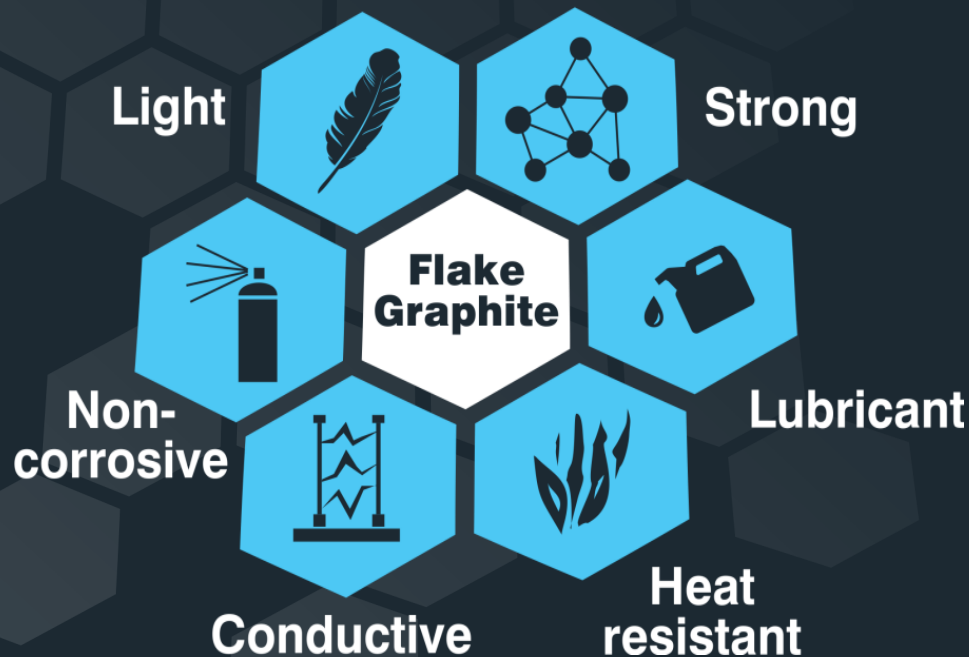
- Low-carbon amorphous
- Diminishing flake reserves
- Declining production

\$

LOWEST SUPPLY
HIGHEST PRICE

Graphite Facts

FLAKE GRAPHITE PROPERTIES



WORLDWIDE DEMAND TO
INCREASE
80% IN SEVEN
YEARS

New **Green Technologies**
driving demand



Lithium Ion Batteries



Pebble Bed
Nuclear Reactors



Graphene



Supercapacitors

Positioning for Growth Markets

- **Market for Lithium-ion batteries** expected to **Grow 4X** by 2020.

(Source: Renewable Energy World, September 2014)

- **Number of EV's in China** to **surge by 300%** by end 2015.

(Source: CIMB China EV boom report, May 2014)

- **EV population in China** to **grow at 83% pa** through to 2020.

(Source: CIMB)

- **Demand for Lithium-ion EV batteries in China** to grow by 240% through 2014 to 2015

(Source: CIMB)

**LAMBOO
RESOURCES**

& Technology

LAMBOO'S AIM IS TO ACHIEVE
LONG TERM FLAKE GRAPHITE PRODUCTION



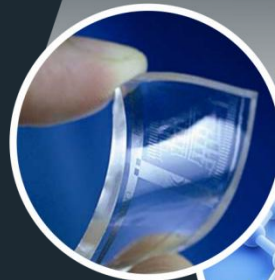
Lithium Ion Batteries



**Pebble Bed
Nuclear Reactors**



Graphene



Supercapacitors



Lamboo Now

LAMBOO RESOURCES & **TECHNOLOGY**

LAMBOO IS PREPARING FOR
LONG TERM **HIGH PURITY FLAKE**
GRAPHITE PRODUCTION

LOW COST MODEL
LOW COST INFRASTRUCTURE

Australia Resources



TRUCK TO
DEEP WATER
PORT **2.5** hours

South Korea Resources



TRUCK TO
ONE OF **ASIA'S**
LARGEST PORTS **9**km
CLOSE PROXIMITY TO
BIGGEST BUYERS
IN THE WORLD

LAMBOO FLAKE GRAPHITE and **Lithium-Ion Batteries**



10-20

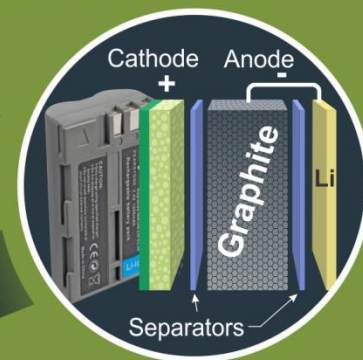
TIMES MORE
GRAPHITE
THAN LITHIUM
IN A LI BATTERY



LAMBOO'S **HIGH PURITY**
FLAKE GRAPHITE



PROVEN
COMPATIBLE IN



LITHIUM-ION
BATTERY PRODUCTION

Strategy

McIntosh, Western Australia

- Heritage Clearance Survey planned for Q1 2015
- Environmental Studies and Regulatory Approvals progressing
- Resource of **7.13Mt @ 4.73% TGC** at Target 1, combined with Exploration Target Estimate of **80 – 127 Mt @ 2.5 – 6.0% TGC** to underpin an expanded scoping study conducted by CSA Global due in Q1 2015
- Mining Lease Application (MLA) Q2 2015
- Priority drilling at Targets 5 and 6 for maiden JORC compliant resources, aiming for a combined resource in the range of 20-30Mt in Q3 2015
- Pilot exploration drilling program planned for Targets 3 and 4 to test grade and quality of mineralisation in Q3 2015

Strategy

Geumam, South Korea

- Resource upgrade for Area C and Area E due in the Q2 2015
- Scoping Study due in Q2 2015
- Mining Licence already in place.

Marketing

- Currently 2 binding off-take agreements
- Further commercial agreements being negotiated
- Marketing strategy for flake graphite products progressing

Research and Development Activities

- Ongoing work with graphene and membrane technologies reporting in H1 2015

Expected News Flow

McIntosh, Western Australia

- McIntosh Expanded Scoping Study Q1 2015
- McIntosh Mining Licence Application Q2 2015
- Update on Heritage and Environmental Studies Q2 2015

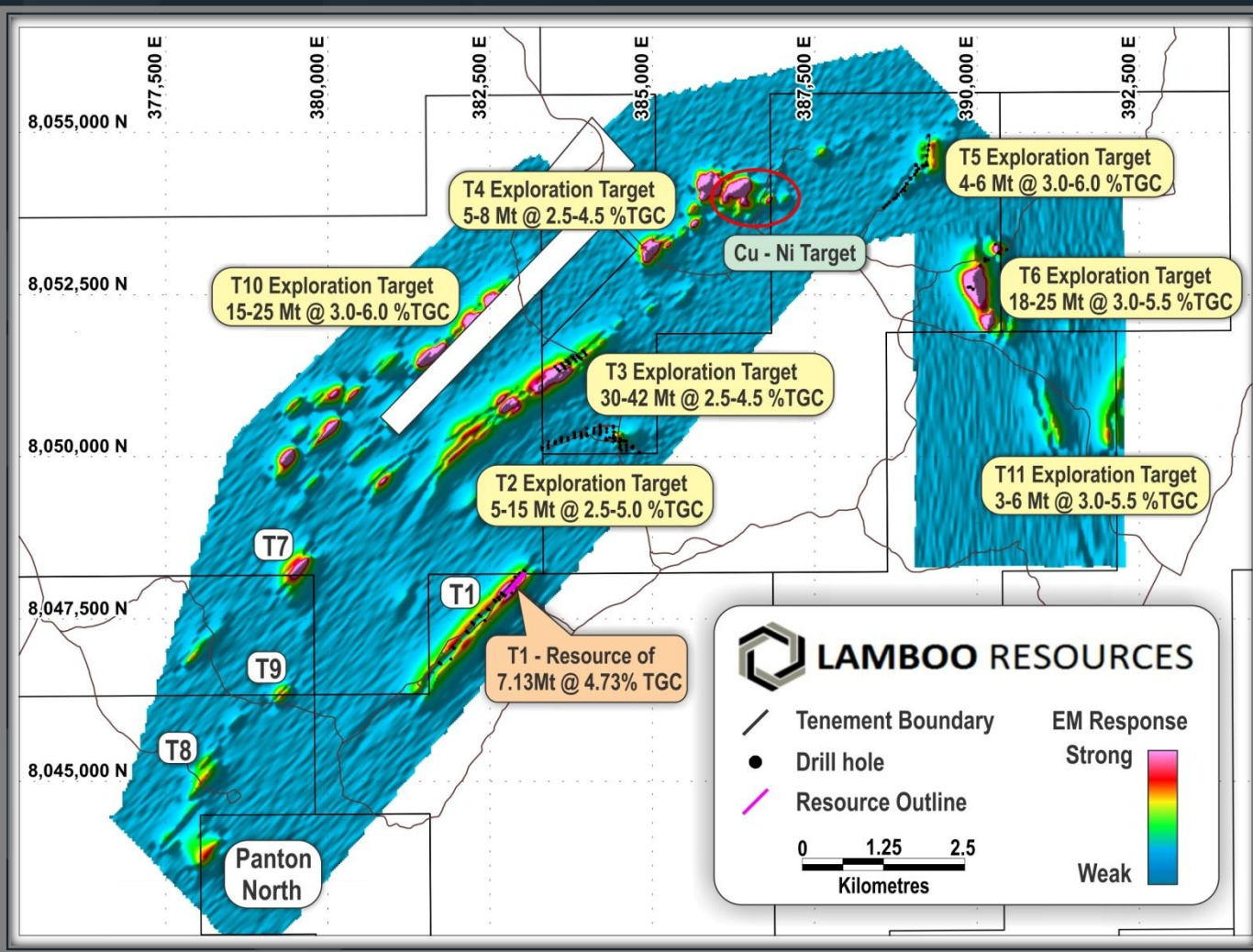
Geumam, South Korea

- Korea Project Update Q1 2015
- Resource Upgrade for Area C and Area E Q2 2015
- Geumam Scoping Study Q2 2015

Corporate

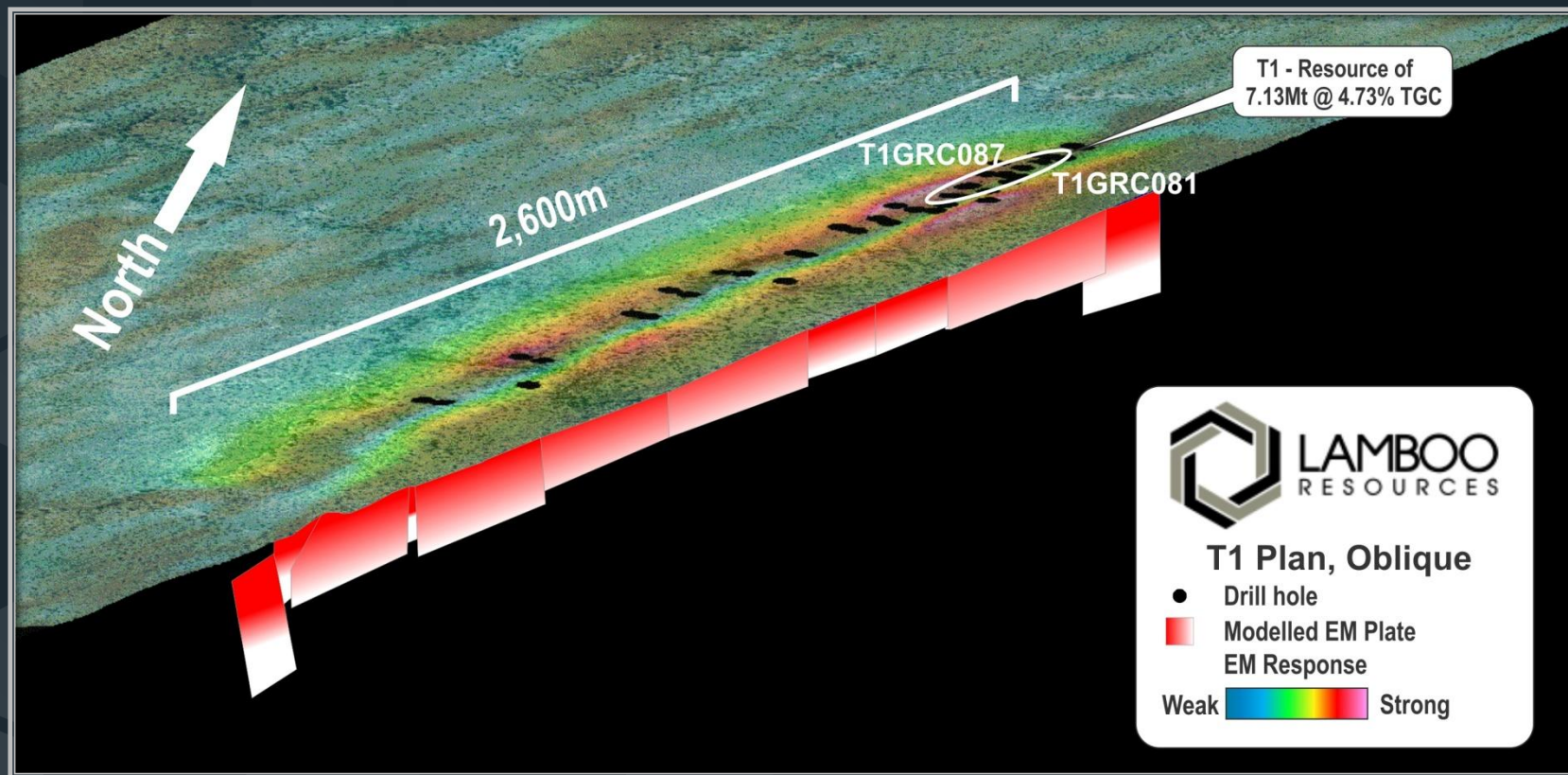
- Corporate Update Q1 2015
- Additional partners H1 2015

McIntosh Flake Graphite Project



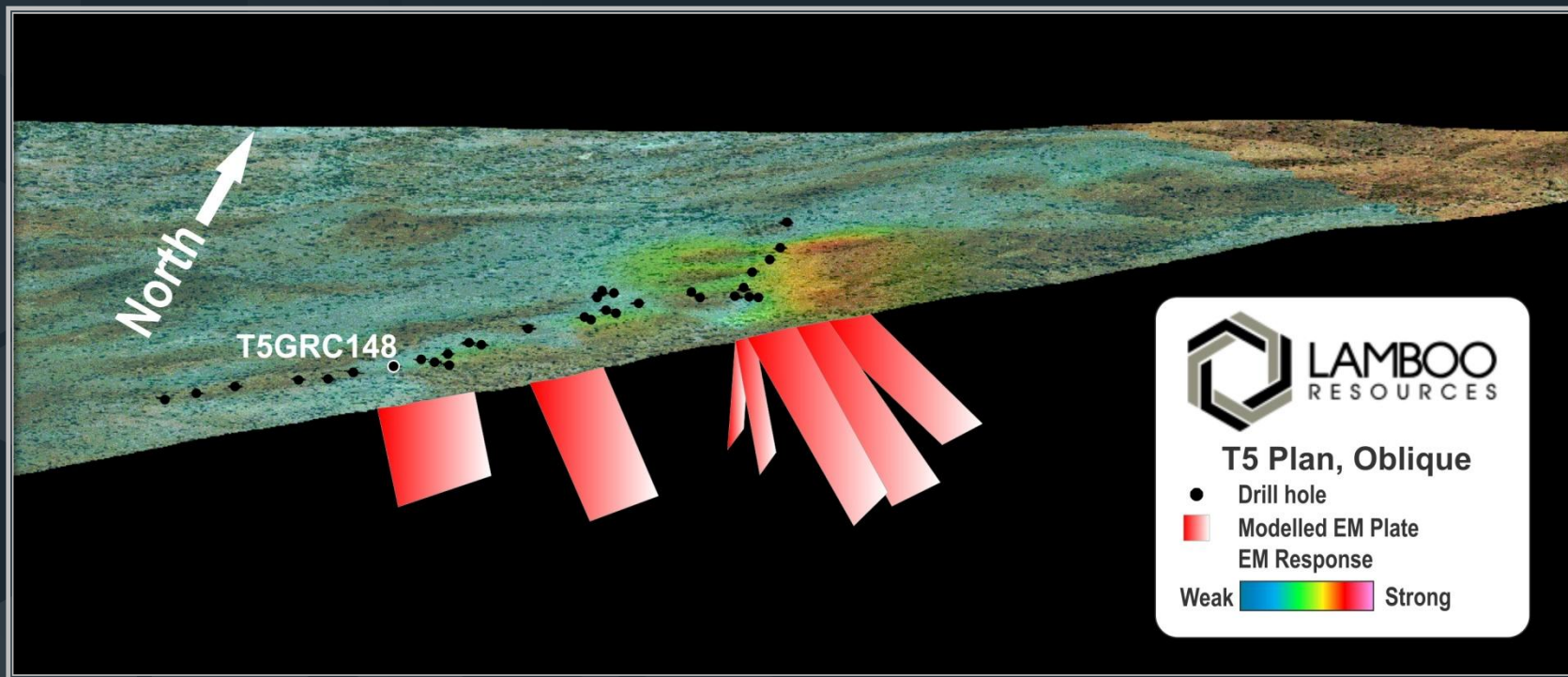
- JORC 2012 compliant resource of **7.13Mt @ 4.73% TGC**
- 12 High Priority Targets identified by VTEM Supermax Survey
- Exploration Target Estimate of **80 – 127 Mt @ 2.5 – 6.0% TGC** across 7 Target areas

McIntosh Target 1



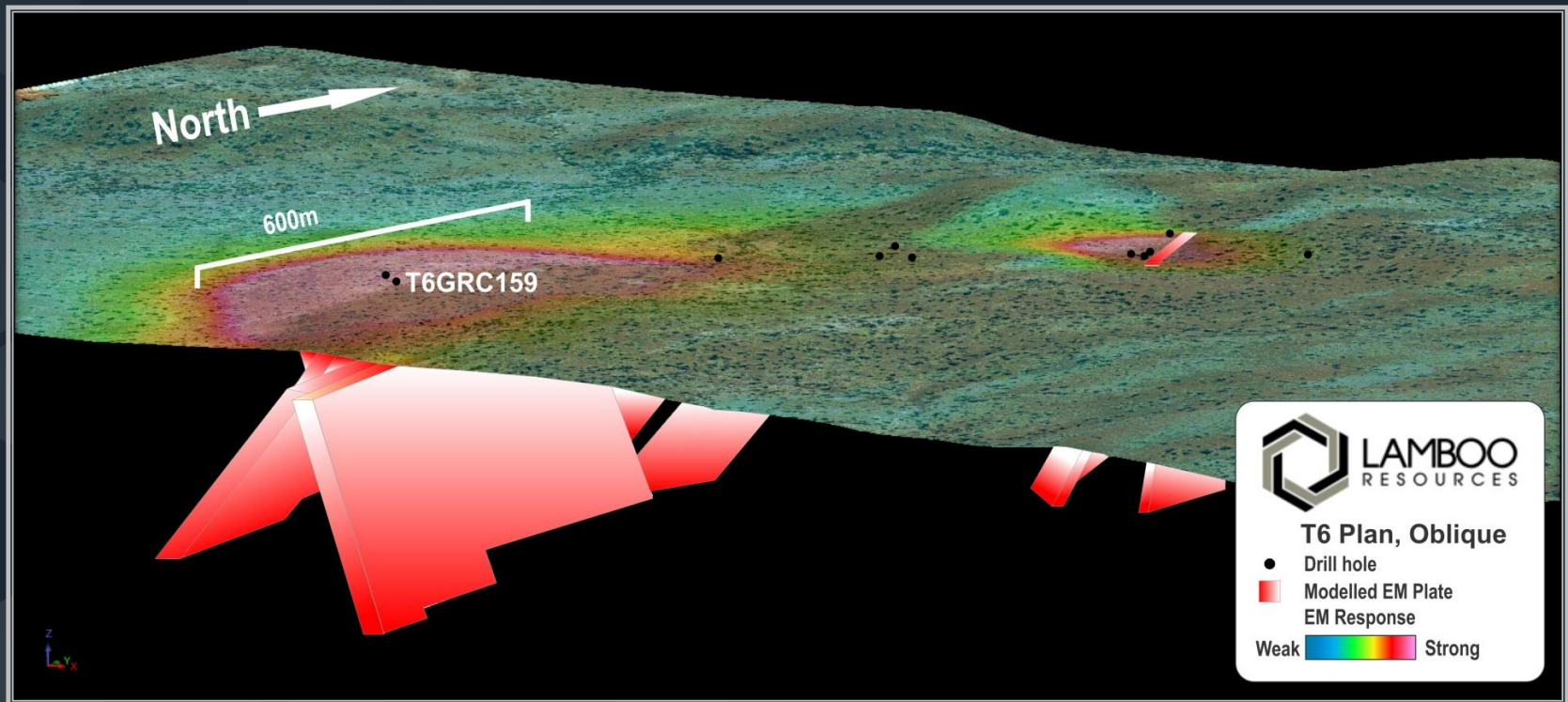
- JORC 2012 compliant resource of 7.13Mt @ 4.73% TGC
- Resource comprises approximately 20% of the strike length potential
- Strong conductance values of >300S from VTEM survey

McIntosh Target 5



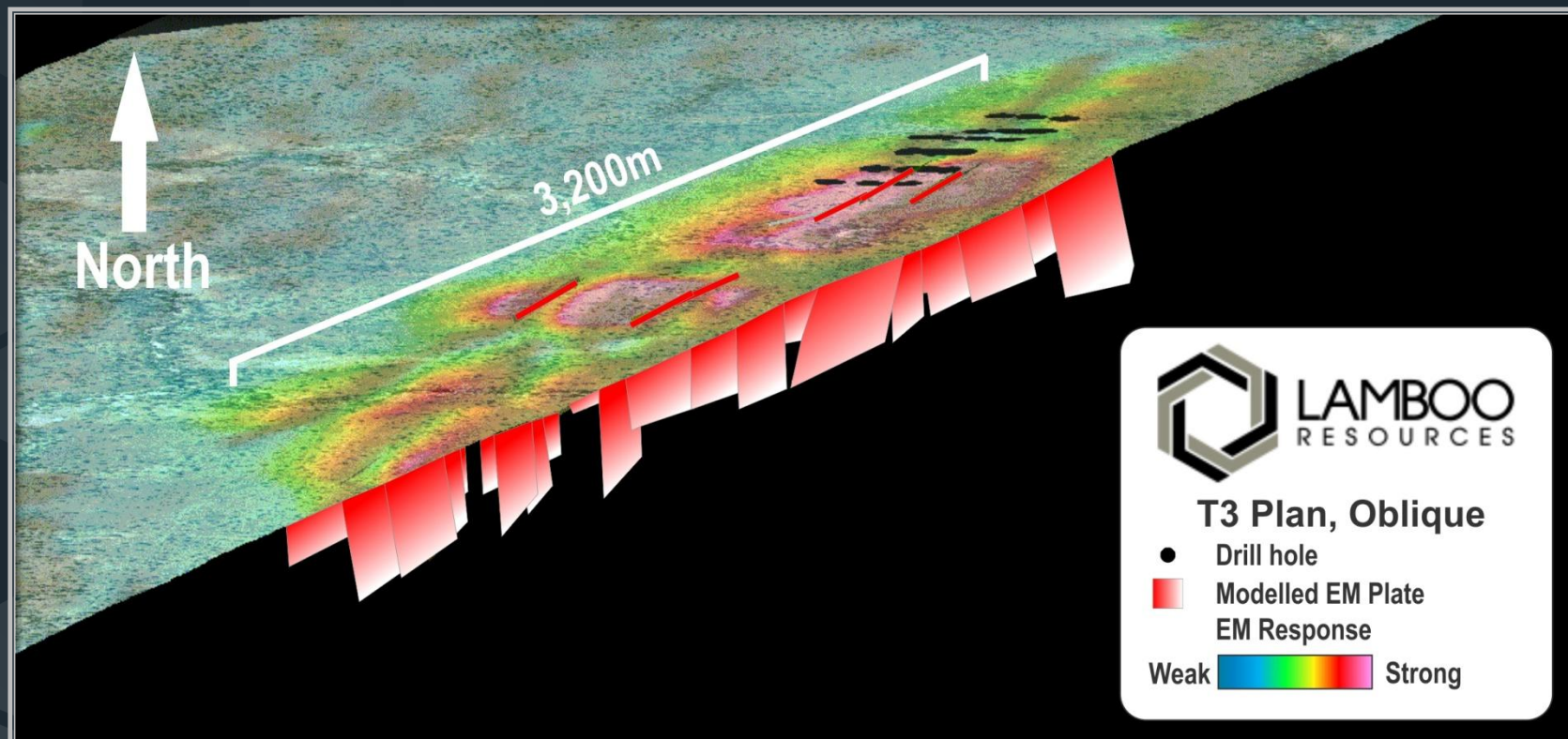
- Exploration Target Estimate of 4 – 6 Mt @ 3.0 – 6.0% TGC
- Strike length potential in excess of 1 kilometre
- Thickening of the graphitic schist unit associated with regional folding
- Largest flake size of 500µm (jumbo flake) recorded at Target 5

McIntosh Target 6



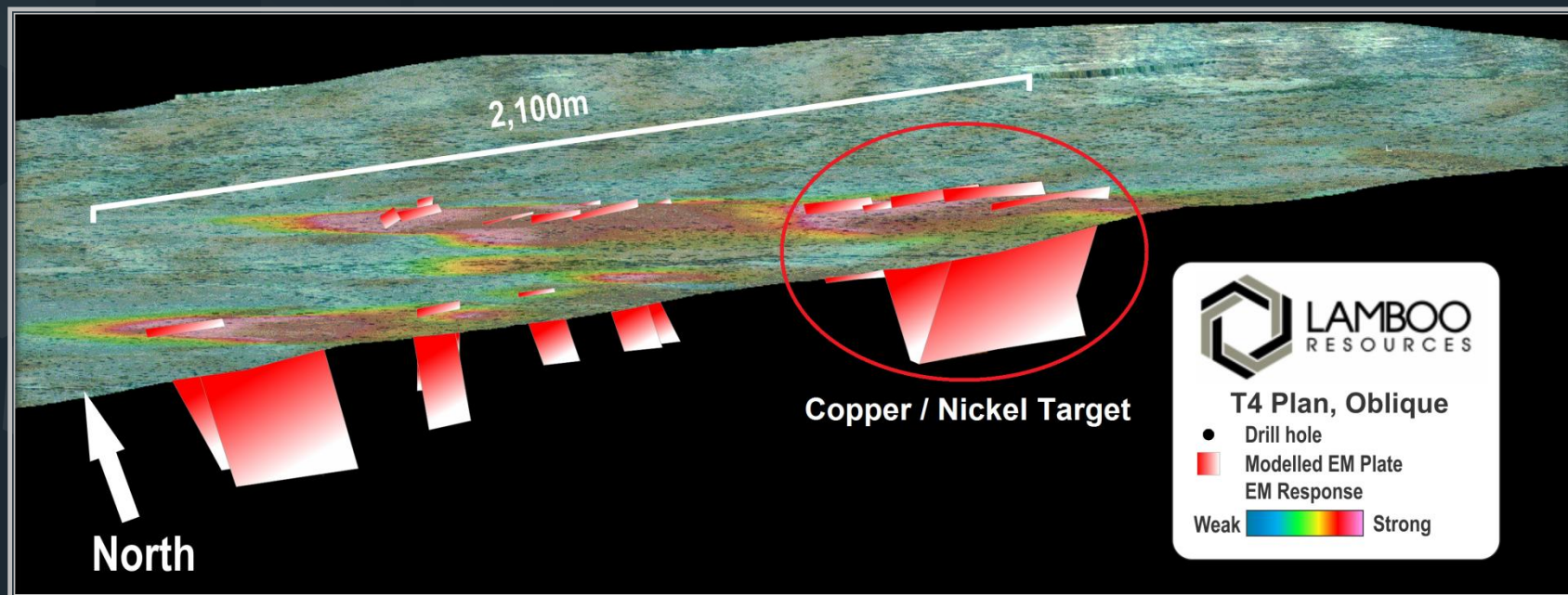
- Exploration Target Estimate of **18 – 25 Mt @ 3.0 – 5.5% TGC**
- Strike length potential in excess of 1.5 kilometres
- Highest grades to date (18.10%TGC) with jumbo flake recorded
- Outcropping graphitic schist with thickening of the graphitic schist unit associated with regional folding

McIntosh Target 3



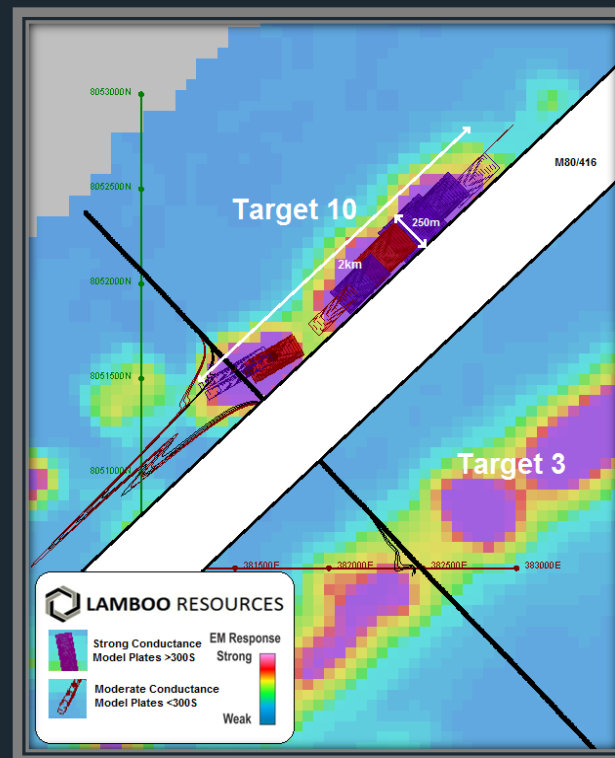
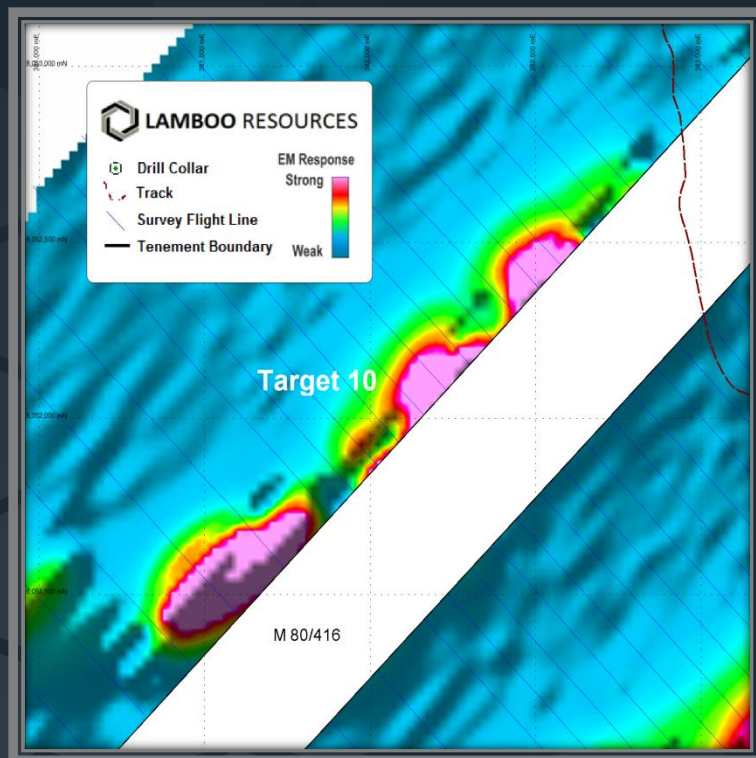
- Exploration Target Estimate of 30 – 42 Mt @ 2.5 – 4.5% TGC
- Strike length potential in excess of 3 kilometres
- Strong conductance values of >300S from VTEM survey
- Thickening of the graphitic schist unit associated with regional folding

McIntosh Target 4



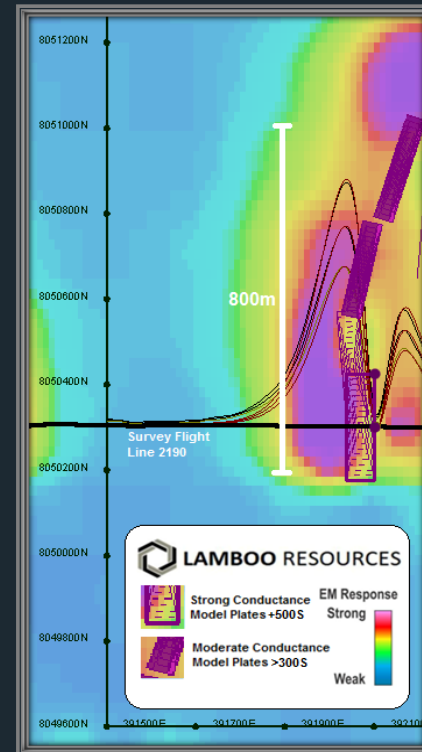
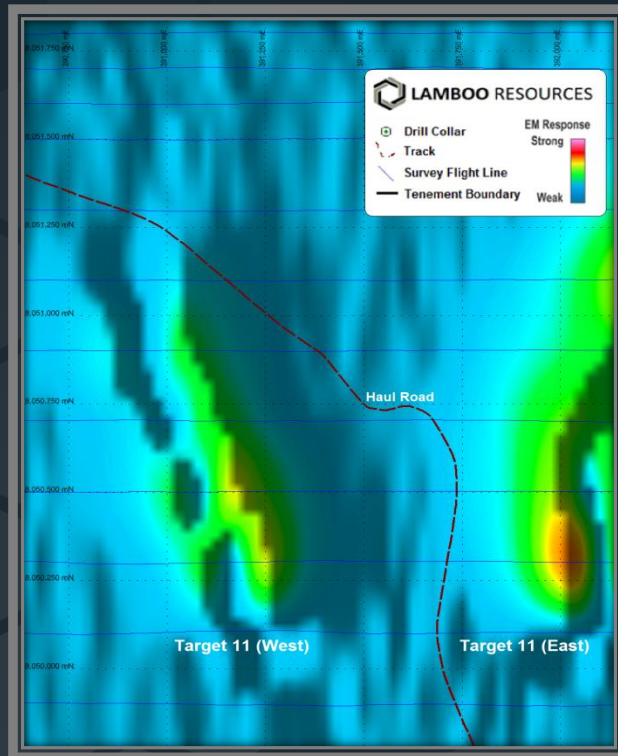
- Exploration Target Estimate of 5 – 8 Mt @ 2.5 – 4.5% TGC
- Strike length potential in excess of 2 kilometres
- Very high conductance levels at >750S from VTEM Survey
- Strong potential for Copper / Nickel mineralisation (see figure above)
- Significant historical soil geochemistry / rock chip assays

McIntosh Target 10



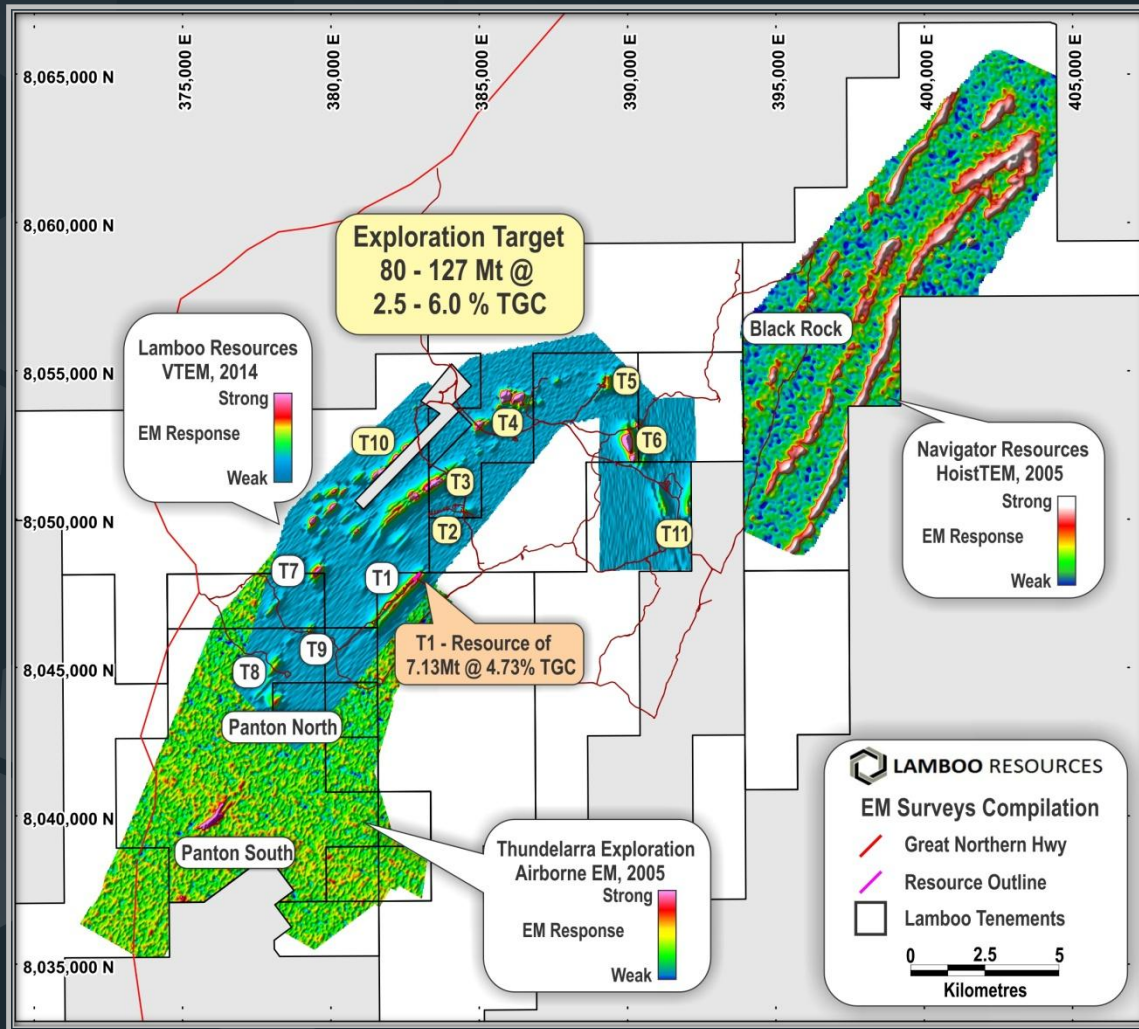
- Exploration Target Estimate 15 -25 Mt @ 3.0 – 6.0% TGC
- Strike length potential in excess of 2 kilometres
- High conductance levels between 200S and +700S
- Well suited to open pit operation

McIntosh Target 11



- Exploration Target Estimate of 3 – 6 Mt @ 3.0 – 5.5% TGC
- Strike length potential in excess of 800 metres
- High conductance levels in excess of >500S
- Alongside existing haul road only 19 km from the Great Northern Hwy

McIntosh Exploration



- Additional EM anomalies at the Black Rock and Panton projects add an additional **35 km** of strike.
- Total of **50 km** strike length potential for flake graphite at the combined McIntosh tenement package.

McIntosh Metallurgy



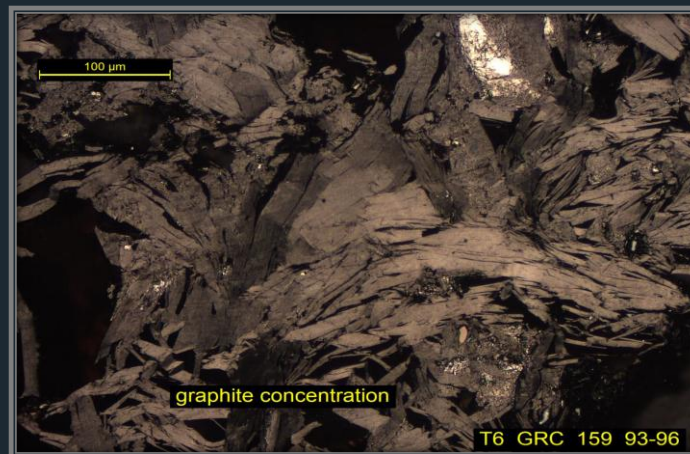
Target 1 rock chip sample (382802mE ; 8047962mN)



Target 5 RC drill hole sample (T5GRC117 6m - 7m)



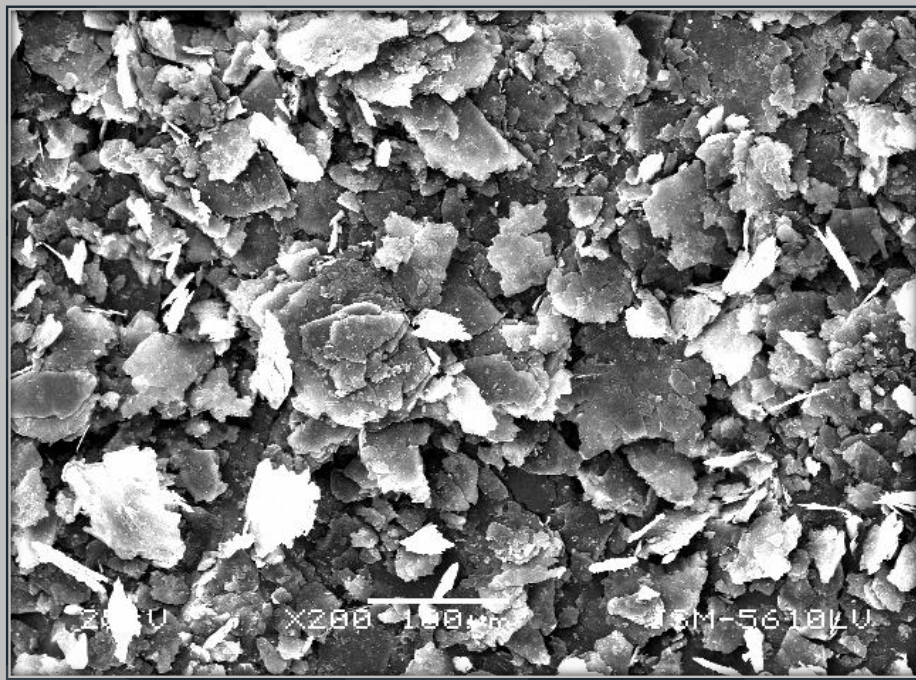
Target 6 RC drill hole sample (T6GRC93 74m - 76m)



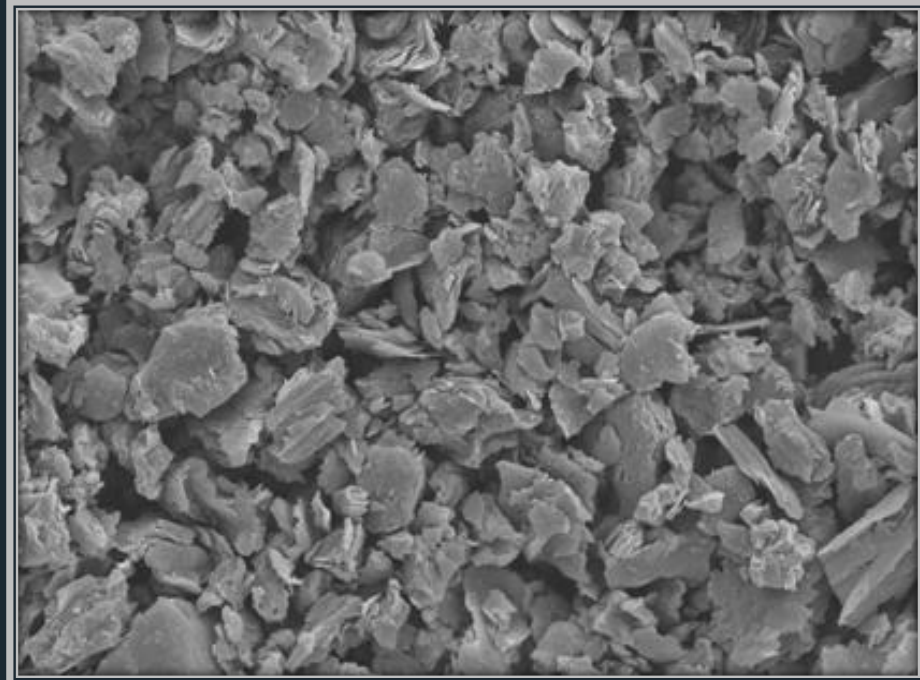
Target 6 RC drill hole sample (T6GRC159 93m - 96m)

McIntosh Metallurgy

Scanning Electron Microscopy McIntosh Flake v Market Leaders Synthetic Flake



**McIntosh Flake Graphite
Concentrate – Target 6
(90.5% TGC)**

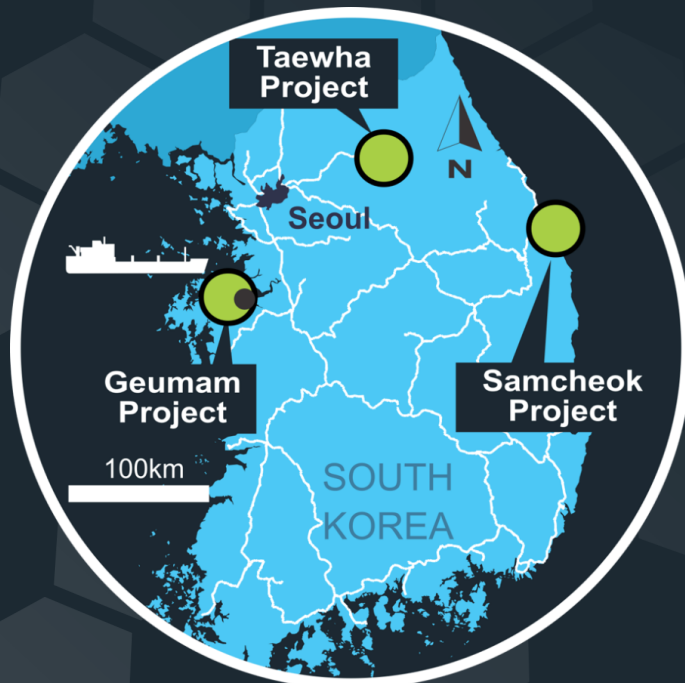


**Competitors Synthetic Flake Graphite
Concentrate (90.1% TGC)**

McIntosh Timetable

	Status	Start	Finish
McIntosh VTEM Supermax Survey	✓	Sept 14	Oct 14
VTEM Supermax Survey 3D interpretation - SGC	✓	Nov 14	Jan 15
Exploration Target Estimates – CSA Global	✓	Jan 15	Feb 15
Expanded Scoping Study – CSA Global		Feb 15	March 15
Resource Drilling at Targets 5 and 6 (20 – 30Mt)		April 15	June 15
Exploration Drilling at Targets 3 and 4		June 15	Aug 15

South Korea Assets



Geumam

- Indicated / Inferred resource of **5.5Mt @ 5.4% Cg** for **296,000t** contained graphite.
- Diamond drilling completed returning thick intersections expected to add significantly to the resource base.
- Close proximity to major customers within South Korea.

Taewha

- Inferred resource of **170,000 tonnes @ 6.8% Cg**

Samchoek

- Inferred resource of **200,000 tonnes @ 4.8% Cg**

Geumam Timetable

	Status	Start	Finish
Phase 1 Drilling Program	✓	Oct 13	Nov 13
Phase 2 Drilling Program	✓	Mar 14	Aug 14
Maiden Resource Estimate at Area B	✓	June 14	Aug 14
Maiden Resource Estimate at Area C and Area E		Feb 15	Apr 15
Geumam Scoping Study		Mar 15	May 15

Lamboo's Partners

- **LAMBOO**
One of a small number of global graphite juniors with more than 1 commercial deal, a number that's likely to increase
- **CHINA SCIENCES HENGDA GRAPHITE COMPANY (CSH)**
Is a leading processor of flake graphite who have successfully processed LMB's flake producing a high purity concentrate during testwork
- **CSH SUPPLY AGREEMENT**
50,000 tonnes per annum at market contract prices for high purity, tech quality flake with price to be no less than \$2,000 per tonne
- **CHINA RAIL CORPORATION (CR)**
Is a fortune 500 company seeking supply of flake and processed materials for renewable energy markets
- **CR SUPPLY AGREEMENT**
50,000 tonnes per annum at market contract prices

Conclusion



OPERATIONAL FOCUS **on reaching** near term production



POSITIONED **to meet the** market demands **of the** LITHIUM ION BATTERY AND TECHNOLOGY **markets**



DEVELOPING CAPABILITIES **in new markets such** **as** solid state materials and graphene

Corporate Information & Contacts

LAMBOO RESOURCES LIMITED

ABN 27 099 098 192

ASX: LMB

CORPORATE OFFICE

Level 6, 344 Queen Street
Brisbane QLD 4000

OPERATIONS OFFICE

Unit 2, 7 Packard Street
Joondalup WA 6027
Telephone: +61 8 9301 1047

WEBSITE

www.lambooresources.com

CEO

Richard Trevillion
0412 307 807
richard@lambooresources.com

HEAD OF OPERATIONS

Tony Cormack
0427 349 451
tony@lambooresources.com

INVESTOR RELATIONS

Ken Banks
0402 079 999
kbanks@bigpond.net.au



... developing high purity flake for new technologies

Competent Persons Statements – Western Australia

Information in this “Company Presentation” relating to Exploration Results and geological data at the McIntosh Project has been compiled by the Head of Operations at Lamboo Resources Ltd, Mr. Anthony (Tony) Cormack who is a Member of the Australasian Institute of Mining and Metallurgy . He has sufficient experience that is relevant to the types of deposits being explored for and qualifies as a Competent Person as defined by the JORC Code 2012. He consents to the inclusion of this information in the form and context in which it appears in this report.

The information relating to the Mineral Resources at the McIntosh Project is extracted from the ASX Announcement as follows:

- ASX Announcement titled ‘Significant Flake Graphite JORC Resource Increase at McIntosh Target 1’ dated 20 January 2014
- ASX Announcement titled ‘Significant Bulk Sample Results at McIntosh’ dated 29 September 2014
- ASX Announcement titled ‘Huge Potential at McIntosh Confirmed by VTEM & 3D Interpretation’ dated 8 December 2014
- ASX Announcement titled ‘McIntosh Project-Target 3 VTEM Results & Target 4 Update’ dated 15 December 2014
- ASX Announcement titled ‘Strategic Presentation to AGM’ dated 19 December 2014
- ASX Announcement titled ‘McIntosh – Significant Flake Graphite Potential at Target 10’ dated 19 January 2015
- ASX Announcement titled ‘McIntosh – Significant Cu/Ni Potential at Target 4’ dated 27 January 2015
- ASX Announcement titled ‘Strong Flake Graphite Potential at Target 11 – 3D VTEM’ dated 9 February 2015
- ASX Announcement titled ‘Significant Added Potential Demonstrated’ dated 23 February 2015

Competent Persons Statements – South Korea

Information in this “Company Presentation” relating to Exploration Results and geological data at the South Korean Projects has been compiled by Mr. Christopher Sennitt who is a consultant geologist to Lamboo Resources Ltd, Mr. Senate who is a Fellow of the Australasian Institute of Geoscientists . He has sufficient experience that is relevant to the types of deposits being explored for and qualifies as a Competent Person as defined by the JORC Code 2012. He consents to the inclusion of this information in the form and context in which it appears in this report.

The information relating to Inferred Mineral Resources, Exploration Targets and Exploration Data associated with the Company’s projects in South Korea is extracted from the ASX Announcements as follows:

- ASX announcement titled ‘Two Additional Mining Rights Granted over the South Korean - Geumam Graphite Project’ dated 13 June 2013
- ASX Announcement titled ‘Quarterly Activities Report dated 31 July 2013’
- ASX Announcement titled ‘Maiden Independent Resource Estimate – Area B Prospect South Korean - Geumam Flake Graphite Project’ dated 4 August 2014

The reports are available to view on the Lamboo Resources website www.lambooresources.com. The reports were issued in accordance with the 2012 Edition of the JORC Australasian Code for Reporting of Exploration Results, Mineral Resources and Ore Reserves. The company confirms that it is not aware of any new information or data that materially affects the information included in the original market announcement and, in the case of estimates of Mineral Resources or Ore Reserves, that all material assumptions and technical parameters underpinning the estimates in the relevant market announcement continue to apply and have not materially changed. The company confirms that the form and context in which the Competent Person’s findings are presented have not been materially modified from the original market announcement.