



LAMBOO
RESOURCES

... developing high purity flake for new technologies

AGM Presentation

December 2014



LAMBOO
RESOURCES

. . . developing high purity flake for new technologies

Investment in Lamboo Resources Limited ("Lamboo") is subject to investment risk, including possible loss of income and capital invested. Neither Lamboo, nor any other member company of the Lamboo Group, nor any officer or employee guarantees any particular rate of return or performance, nor do they guarantee the repayment of capital.

The presentation may contain forward-looking statements regarding the potential of the Company's revenues, projects, interests and the development potential of the Company's business. Any statement describing a goal, expectation, intention or belief of the Company is a forward-looking statement and should be considered an at-risk statement. Given these risks, readers are cautioned not to rely on forward-looking statements. Actual results could differ materially from those anticipated in these forward-looking statements due to many important factors, risks and uncertainties including, without limitation, risk associated with product sales, development and manufacture, risks inherent in the business, future capital needs, general economic uncertainty and other risks detailed from time to time in the Company's announcements to the ASX.

SUMMARY



MARKET LED model



LOGISTICS for market access **SUPERB**



NICHE TECH markets not driven by price sensitivity but function

CORPORATE SNAPSHOT

Directors

Neville Miles – Non-Executive Chairman

- COO Invicara.
- Formerly Senior Manager at Siemens

Richard Trevillion – Managing Director

- Formerly a director at CloseBrothers (M&A/ECM/Corporate Finance), London
- Formerly a solicitor at Simmons & Simmons, London
- Founder with considerable ASX experience

Alvars Lee – Non-Executive Director

- Former Investment Banker with Schroders and Daiwa
- Specialist in Asian Capital markets

Tony Cormack – Executive Director

- Head of Operations
- Formerly Resource Development Manager at Atlas Iron Ltd

GRAPHITE FACTS

Types of Graphite



LUMP



AMORPHOUS



FLAKE



Low purity flake graphite **cannot be used** in the production of most **new technologies**

2.



HIGH PURITY
CRYSTAL
FLAKE
GRAPHITE

HIGH PURITY FLAKE GRAPHITE IS IN VERY **LIMITED** SUPPLY

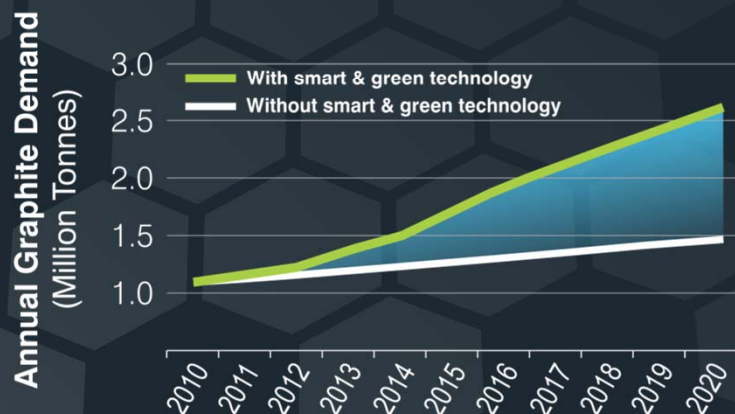
LAMBOO'S GRAPHITE CONFIRMED AS **HIGH PURITY FLAKE**

ONLY HIGH PURITY FLAKE CAN BE USED IN THE PRODUCTION OF THESE **NEW TECHNOLOGIES**

GRAPHITE MARKET

GRAPHITE DEMAND A
\$12 BILLION
MARKET

GLOBAL GRAPHITE DEMAND

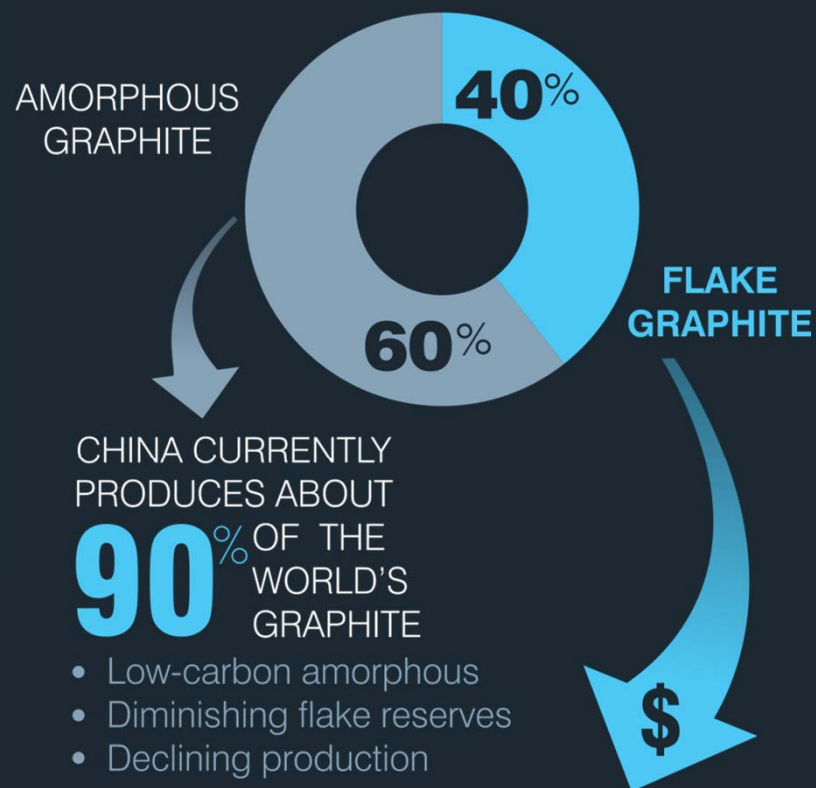


DEMAND FOR
FLAKE GRAPHITE
TO INCREASE BY

11%
pa

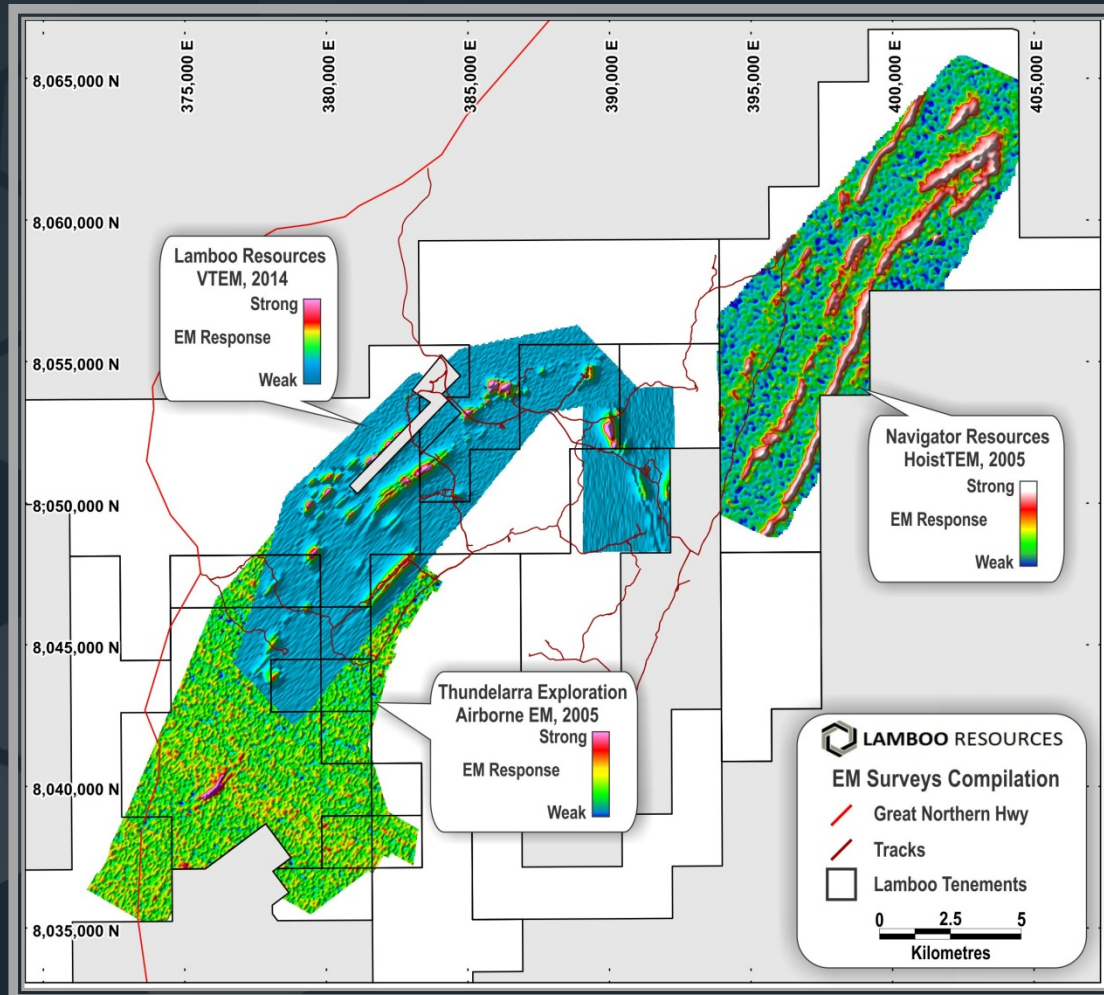
DRIVEN BY
SMART & GREEN
TECHNOLOGY

SUPPLY



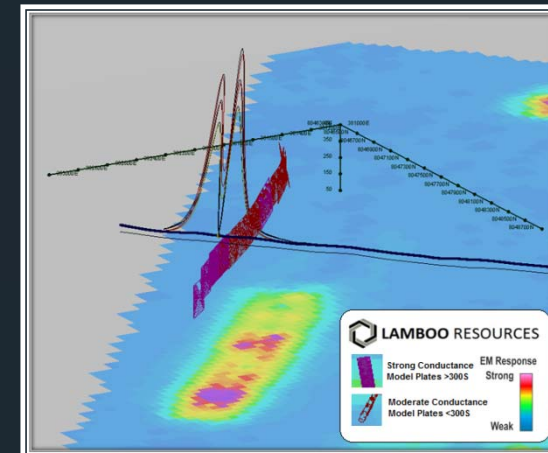
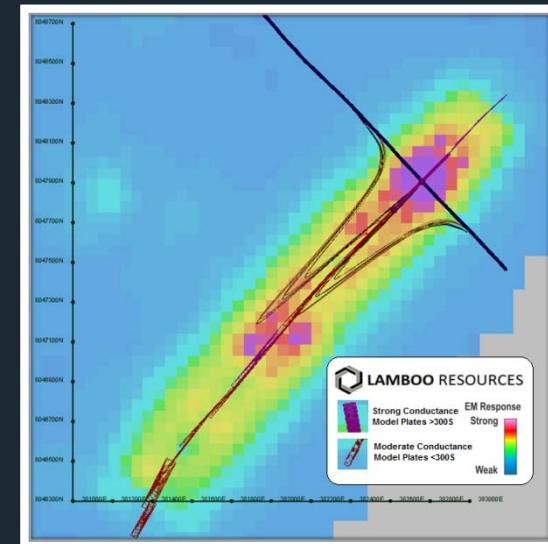
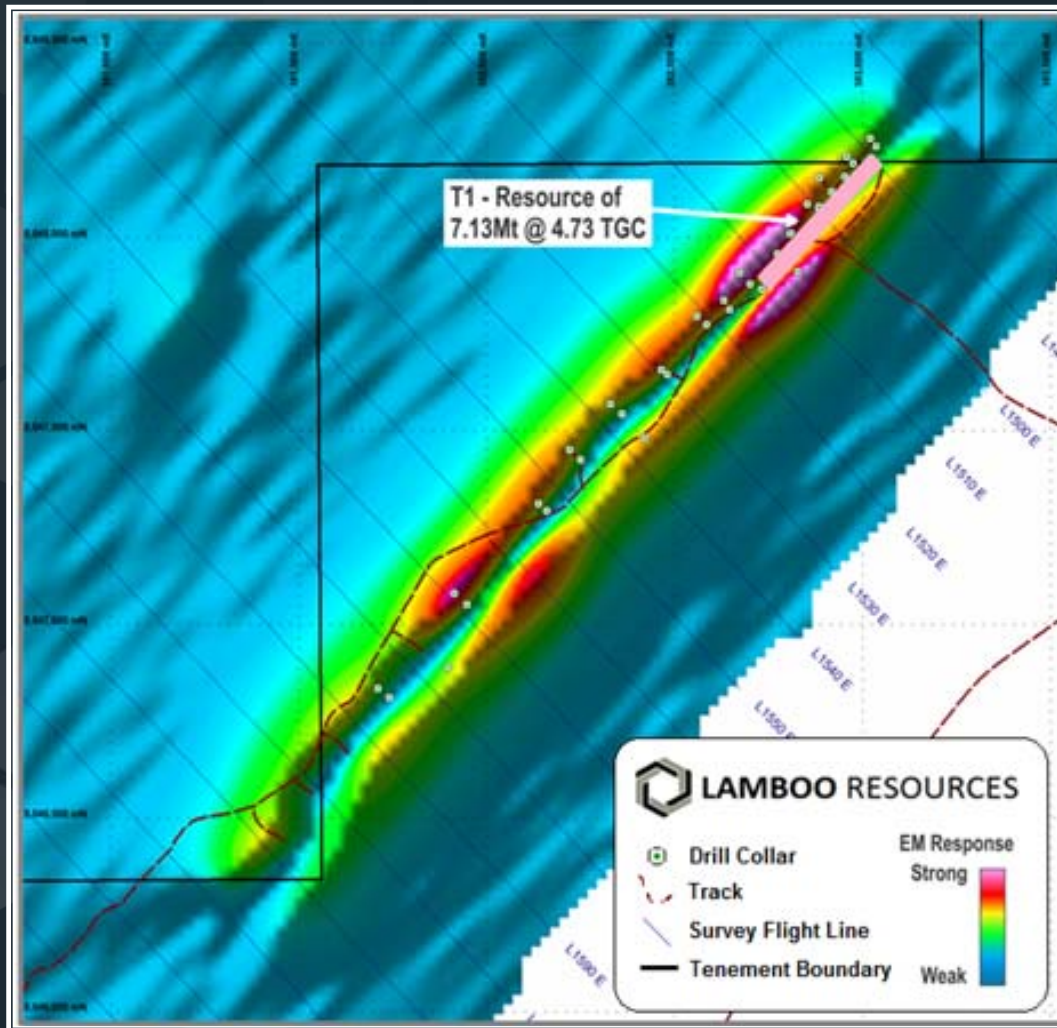
LOWEST SUPPLY
HIGHEST PRICE

McINTOSH FLAKE GRAPHITE PROJECT

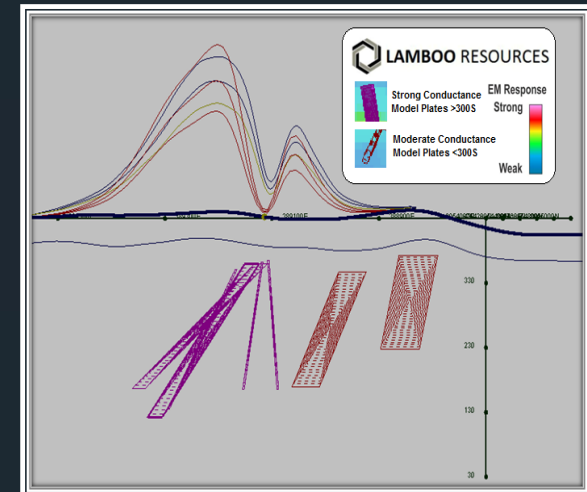
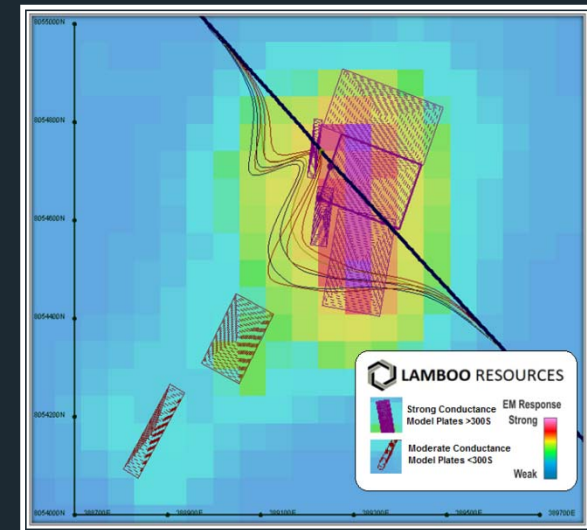
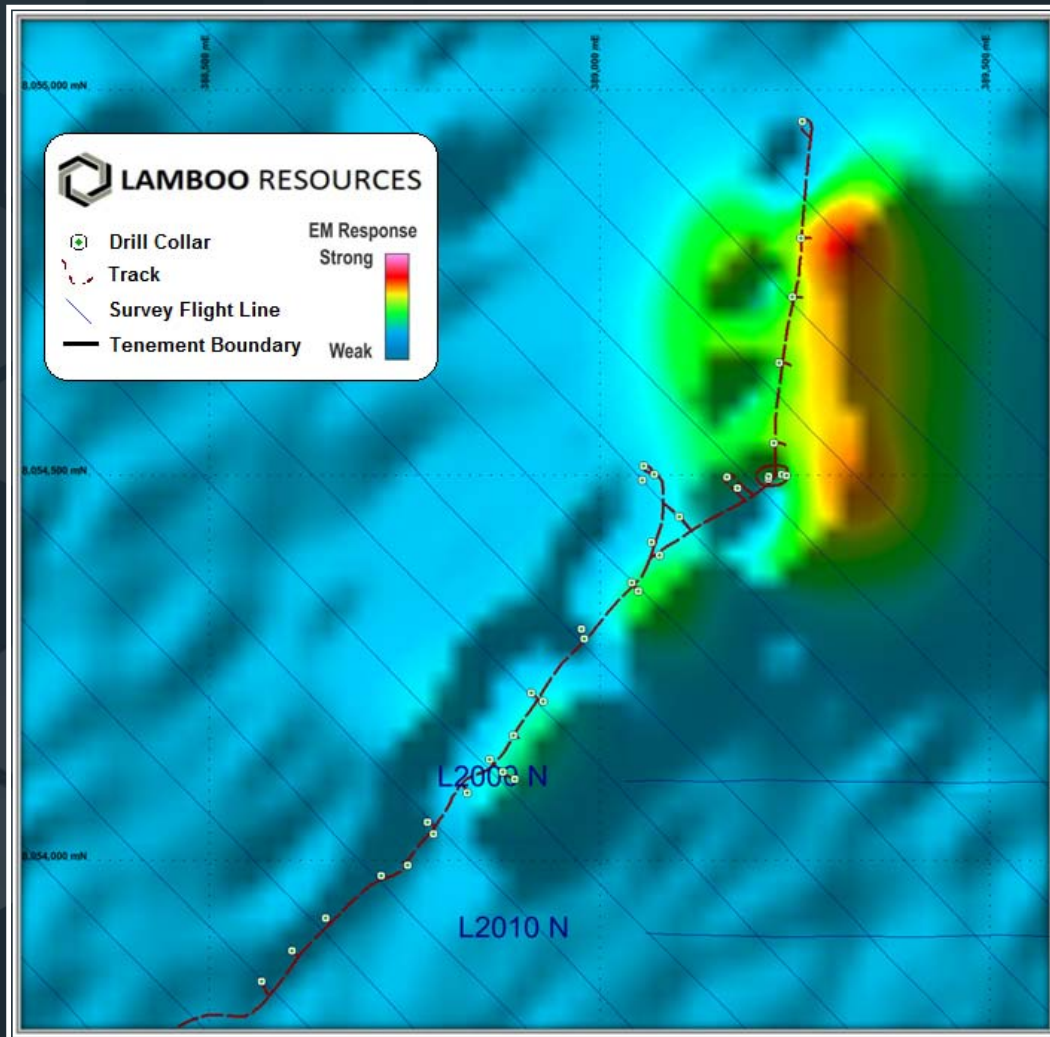


- **Additional EM anomalies at the Black Rock and Panton projects indicate an additional 35 km of strong EM anomalies.**
- **Total strike length potential for flake graphite now in the range of 30 to 50 km.**

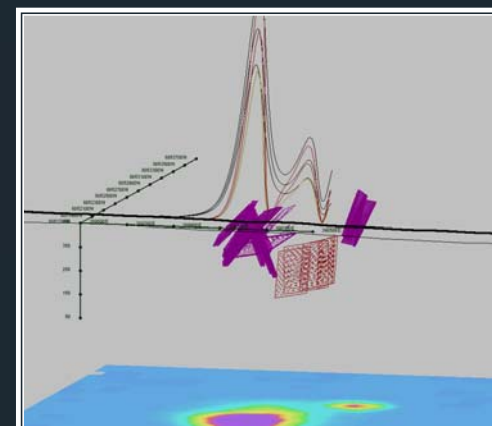
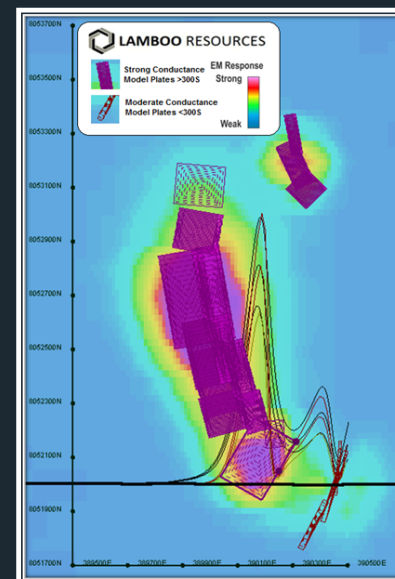
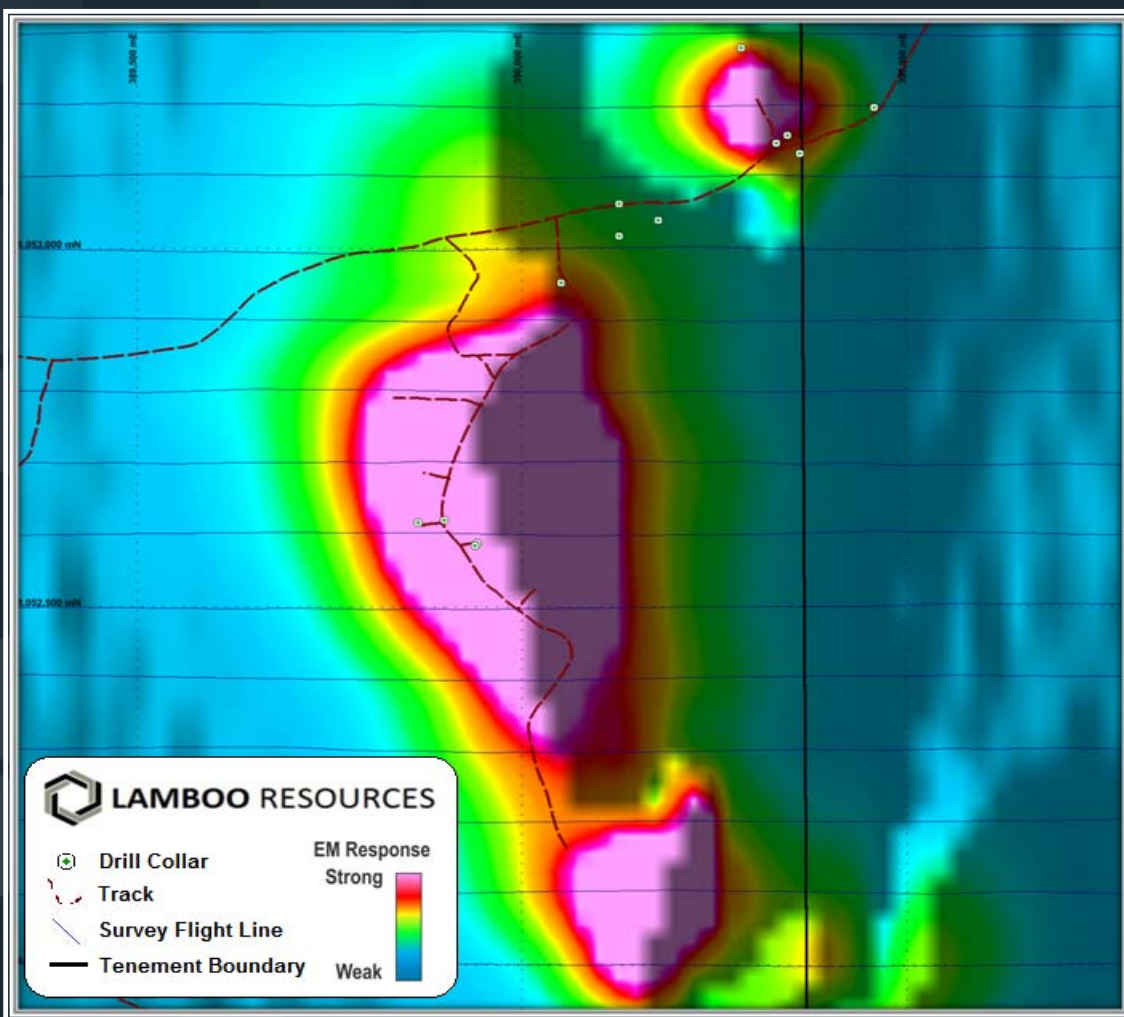
TARGET 1



TARGET 5



TARGET 6



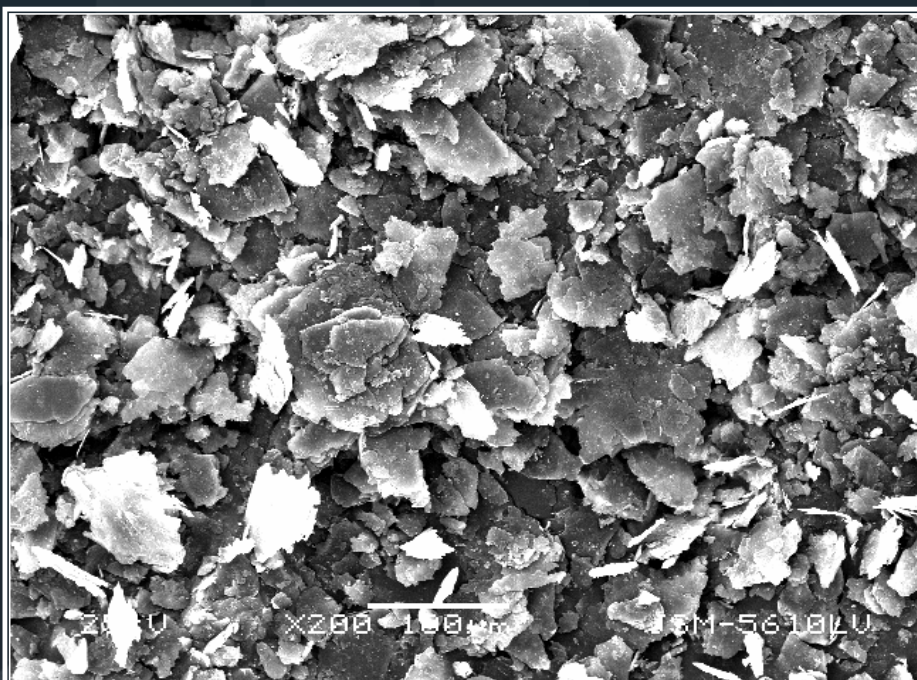
McINTOSH METALLURGY

Target	MGA East	MGA North	Graphite % Observed	Mean Flake Size (µm)	Max Flake Size (µm)
Target 1	382773	8047837	7	50	100
Target 1	382802	8047959	10	50	100
Target 1	382732	8047866	5	20	120
Target 2	384355	8050299	6	80	120
Target 1	383022	8048378	6	50	150
Target 2	384531	8050154	8	50	150
Target 5	388859	8054205	6	120	150
Target 5	388821	8054156	4.5	90	180
Target 5	389065	8054471	13	90	200
Target 2	384473	8050319	3	100	200
Target 2	384476	8050210	4	100	200
Target 2	384681	8050475	5	100	220
Target 5	388764	8054063	20	120	220
Target 5	389022	8054365	10	90	250
Target 5	389216	8054677	10	90	250
Target 5	389064	8054480	30	100	250
Target 5	388834	8054146	10	165	250
Target 5	390398	8053072	3	120	300
Target 6	390438	8053173	12	165	300
Target 5	388847	8054140	9	135	500

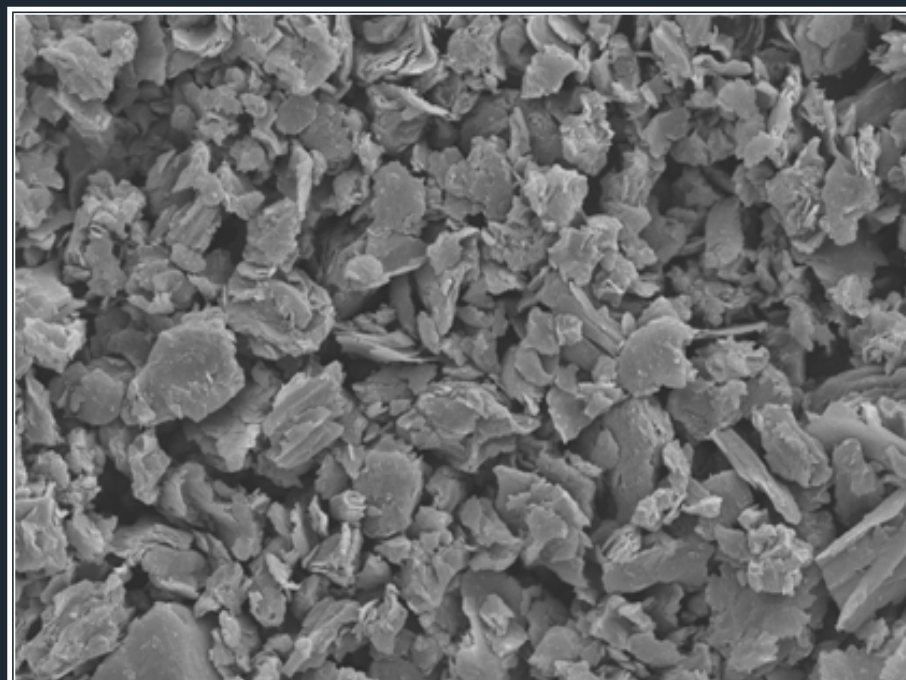
Particle Size (µm)	Flake Category
+425	
- 425 + 300	Extra Large (Jumbo)
- 300 + 150	Large
- 150 + 75	Medium

McINTOSH METALLURGY

Scanning Electron Microscopy McIntosh Flake v Market Leaders Flake



**McIntosh Flake Graphite
Concentrate - Target 6
(90.5% TGC)**



**Competitors Synthetic Flake Graphite
Concentrate currently being used in
Li-ion batteries
(90.1% TGC)**

AUSTRALIAN INFRASTRUCTURE



- The Port of Wyndham is the only deep water port between Broome and Darwin and lies just 280km from the McIntosh Project via the Great Northern Highway and has available capacity.



NEXT STEPS

VTEM INTERPRETATION RESULTS

- Target 1, 5 and 6 complete, with the remaining results expected in the coming weeks. The VTEM data / interpretation will be used to estimate an exploration target for the project area as well as prioritise future targeted drilling.

SCOPING STUDY

- Work is continuing towards a revised scoping study.

TENEMENTS / MINING LEASE APPLICATION

- All project tenements have now granted by the Dept. of Mines and Petroleum allowing the application for mining lease to commence.

NATIVE TITLE

- Positive relationship with the traditional owner group, the Marlarngowem. Positive outcomes for both parties are expected.

ENVIRONMENTAL

- Environmental surveys and monitoring have not identified any significant issues to date.

* Subject to funding

SOUTH KOREA ASSETS



Geumam

- Initial Indicated / Inferred JORC compliant resource of 5.5Mt @ 5.4% Cg for 296,000t contained graphite
- Diamond drilling has returned thick intersections expected to add significantly to a resource upgrade
- Close proximity to major customers within South Korea

Taewha

- Initial Inferred JORC compliant resource of 170,000 tonnes @ 6.8% Cg

Samchoek

- Initial Inferred JORC compliant resource of 200,000 tonnes @ 4.8% Cg

KOREA INFRASTRUCTURE

- 15 minutes to the Port of Dangjin
- One of the largest global industrial zones



LAMBOO'S PARTNERS

- **LMB** is one of small number of global graphite juniors with more than 1 commercial deal ie CRR and CSH: a number that's likely to increase
- **CSH** is a leading processor of flake graphite and already processed LMB's flake
- **Supply arrangements** 50,000 tonnes per annum at market contract prices for high purity tech quality flake with price to be no less than \$2,000 per tonne
- **China Rail (CRR)** Fortune 50 company seeking supply of flake and processed materials for renewable energy markets
- **Supply arrangements** 50,000 tonnes per annum at market contract prices

CONCLUSION



NICHE high value combination



POSITIONED to meet the explosive market demands
of the LITHIUM ION BATTERY and renewable energy
markets



... developing high purity flake for new technologies

Competent Persons Statements – Western Australia

Information in this “Company Presentation” relating to Exploration Results and geological data at the McIntosh Project has been compiled by the Head of Operations at Lamboo Resources Ltd, Mr. Anthony (Tony) Cormack who is a Member of the Australasian Institute of Mining and Metallurgy . He has sufficient experience that is relevant to the types of deposits being explored for and qualifies as a Competent Person as defined by the JORC Code 2012. He consents to the inclusion of this information in the form and context in which it appears in this report.

The information relating to the Mineral Resources at the McIntosh Project is extracted from the ASX Announcement as follows:

- ASX Announcement titled ‘Significant Flake Graphite JORC Resource Increase at McIntosh Target 1’ dated 20 January 2014
- ASX Announcement titled ‘Significant Bulk Sample Results at McIntosh’ dated 29 September 2014
- ASX Announcement titled ‘Huge Potential at McIntosh Confirmed by VTEM & 3D Interpretation’ dated 8 December 2014
- ASX Announcement titled ‘McIntosh Project-Target 3 VTEM Results & Target 4 Update’ dated 15 December 2014

Competent Persons Statements – South Korea

Information in this “Company Presentation” relating to Exploration Results and geological data at the South Korean Projects has been compiled by Mr. Christopher Sennitt who is a consultant geologist to Lamboo Resources Ltd, Mr. Senate who is a Fellow of the Australasian Institute of Geoscientists . He has sufficient experience that is relevant to the types of deposits being explored for and qualifies as a Competent Person as defined by the JORC Code 2012. He consents to the inclusion of this information in the form and context in which it appears in this report.

The information relating to Inferred Mineral Resources, Exploration Targets and Exploration Data associated with the Company's projects in South Korea is extracted from the ASX Announcements as follows:

- ASX announcement titled ‘Two Additional Mining Rights Granted over the South Korean - Geumam Graphite Project’ dated 13 June 2013
- ASX Announcement titled ‘Quarterly Activities Report dated 31 July 2013’
- ASX Announcement titled ‘Maiden Independent Resource Estimate – Area B Prospect South Korean - Geumam Flake Graphite Project’ dated 4 August 2014

The reports are available to view on the Lamboo Resources website www.lambooresources.com. The reports were issued in accordance with the 2012 Edition of the JORC Australasian Code for Reporting of Exploration Results, Mineral Resources and Ore Reserves. The company confirms that it is not aware of any new information or data that materially affects the information included in the original market announcement and, in the case of estimates of Mineral Resources or Ore Reserves, that all material assumptions and technical parameters underpinning the estimates in the relevant market announcement continue to apply and have not materially changed. The company confirms that the form and context in which the Competent Person's findings are presented have not been materially modified from the original market announcement.